

STATUTORY RIGHT OF WAY PLAN OVER PART OF BLOCK M, DISTRICT LOT 343, CARIBOO DISTRICT, PLAN 1268.

PLAN EPP56275

PURSUANT TO SECTION 113 OF THE LAND TITLE ACT.

BCGS 93G.097

INTEGRATED SURVEY AREA No. 39, PRINCE GEORGE, NAD83 (CSRS)

THE INTENDED PLOT SIZE OF THIS PLAN IS 560mm IN WIDTH BY 432mm IN HEIGHT (C SIZE) WHEN PLOTTED AT A SCALE OF 1:750



ALL DISTANCES ARE HORIZONTAL GROUND-LEVEL AND ARE SHOWN IN METRES AND DECIMALS THEREOF, UNLESS OTHERWISE INDICATED.

GRID BEARINGS ARE DERIVED FROM OBSERVATIONS BETWEEN GEODETIC CONTROL MONUMENTS 85H1289 AND 79H8443.

THIS PLAN SHOWS HORIZONTAL GROUND-LEVEL DISTANCES, UNLESS OTHERWISE SPECIFIED. TO COMPUTE GRID DISTANCES, MULTIPLY GROUND-LEVEL DISTANCES BY THE AVERAGE COMBINED FACTOR OF 0.9995154 WHICH HAS BEEN DERIVED FROM GEODETIC CONTROL MONUMENTS 85H1289 AND 79H8443.

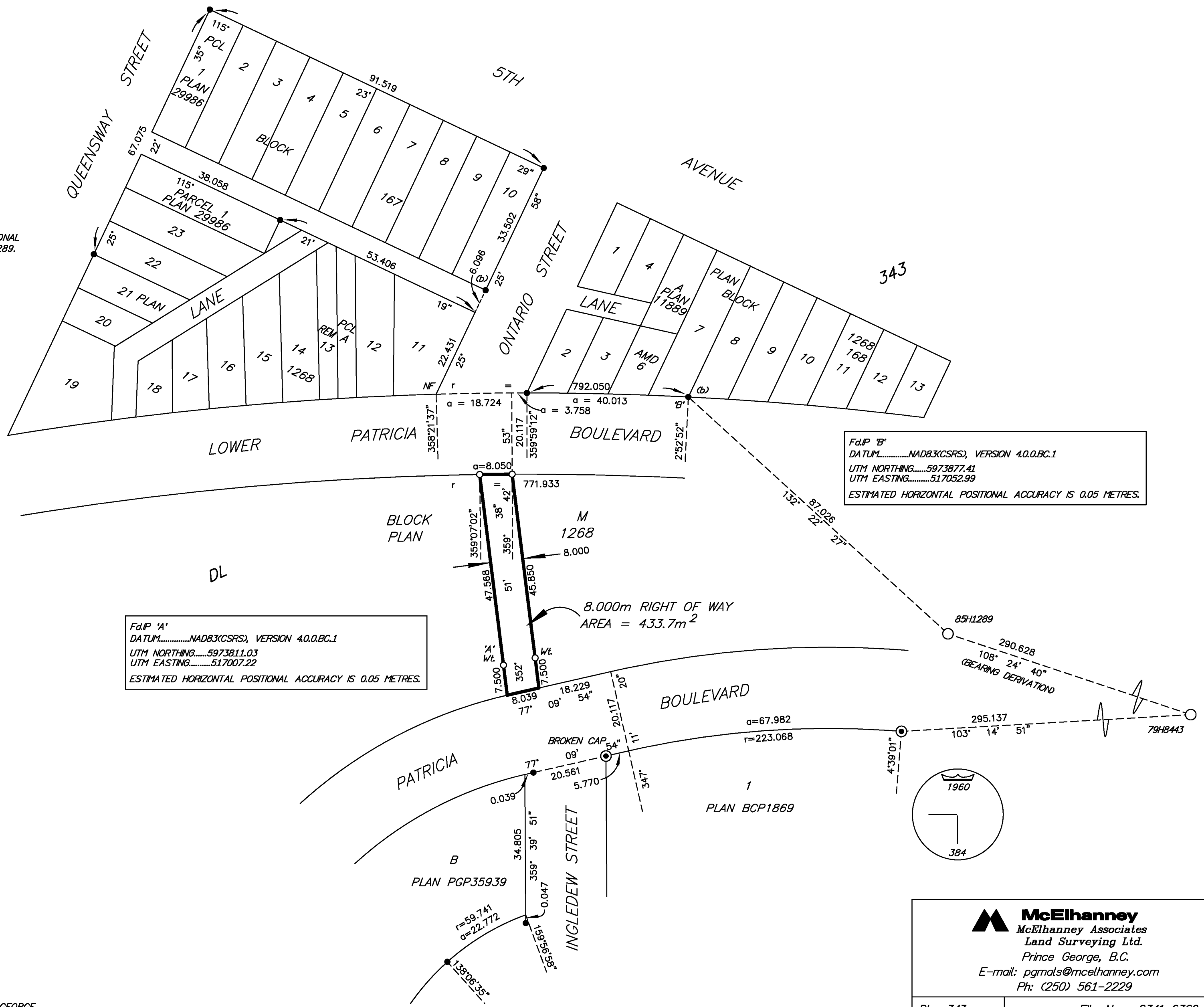
THE UTM COORDINATES AND ESTIMATED NETWORK HORIZONTAL POSITIONAL ACCURACY ACHIEVED ARE DERIVED FROM CONTROL MONUMENT 85H1289.

LEGEND

- ⊙ STANDARD CONCRETE POST FOUND
- STANDARD IRON POST FOUND
- STANDARD IRON POST PLACED
- ⊙ CONTROL MONUMENT FOUND

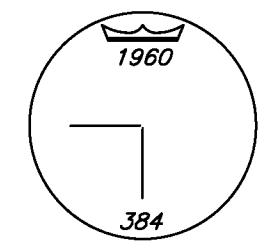
SOME SYMBOLS AND LINES HAVE BEEN EXAGGERATED FOR CLARITY

NOTE: THIS PLAN SHOWS ONE OR MORE WITNESS POSTS WHICH ARE NOT SET ON THE TRUE CORNER(S).



Fd.P 'B'
DATUM.....NAD83(CSRS), VERSION 4.0.0.BC.1
UTM NORTHING.....5973877.41
UTM EASTING.....517052.99
ESTIMATED HORIZONTAL POSITIONAL ACCURACY IS 0.05 METRES.

Fd.P 'A'
DATUM.....NAD83(CSRS), VERSION 4.0.0.BC.1
UTM NORTHING.....5973811.03
UTM EASTING.....517007.22
ESTIMATED HORIZONTAL POSITIONAL ACCURACY IS 0.05 METRES.



THE FIELD SURVEY REPRESENTED BY THIS PLAN WAS COMPLETED ON THE 22nd DAY OF OCTOBER, 2015. SHAUNA GOERTZEN, BCLS 798

THIS PLAN LIES WITHIN THE REGIONAL DISTRICT OF FRASER - FORT GEORGE.

McElhanney
McElhanney Associates
Land Surveying Ltd.
Prince George, B.C.
E-mail: pgmals@mcElhanney.com
Ph: (250) 561-2229

DL - 343 File No. 2341-6369-PP