

REFERENCE PLAN OF ROAD DEDICATION OVER PART OF BLOCK A, DISTRICT LOT 6882, CARIBOO DISTRICT

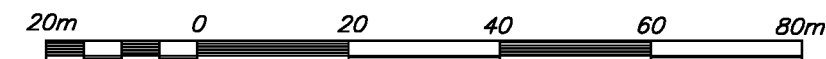
PLAN EPP55891

PURSUANT TO SECTION 107 OF THE LAND TITLE ACT.

BCGS 93G.096

INTEGRATED SURVEY AREA No. 39, PRINCE GEORGE, NAD83 (CSRS)

THE INTENDED PLOT SIZE OF THIS PLAN IS 560mm IN WIDTH BY 432mm IN HEIGHT (C SIZE) WHEN PLOTTED AT A SCALE OF 1:1000



ALL DISTANCES ARE HORIZONTAL GROUND-LEVEL AND ARE SHOWN IN METRES AND DECIMALS THEREOF, UNLESS OTHERWISE INDICATED.

GRID BEARINGS ARE DERIVED FROM GNSS OBSERVATIONS AND ARE REFERRED TO THE CENTRAL MERIDIAN OF UTM ZONE 10. TO OBTAIN LOCAL ASTRONOMIC BEARINGS REFERRED TO THE MERIDIAN THROUGH Fd.I.P 'A', ADD 0° 07' 32".

THIS PLAN SHOWS HORIZONTAL GROUND-LEVEL DISTANCES, UNLESS OTHERWISE SPECIFIED. TO COMPUTE GRID DISTANCES, MULTIPLY GROUND-LEVEL DISTANCES BY THE AVERAGE COMBINED FACTOR OF 0.9994857. THE COMBINED FACTOR HAS BEEN DETERMINED BASED ON AN AVERAGE ELLIPSOIDAL ELEVATION OF 736.5 METRES.

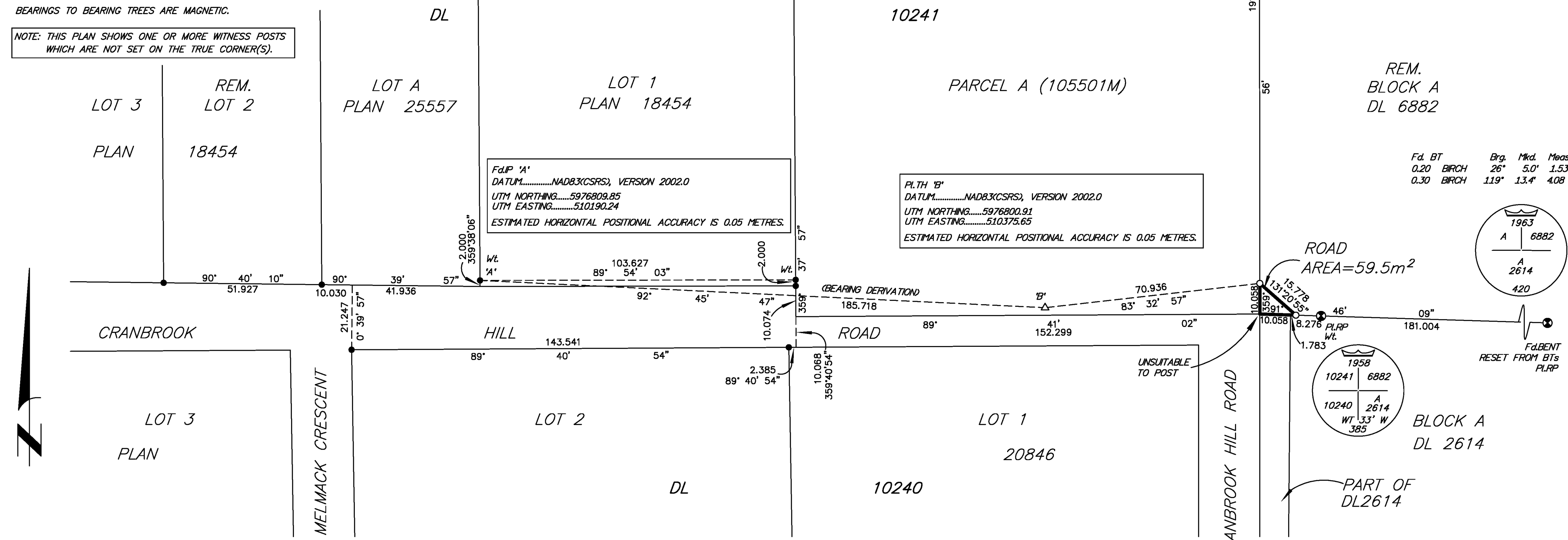
THE UTM COORDINATES AND ESTIMATED NETWORK HORIZONTAL POSITIONAL ACCURACY ACHIEVED ARE DERIVED FROM DUAL FREQUENCY GNSS OBSERVATIONS USING PRECISE POINT POSITIONING SERVICES OF NATURAL RESOURCES CANADA.

LEGEND

- ⊙ STANDARD CAPPED POST FOUND
- STANDARD IRON POST FOUND
- STANDARD IRON POST PLACED
- △ TRAVERSE HUB PLACED

BEARINGS TO BEARING TREES ARE MAGNETIC.

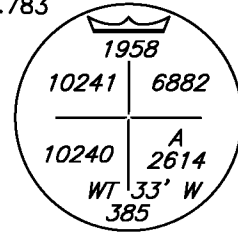
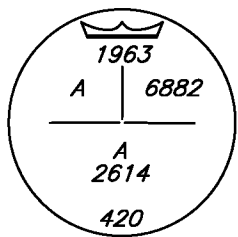
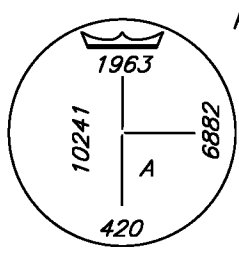
NOTE: THIS PLAN SHOWS ONE OR MORE WITNESS POSTS WHICH ARE NOT SET ON THE TRUE CORNER(S).



Fd.I.P 'A'
 DATUM.....NAD83(CSRS), VERSION 2002.0
 UTM NORTHING.....5976809.85
 UTM EASTING.....510190.24
 ESTIMATED HORIZONTAL POSITIONAL ACCURACY IS 0.05 METRES.

PLTH 'B'
 DATUM.....NAD83(CSRS), VERSION 2002.0
 UTM NORTHING.....5976800.91
 UTM EASTING.....510375.65
 ESTIMATED HORIZONTAL POSITIONAL ACCURACY IS 0.05 METRES.

Fd. BT	Brg.	Mkd.	Meas
0.20	BIRCH	26°	5.0' 1.53
0.30	BIRCH	119°	13.4' 4.08



THIS PLAN LIES WITHIN THE JURISDICTION OF THE CITY OF PRINCE GEORGE
 APPROVING OFFICER

THE FIELD SURVEY REPRESENTED BY THIS PLAN
 WAS COMPLETED ON THE 21st DAY OF SEPTEMBER, 2015.
 SHAUNA GOERTZEN, BCLS 798

THIS PLAN LIES WITHIN THE REGIONAL DISTRICT OF FRASER - FORT GEORGE.

McElhanney
 McElhanney Associates
 Land Surveying Ltd.
 Prince George, B.C.
 E-mail: pgmats@mcElhanney.com
 Ph: (250) 561-2229

DL - 6882 File No. 2342-6263