

# STATUTORY RIGHT OF WAY PLAN OVER PART OF NORTH EAST 1/4 DISTRICT LOT 750, CARIBOO DISTRICT, EXCEPT PLANS 15470, 16630, 18608, 18991, 20076, 23849, PGP36675 AND PGP42228.

PLAN EPP55657

PURSUANT TO SECTION 113 OF THE LAND TITLE ACT.

BCGS 93G.087

INTEGRATED SURVEY AREA No. 39, PRINCE GEORGE, NAD83 (CSRS)

THE INTENDED PLOT SIZE OF THIS PLAN IS 560mm IN WIDTH BY  
432mm IN HEIGHT (C SIZE) WHEN PLOTTED AT A SCALE OF 1:1000



ALL DISTANCES ARE HORIZONTAL GROUND-LEVEL AND ARE SHOWN  
IN METRES AND DECIMALS THEREOF, UNLESS OTHERWISE INDICATED.

GRID BEARINGS ARE DERIVED FROM GNSS OBSERVATIONS BETWEEN  
GEODETIC CONTROL MONUMENTS 86H1724 AND 86H1758.

THIS PLAN SHOWS HORIZONTAL GROUND-LEVEL DISTANCES, UNLESS  
OTHERWISE SPECIFIED. TO COMPUTE GRID DISTANCES, MULTIPLY  
GROUND-LEVEL DISTANCES BY THE AVERAGE COMBINED FACTOR OF  
0.9995132 WHICH HAS BEEN DERIVED FROM 86H1724 AND 86H1758.

THE UTM COORDINATES AND ESTIMATED NETWORK HORIZONTAL POSITIONAL  
ACCURACY ACHIEVED ARE DERIVED FROM CONTROL MONUMENT 86H1758.

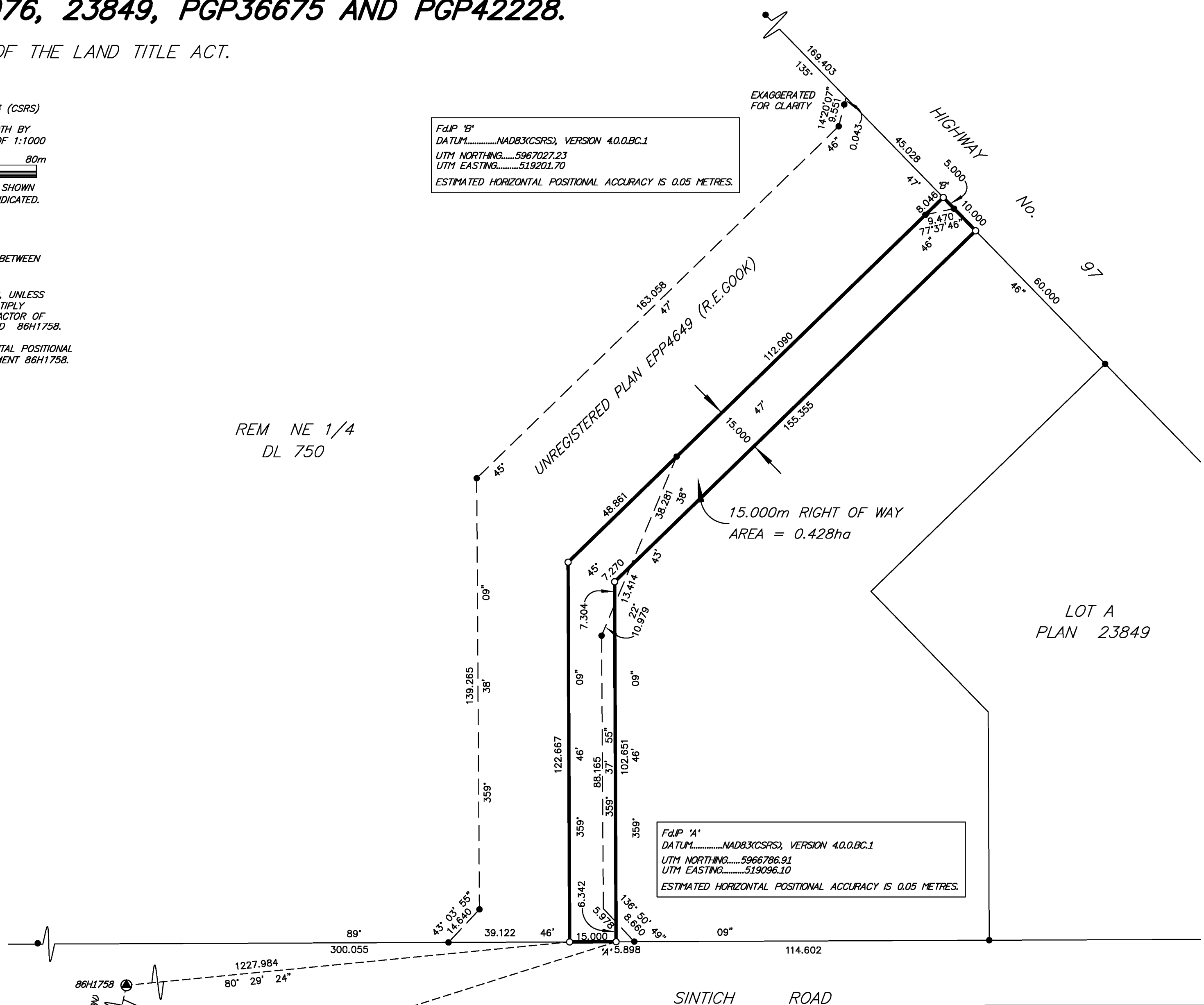
**LEGEND**

- STANDARD IRON POST FOUND
- STANDARD IRON POST PLACED
- ⊙ CONTROL MONUMENT FOUND

REM NE 1/4  
DL 750

FdIP 'B'  
DATUM.....NAD83(CSRS), VERSION 4.0.0.BC.1  
UTM NORTHING.....5967027.23  
UTM EASTING.....519201.70  
ESTIMATED HORIZONTAL POSITIONAL ACCURACY IS 0.05 METRES.

FdIP 'A'  
DATUM.....NAD83(CSRS), VERSION 4.0.0.BC.1  
UTM NORTHING.....5966786.91  
UTM EASTING.....519096.10  
ESTIMATED HORIZONTAL POSITIONAL ACCURACY IS 0.05 METRES.



THE FIELD SURVEY REPRESENTED BY THIS PLAN  
WAS COMPLETED ON THE 31st DAY OF AUGUST, 2015.  
SHAUNA GOERTZEN, BCLS 798

THIS PLAN LIES WITHIN THE REGIONAL DISTRICT OF FRASER - FORT GEORGE.

**McElhanney**  
McElhanney Associates  
Land Surveying Ltd.  
Prince George, B.C.  
E-mail: pgmats@mcelhanney.com  
Ph: (250) 561-2229

DL - 750      File No. 2341-6351-RW