

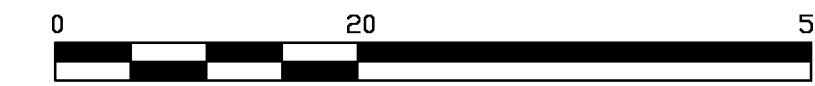
# SUBDIVISION PLAN OF PART OF LOT 28, DISTRICT LOT 1433 CARIBOO DISTRICT, PLAN EPP42273

PLAN EPP55599

PURSUANT TO SECTION 67 OF THE LAND TITLE ACT

BCGS 93G.087

INTEGRATED SURVEY AREA No. 39, PRINCE GEORGE, NAD83 (CSRS) ZONE 10



THE INTENDED PLOT SIZE OF THIS PLAN IS 864mm IN WIDTH BY 560mm IN HEIGHT (D SIZE) WHEN PLOTTED AT A SCALE OF 1:500

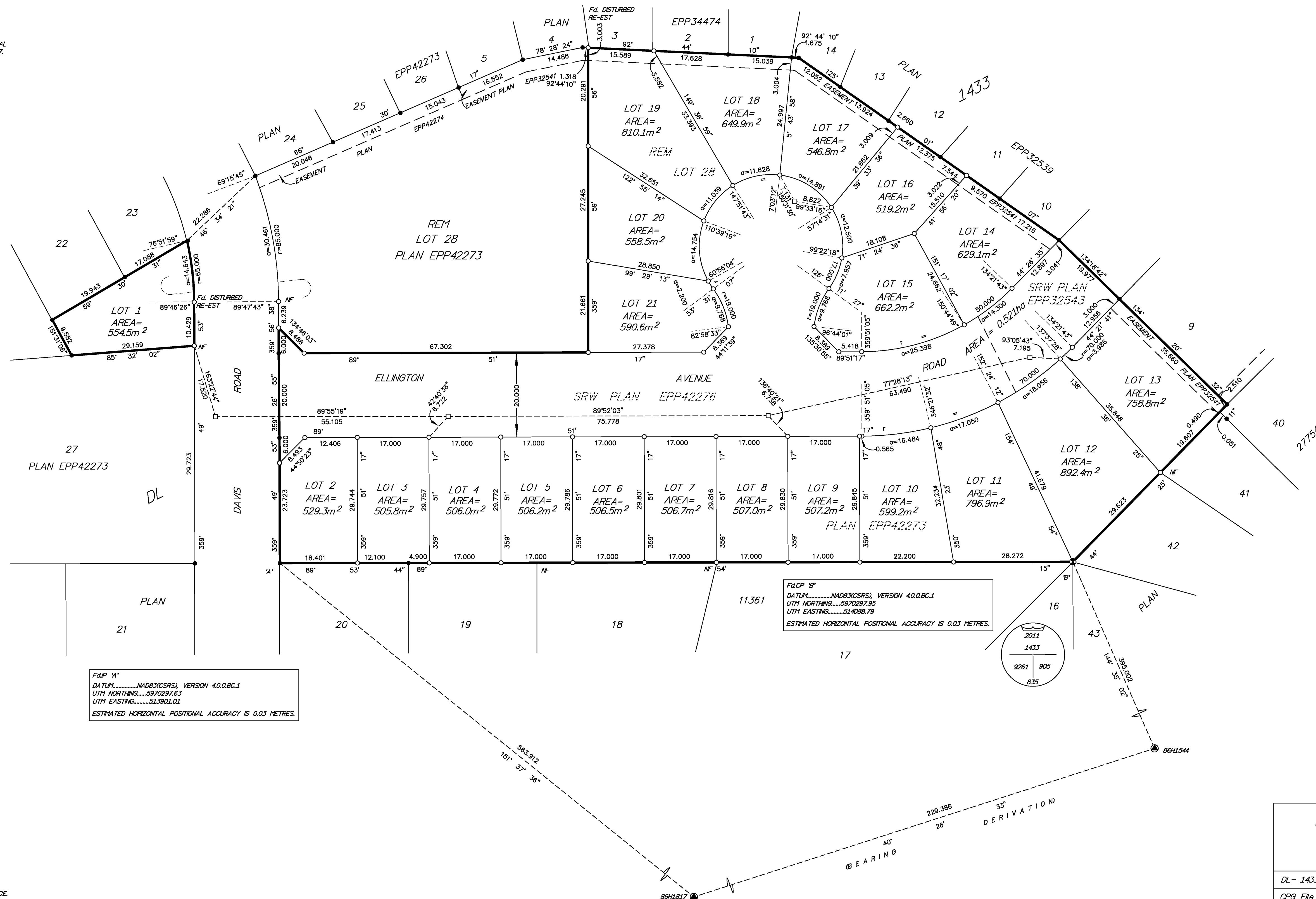
GRID BEARINGS ARE DERIVED FROM GNSS OBSERVATIONS BETWEEN GEODETIC CONTROL MONUMENTS 86H1817 AND 86H1544.

THIS PLAN SHOWS HORIZONTAL GROUND-LEVEL DISTANCES, UNLESS OTHERWISE SPECIFIED. TO COMPUTE GRID DISTANCES, MULTIPLY GROUND-LEVEL DISTANCES BY THE AVERAGE COMBINED FACTOR OF 0.9995032 WHICH HAS BEEN DERIVED FROM GEODETIC CONTROL MONUMENTS 86H1817 AND 86H1544.

THE UTM COORDINATES AND ESTIMATED NETWORK HORIZONTAL POSITIONAL ACCURACY ACHIEVED ARE DERIVED FROM CONTROL MONUMENT 86H1817.

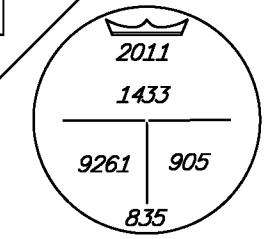
## LEGEND

- STANDARD CAPPED POST FOUND
  - STANDARD IRON POST FOUND
  - STANDARD IRON POST PLACED
  - ⊙ STANDARD LEAD PLUG PLACED
  - ⊙ CONTROL MONUMENT FOUND
- SOME LINES AND POSTS MAY BE EXAGGERATED FOR CLARITY



FILE 'A'  
 DATUM.....NAD83(CSRS), VERSION 4.0.0.BC.1  
 UTM NORTHING.....5970297.63  
 UTM EASTING.....513901.01  
 ESTIMATED HORIZONTAL POSITIONAL ACCURACY IS 0.03 METRES.

FILE 'B'  
 DATUM.....NAD83(CSRS), VERSION 4.0.0.BC.1  
 UTM NORTHING.....5970297.95  
 UTM EASTING.....514088.79  
 ESTIMATED HORIZONTAL POSITIONAL ACCURACY IS 0.03 METRES.



THIS PLAN LIES WITHIN THE JURISDICTION OF THE APPROVING OFFICER FOR THE CITY OF PRINCE GEORGE  
 CPG File: SD100470

THE FIELD SURVEY REPRESENTED BY THIS PLAN WAS COMPLETED ON THE 22nd DAY OF OCTOBER, 2015.  
 SHAUNA C. GOERTZEN, BCLS 798

THIS PLAN LIES WITHIN THE REGIONAL DISTRICT OF FRASER - FORT GEORGE.

**McElhanney**  
 McElhanney Associates  
 Land Surveying Ltd.  
 Prince George, B.C.  
 E-mail: pgmats@mcElhanney.com  
 Ph: (250) 561-2229

DL - 1433 File No. 2341-6354-SD  
 CPG File No. SD100470

Filed PG EPP55599 EPP55599-144-674-5098 RCVD:2015-12-21 ROST:2016-01-06 03:09 CITY OF PRINCE GEORGE