

PLAN OF STATUTORY RIGHT OF WAY OVER PART OF LOTS 51 AND 52, DISTRICT LOT 2425, CARIBOO DISTRICT, PLAN EPP55596.

PLAN EPP55598

BCGS 93J.006

Pursuant to Section 113
of the Land Title Act.

Scale: 1 : 750 (Distances are in metres)



INTEGRATED SURVEY AREA No. 39, CITY OF PRINCE GEORGE NAD83(CSRS).

GRID BEARINGS ARE DERIVED FROM PREVIOUSLY INTEGRATED PLAN EPP55596

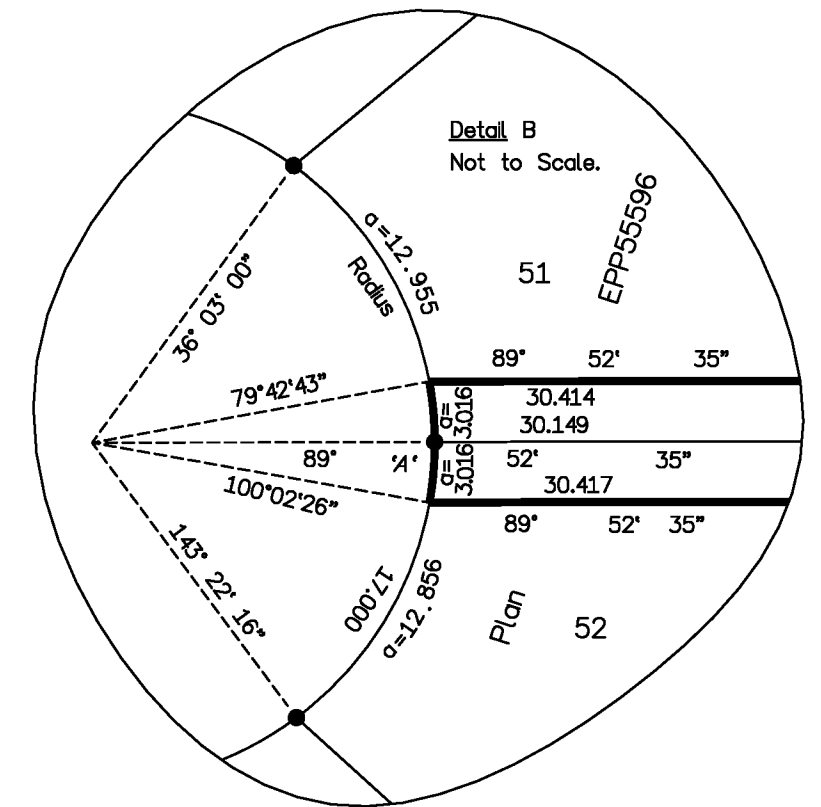
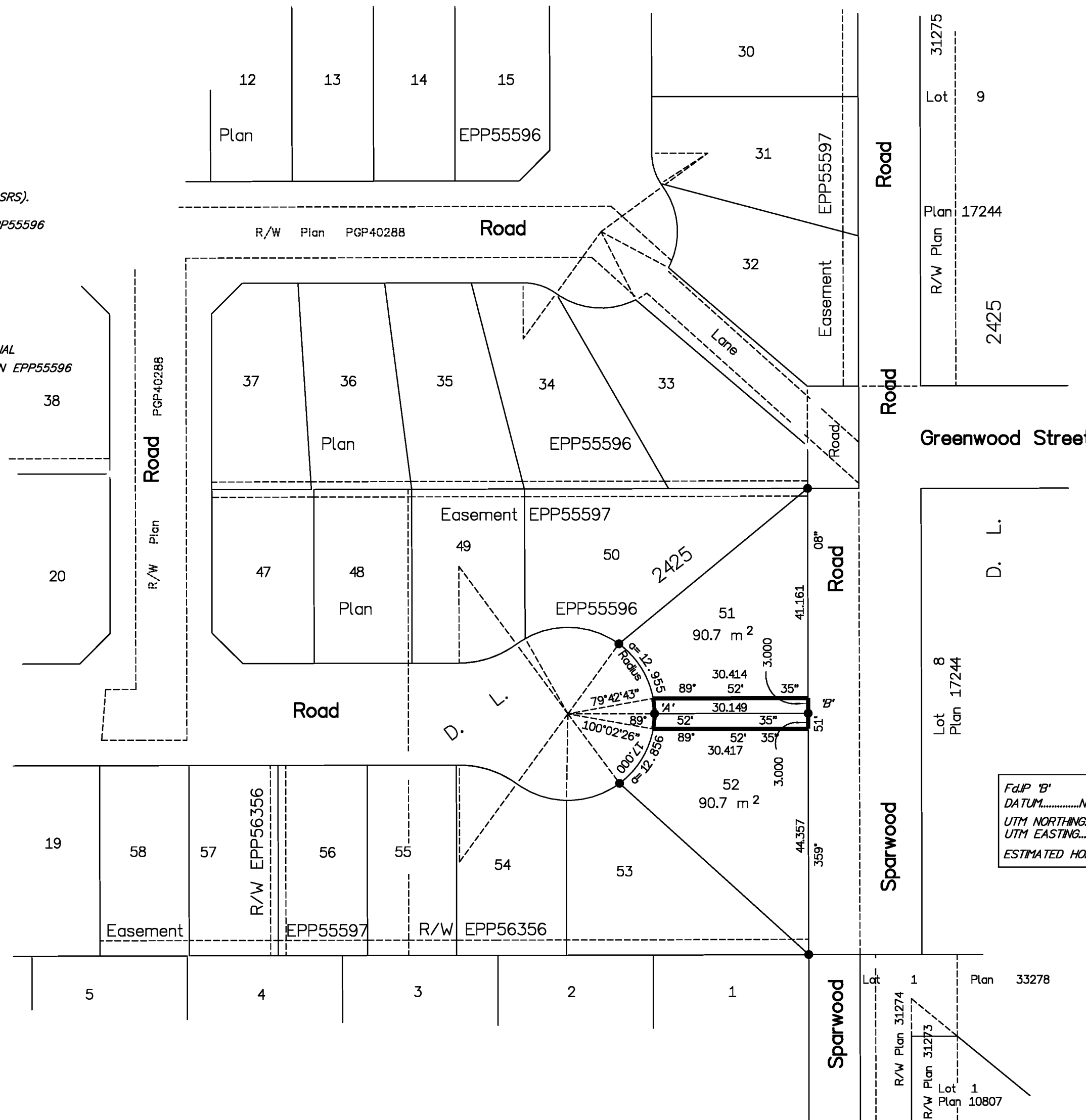
THIS PLAN SHOWS HORIZONTAL GROUND-LEVEL DISTANCES, UNLESS OTHERWISE SPECIFIED. TO COMPUTE GRID DISTANCES, MULTIPLY GROUND-LEVEL DISTANCES BY THE AVERAGE COMBINED FACTOR OF 0.9994835 WHICH HAS BEEN DERIVED FROM 86H1588 AND 86H1610.

THE UTM COORDINATES AND ESTIMATED NETWORK HORIZONTAL POSITIONAL ACCURACY ACHIEVED ARE DERIVED FROM PREVIOUSLY INTEGRATED PLAN EPP55596

LEGEND

● Standard Iron Post Found

FdIP 'A'
DATUM.....NAD83(CSRS), VERSION 4.0.0.BC.1
UTM NORTHING.....5984768.67
UTM EASTING.....512172.20
ESTIMATED HORIZONTAL POSITIONAL ACCURACY IS 0.05 METRES.



FdIP 'B'
DATUM.....NAD83(CSRS), VERSION 4.0.0.BC.1
UTM NORTHING.....5984768.74
UTM EASTING.....512202.33
ESTIMATED HORIZONTAL POSITIONAL ACCURACY IS 0.05 METRES.

BOOK OF REFERENCE	
DESCRIPTION	AREA
Lot 51, Plan EPP55596	90.7 m ²
Lot 52, Plan EPP55596	90.7 m ²

THE FIELD SURVEY REPRESENTED BY THIS PLAN
WAS COMPLETED ON THE 16th DAY OF SEPTEMBER, 2015.
SHAUNA GOERTZEN, BCLS 798

THIS PLAN LIES WITHIN THE REGIONAL DISTRICT OF FRASER - FORT GEORGE.

McElhanney
McElhanney Associates
Land Surveying Ltd.
Prince George, B.C.

E-mail: pgmals@mcElhanney.com
Ph: (250) 561-2229 Fax: (250) 563-1941

DL - 2425 File No. 5264-RW

CPG File No. SD100425