

**SUBDIVISION PLAN OF LOT A, DISTRICT LOT 2425, CARIBOO DISTRICT, PLAN 29255 AND PART OF THE SOUTH WEST 1/4 OF DISTRICT LOT 2425, CARIBOO DISTRICT, EXCEPT PLANS 29255, PGP37227 AND PGP40290.**

**PLAN EPP55596**

BCGS 93J.006

Scale: 1 : 750 (Distances are in metres)



- LEGEND**
- Standard Iron Post Found
  - Standard Iron Post Placed
  - ⊙ Control Monument Found

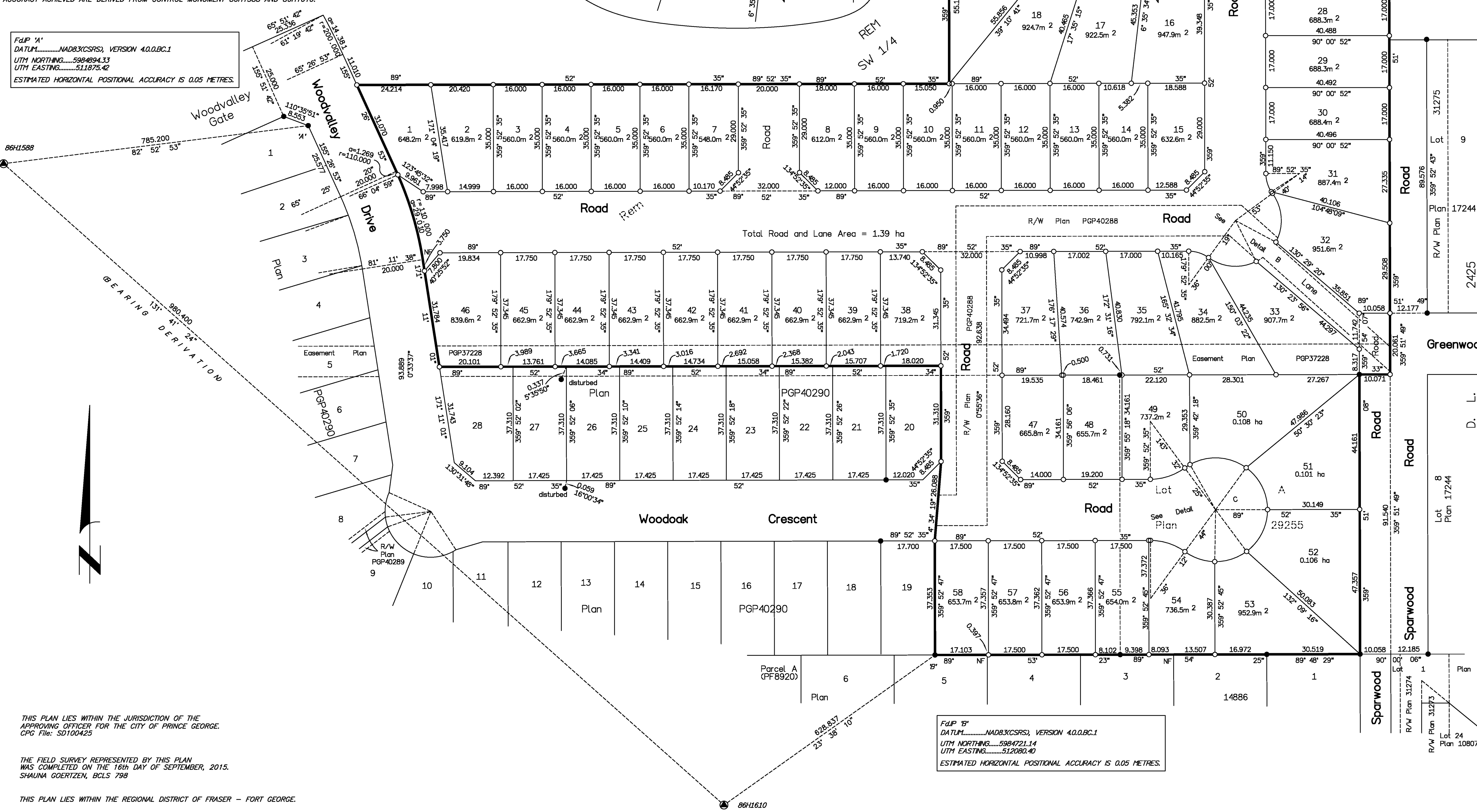
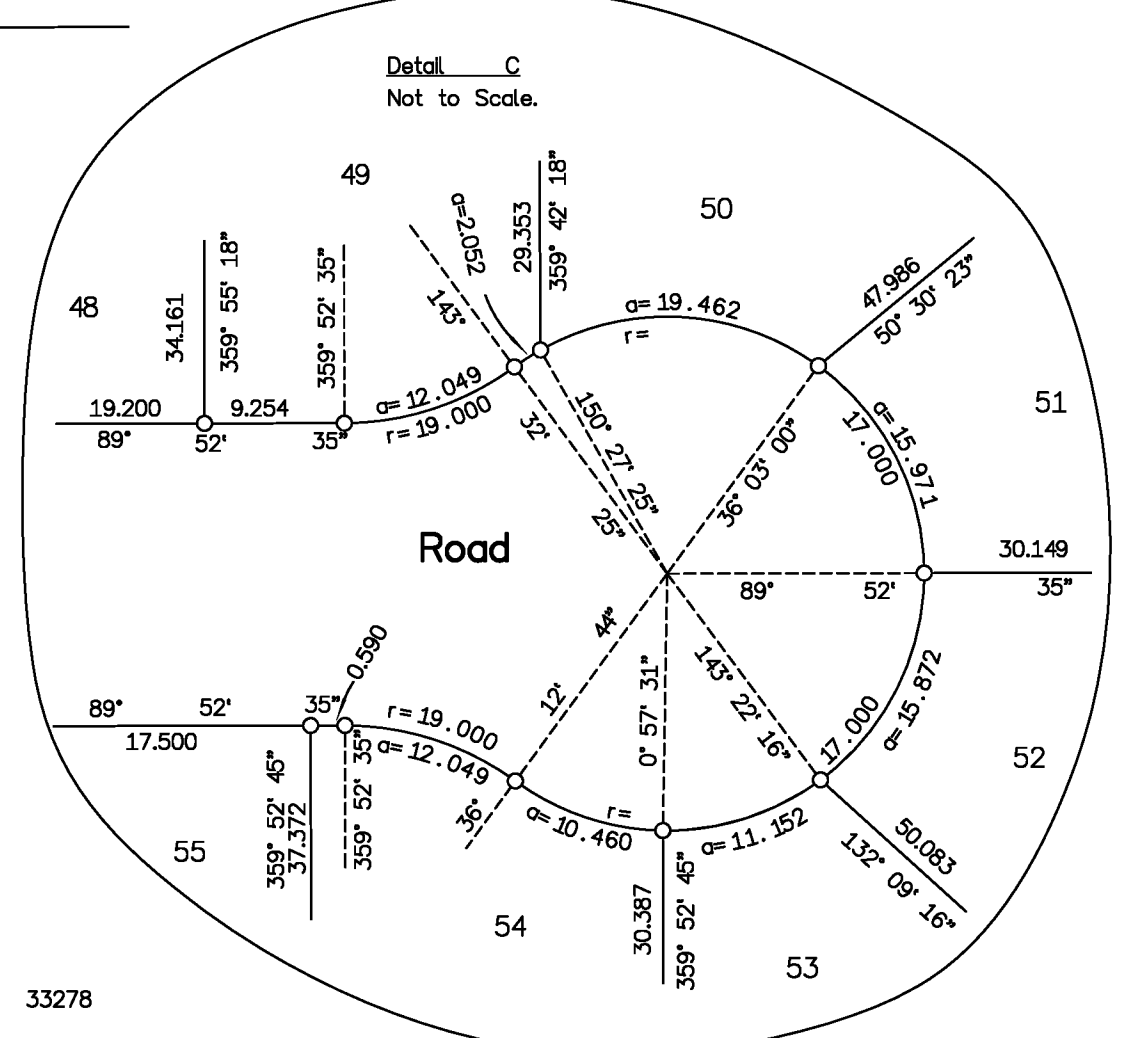
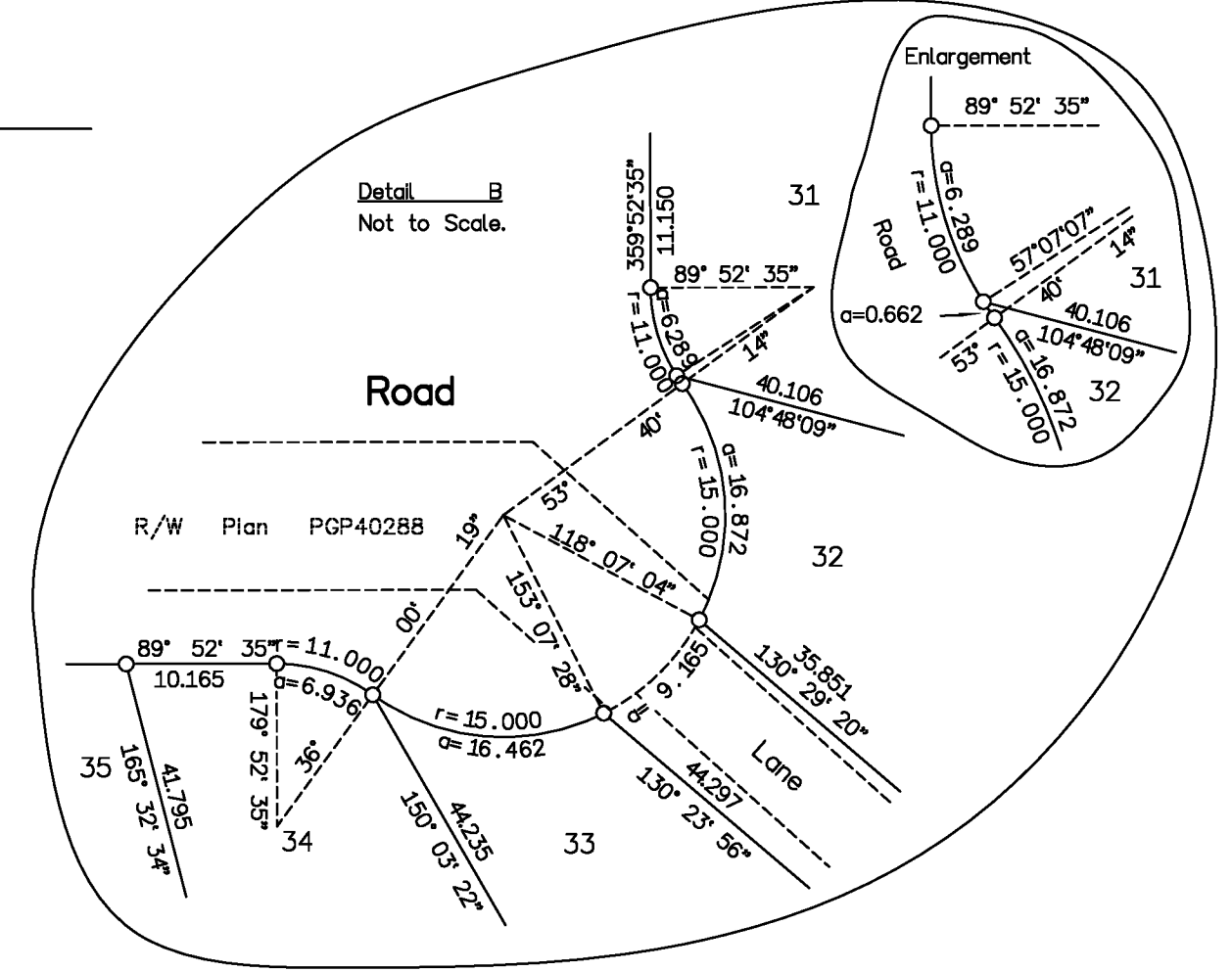
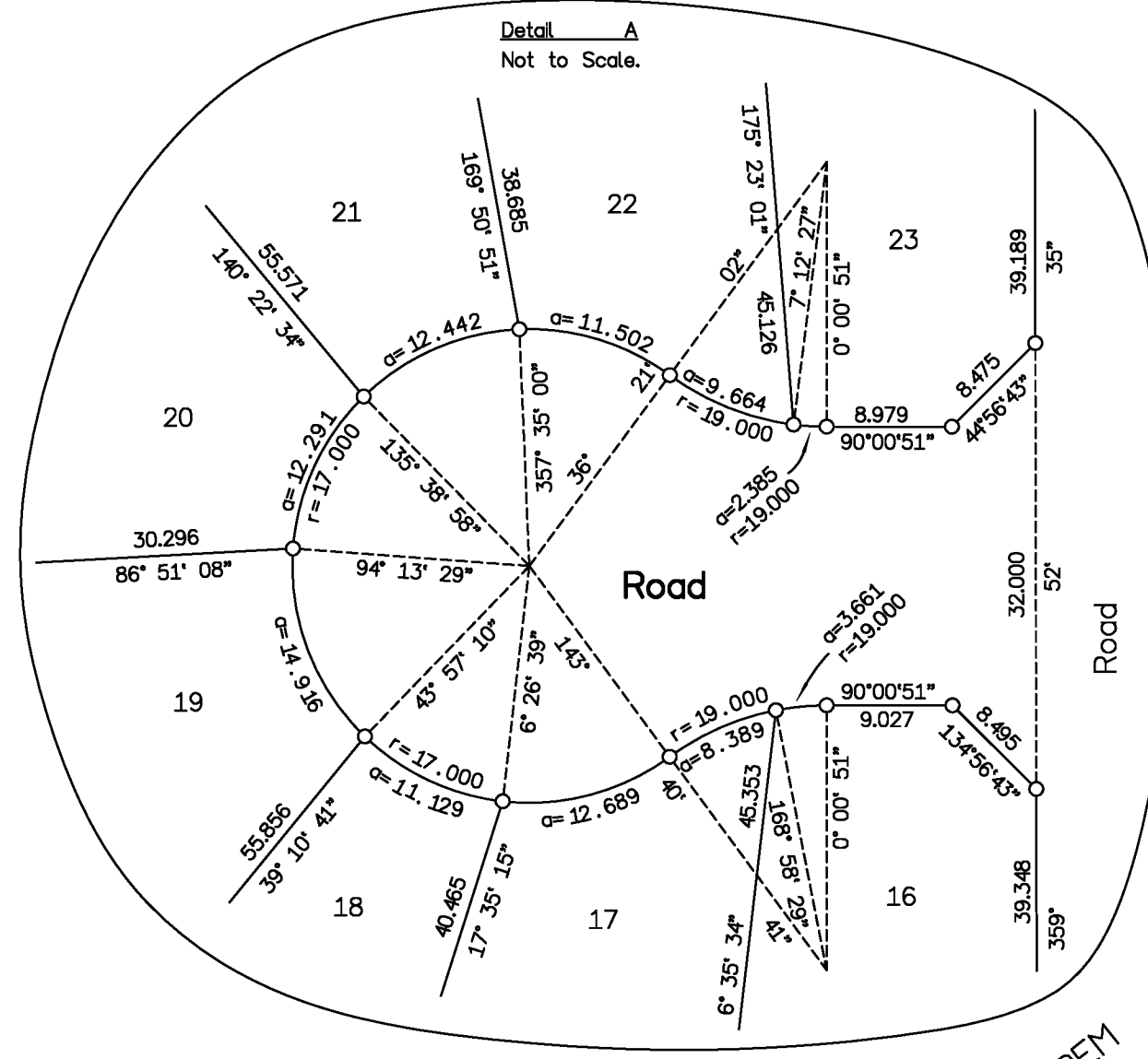
INTEGRATED SURVEY AREA No. 39, CITY OF PRINCE GEORGE NAD83(CSRS).

GRID BEARINGS ARE DERIVED FROM GNSS OBSERVATIONS BETWEEN GEODETIC CONTROL MONUMENTS 86H1588 AND 86H1610.

THIS PLAN SHOWS HORIZONTAL GROUND-LEVEL DISTANCES, UNLESS OTHERWISE SPECIFIED. TO COMPUTE GRID DISTANCES, MULTIPLY GROUND-LEVEL DISTANCES BY THE AVERAGE COMBINED FACTOR OF 0.9994835 WHICH HAS BEEN DERIVED FROM 86H1588 AND 86H1610.

THE UTM COORDINATES AND ESTIMATED NETWORK HORIZONTAL POSITIONAL ACCURACY ACHIEVED ARE DERIVED FROM CONTROL MONUMENT 86H1588 AND 86H1610.

**FdP 'A'**  
 DATUM.....NAD83(CSRS), VERSION 4.0.0.BC.1  
 UTM NORTHING.....5984894.33  
 UTM EASTING.....511875.42  
 ESTIMATED HORIZONTAL POSITIONAL ACCURACY IS 0.05 METRES.



Total Road and Lane Area = 1.39 ha

Parcel A (PF8920)

**FdP 'B'**  
 DATUM.....NAD83(CSRS), VERSION 4.0.0.BC.1  
 UTM NORTHING.....5987211.14  
 UTM EASTING.....512080.41  
 ESTIMATED HORIZONTAL POSITIONAL ACCURACY IS 0.05 METRES.

THIS PLAN LIES WITHIN THE JURISDICTION OF THE APPROVING OFFICER FOR THE CITY OF PRINCE GEORGE.  
 CPG File: SD100425

THE FIELD SURVEY REPRESENTED BY THIS PLAN WAS COMPLETED ON THE 16th DAY OF SEPTEMBER, 2015.  
 SHAUNA GOERTZEN, BCLS 798

THIS PLAN LIES WITHIN THE REGIONAL DISTRICT OF FRASER - FORT GEORGE.

**McElhanney**  
 McElhanney Associates  
 Land Surveying Ltd.  
 Prince George, B.C.  
 E-mail: pgmats@mcclhanney.com  
 Ph: (250) 561-2229 Fax: (250) 563-1941

DL - 2425 File No. 5264-0  
 CPG File No. SD100425

Filed PG EPP55596 EPP55596-144-253-1818 RCVD-2015-12-07 ROST-2015-12-18 03:09 CITY OF PRINCE GEORGE