

STATUTORY RIGHT OF WAY PLAN OVER PART OF LOT 4, DISTRICT LOT 2003, CARIBOO DISTRICT, PLAN BCP22263

PLAN EPP55022

PURSUANT TO SECTION 113 OF THE LAND TITLE ACT
BCGS 93G.087

INTEGRATED SURVEY AREA No. 39, PRINCE GEORGE, NAD83 (CSRS)



THE INTENDED PLOT SIZE OF THIS PLAN IS 432mm IN WIDTH BY 280mm IN HEIGHT (B SIZE) WHEN PLOTTED AT A SCALE OF 1:300

ALL DISTANCES ARE HORIZONTAL GROUND-LEVEL AND ARE SHOWN IN METRES AND DECIMALS THEREOF, UNLESS OTHERWISE INDICATED.

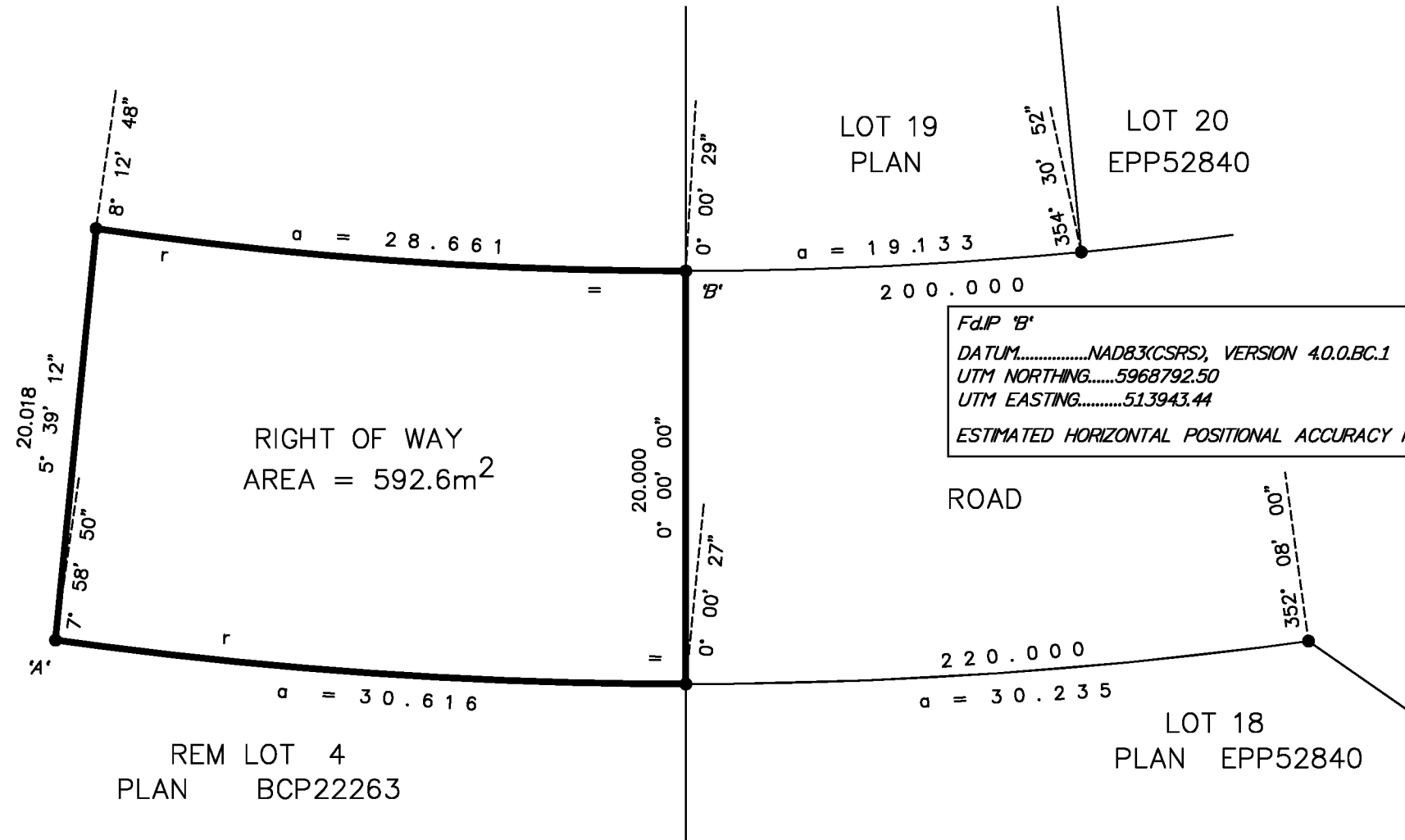
GRID BEARINGS ARE DERIVED FROM PREVIOUSLY INTEGRATED PLAN BCP22263

THE UTM COORDINATES AND ESTIMATED NETWORK HORIZONTAL POSITIONAL ACCURACY ARE DERIVED FROM PLAN BCP22263

THIS PLAN SHOWS HORIZONTAL GROUND-LEVEL DISTANCES UNLESS OTHERWISE SPECIFIED. TO COMPUTE GRID DISTANCES, MULTIPLY GROUND-LEVEL DISTANCES BY THE COMBINED FACTOR OF 0.9995006.

LEGEND

● STANDARD IRON POST FOUND



Fd.I.P 'B'
 DATUM.....NAD83(CSRS), VERSION 4.0.0.BC.1
 UTM NORTHING.....5968792.50
 UTM EASTING.....513943.44
 ESTIMATED HORIZONTAL POSITIONAL ACCURACY IS 0.05 METRES.

Fd.I.P 'A'
 DATUM.....NAD83(CSRS), VERSION 4.0.0.BC.1
 UTM NORTHING.....5968774.64
 UTM EASTING.....513912.94
 ESTIMATED HORIZONTAL POSITIONAL ACCURACY IS 0.05 METRES.

McElhanney
 McElhanney Associates
 Land Surveying Ltd.
 Prince George, B.C.
 E-mail: pgmals@mcelhanney.com
 Ph: (250) 561-2229

THIS PLAN LIES WITHIN THE JURISDICTION OF THE APPROVING OFFICER FOR THE CITY OF PRINCE GEORGE.
 CPG File: SD100435

THE FIELD SURVEY REPRESENTED BY THIS PLAN WAS COMPLETED ON THE 1st DAY OF JUNE, 2015.
 SHAUNA C. GOERTZEN, BCLS 798

THIS PLAN LIES WITHIN THE REGIONAL DISTRICT OF FRASER - FORT GEORGE.

DL - 2003	File No. - 6279-RW2
CPG File No. SD100435	