

# SUBDIVISION PLAN OF PART OF LOT A, DISTRICT LOT 4039, CARIBOO DISTRICT, PLAN 22375 EXCEPT PLANS 27213 AND 28940

PLAN EPP54598

PURSUANT TO SECTION 67 OF THE LAND TITLE ACT.

BCGS 93G.097

INTEGRATED SURVEY AREA NUMBER 39, PRINCE GEORGE



THE INTENDED PLOT SIZE OF THIS PLAN IS 560mm IN WIDTH BY 432mm IN HEIGHT (C SIZE) WHEN PLOTTED AT A SCALE OF 1:500

ALL DISTANCES ARE HORIZONTAL GROUND-LEVEL AND ARE SHOWN IN METRES AND DECIMALS THEREOF, UNLESS OTHERWISE INDICATED.

GRID BEARINGS ARE DERIVED FROM GNSS TIES BETWEEN CONTROL MONUMENTS 86H1854 AND 86H1536.

TO COMPUTE GRID DISTANCES, MULTIPLY GROUND-LEVEL DISTANCES BY THE COMBINED FACTOR OF 0.9994994 WHICH HAS BEEN DERIVED FROM GEODETIC CONTROL MONUMENT 86H1854

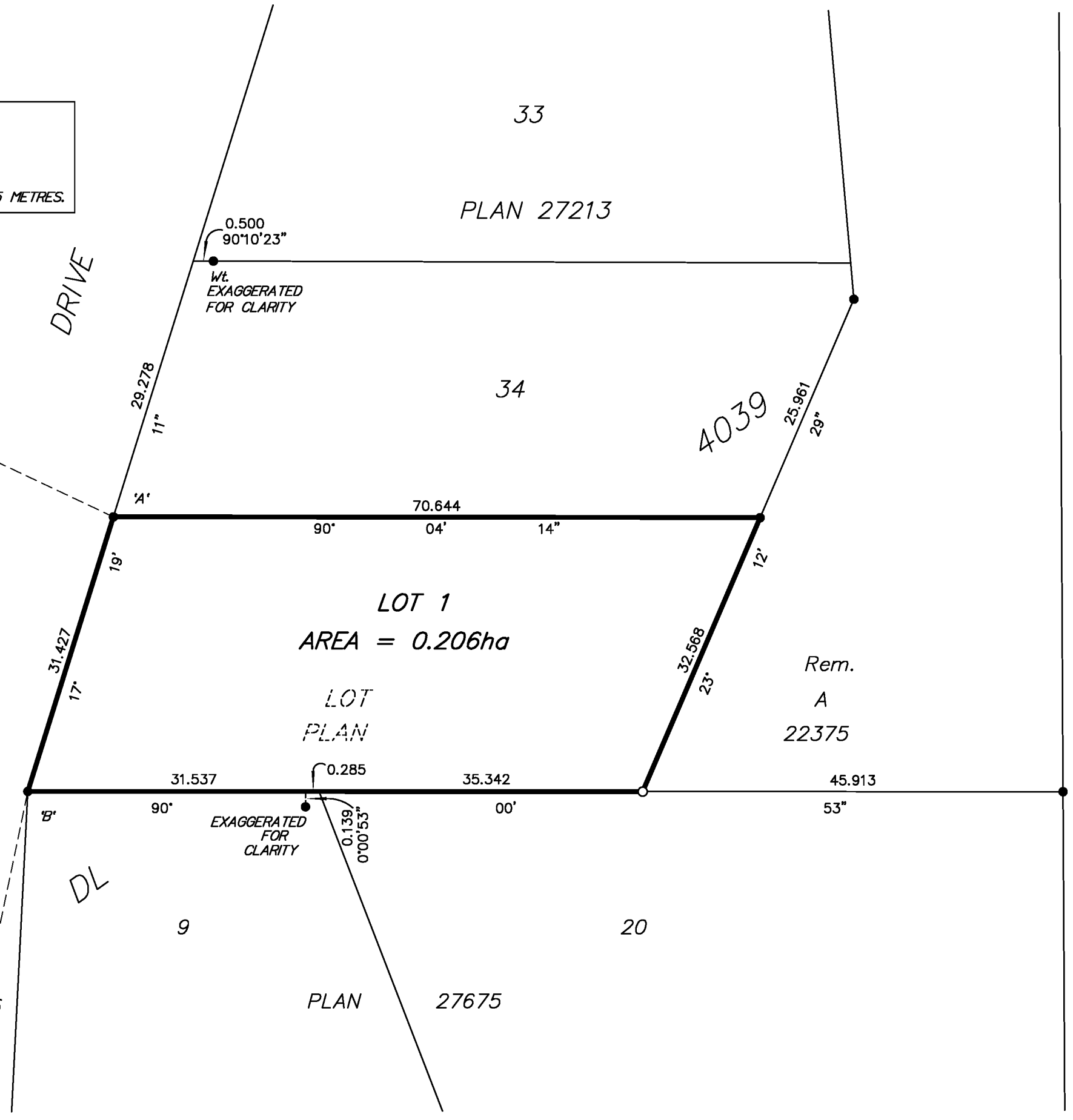
THE UTM COORDINATES AND ESTIMATED NETWORK HORIZONTAL POSITIONAL ACCURACY ACHIEVED ARE DERIVED FROM CONTROL MONUMENT 86H1854.

**LEGEND**

- STANDARD IRON POST PLACED
- STANDARD IRON POST FOUND
- ⊙ INTEGRATED SURVEY AREA MONUMENT

NOTE: THIS PLAN SHOWS ONE OR MORE WITNESS POSTS WHICH ARE NOT SET ON THE TRUE CORNER(S).

FdIP 'A'  
 DATUM.....NAD83(CSRS), VERSION 4.0.0.BC.1  
 UTM NORTHING.....5980245.93  
 UTM EASTING.....515393.26  
 ESTIMATED HORIZONTAL POSITIONAL ACCURACY IS 0.05 METRES.



FdIP 'B'  
 DATUM.....NAD83(CSRS), VERSION 4.0.0.BC.1  
 UTM NORTHING.....5980215.94  
 UTM EASTING.....515383.91  
 ESTIMATED HORIZONTAL POSITIONAL ACCURACY IS 0.05 METRES.



THIS PLAN LIES WITHIN THE JURISDICTION OF THE APPROVING OFFICER FOR THE CITY OF PRINCE GEORGE.

THE FIELD SURVEY REPRESENTED BY THIS PLAN WAS COMPLETED ON THE 4th DAY OF AUGUST, 2015. SHAUNA C. GOERTZEN, BCLS 798

THIS PLAN LIES WITHIN THE REGIONAL DISTRICT OF FRASER-FORT GEORGE.

**McElhanney**  
 McElhanney Associates  
 Land Surveying Ltd.  
 Prince George, B.C.  
 E-mail: pgmals@mcElhanney.com  
 Ph: (250) 561-2229

DL 4039	File No. 2341-6346SD
---------	----------------------