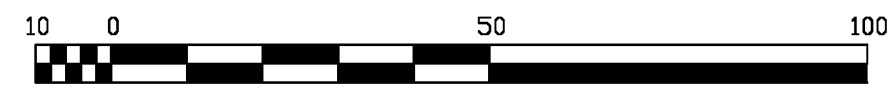


# PLAN OF STATUTORY RIGHT OF WAY OVER PART OF SW 1/4 OF DISTRICT LOT 2425, CARIBOO DISTRICT, EXCEPT PLANS 29255, PGP37227 AND PGP40290.

PLAN EPP54290

PURSUANT TO SECTION 113 OF THE LAND TITLE ACT  
INTEGRATED SURVEY AREA NUMBER 39, PRINCE GEORGE

BCGS 93J.006



THE INTENDED PLOT SIZE OF THIS PLAN IS 560mm IN WIDTH BY 432mm IN HEIGHT (C SIZE) WHEN PLOTTED AT A SCALE OF 1:1000

ALL DISTANCES ARE HORIZONTAL GROUND-LEVEL AND ARE SHOWN IN METRES AND DECIMALS THEREOF, UNLESS OTHERWISE INDICATED.

GRID BEARINGS ARE DERIVED FROM GNSS OBSERVATIONS TO CONTROL MONUMENTS 86H1588 AND 86H1610.

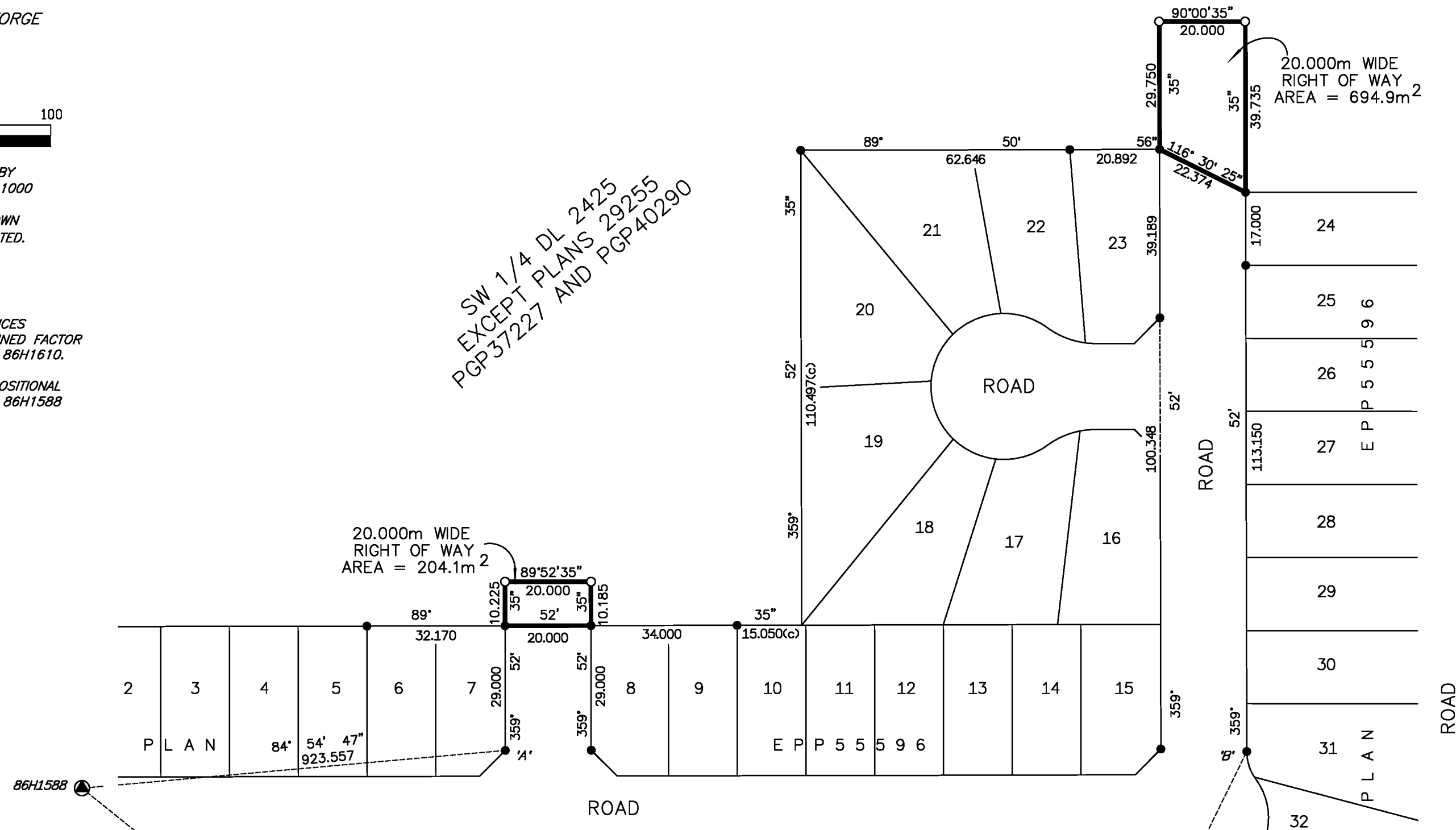
TO COMPUTE GRID DISTANCES, MULTIPLY GROUND-LEVEL DISTANCES BY THE AVERAGE COMBINED FACTOR OF 0.9994835. THE COMBINED FACTOR HAS BEEN DERIVED FROM CONTROL MONUMENTS 86H1588 AND 86H1610.

THE UTM COORDINATES AND ESTIMATED NETWORK HORIZONTAL POSITIONAL ACCURACY ACHIEVED ARE DERIVED FROM CONTROL MONUMENTS 86H1588 AND 86H1610.

SW 1/4 DL 2425  
EXCEPT PLANS 29255  
PGP37227 AND PGP40290

### LEGEND

- STANDARD IRON POST FOUND
- STANDARD IRON POST PLACED
- ⊙ INTEGRATED SURVEY AREA MONUMENT



FdIP 'A'  
DATUM.....NAD83(CSRS), VERSION 4.0.0.BC.1  
UTM NORTHING.....5984878.93  
UTM EASTING.....512016.12  
ESTIMATED HORIZONTAL POSITIONAL ACCURACY IS 0.05 METRES.

FdIP 'B'  
DATUM.....NAD83(CSRS), VERSION 4.0.0.BC.1  
UTM NORTHING.....5984878.68  
UTM EASTING.....512188.61  
ESTIMATED HORIZONTAL POSITIONAL ACCURACY IS 0.05 METRES.

THE FIELD SURVEY REPRESENTED BY THIS PLAN WAS COMPLETED ON THE 22nd DAY OF JULY, 2015.  
SHAUNA C. GOERTZEN, BCLS 798

THIS PLAN LIES WITHIN THE REGIONAL DISTRICT OF FRASER-FORT GEORGE.

<b>McElhanney</b> McElhanney Associates Land Surveying Ltd. Prince George, B.C. E-mail: pgmals@mcelhanney.com Ph: (250) 561-2229	
DL 2425	File No. 2342-5264-RW2
CPG FILE No.: SD100425	