

REFERENCE PLAN OF PART OF LOTS 6, 7, 8, 9, 15, 16, 17, 18, 21, 22, 23, AND 24, DISTRICT LOT 2014, CARIBOO DISTRICT, PLAN EPP53901, FOR COVENANT PURPOSES

PLAN EPP53907

Pursuant to Section 99(1)(e) of the Land Title Act
BCGS 93G.087



The intended plot size of this plan is 560mm in width by 864mm in height (D size) when plotted at a scale of 1:750.

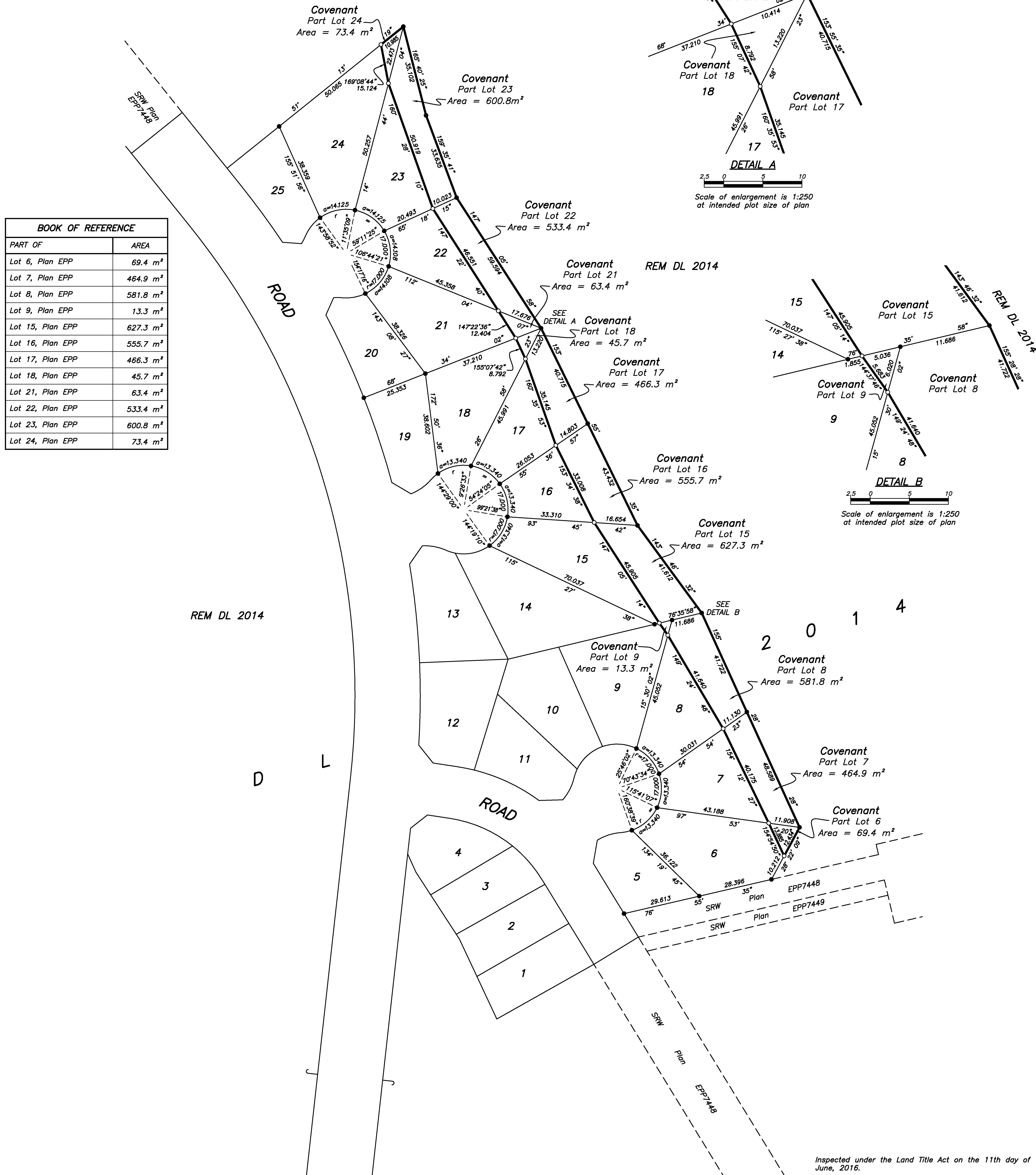
All distances are in metres and decimals thereof.

Integrated Survey Area No. 39, Prince George, NAD83 (CSRS) 4.0.0.BC.1.

Grid bearings are derived from previously integrated Plan EPP53901.

This plan shows horizontal ground-level distances unless otherwise specified. To compute grid distances, multiply ground-level distances by the average combined factor 0.9995086. The average combined factor has been derived from Plan EPP53901

LEGEND
● denotes standard iron post found
○ denotes standard iron post placed



BOOK OF REFERENCE	
PART OF	AREA
Lot 6, Plan EPP	69.4 m ²
Lot 7, Plan EPP	464.9 m ²
Lot 8, Plan EPP	581.8 m ²
Lot 9, Plan EPP	13.3 m ²
Lot 15, Plan EPP	627.3 m ²
Lot 16, Plan EPP	555.7 m ²
Lot 17, Plan EPP	466.3 m ²
Lot 18, Plan EPP	45.7 m ²
Lot 21, Plan EPP	63.4 m ²
Lot 22, Plan EPP	533.4 m ²
Lot 23, Plan EPP	600.8 m ²
Lot 24, Plan EPP	73.4 m ²

Inspected under the Land Title Act on the 11th day of June, 2016.

This plan lies within the Regional District of Fraser-Fort George
The field survey represented by this plan was completed on the 20th day of July, 2015.

Tracey Peet, BCLS 936
EOR# 176810

WSP
WSP Surveys (BC) Limited Partnership
780-3rd Avenue, Prince George, BC
PROJECT REF./DRAWING No.
010053399-SDCV01-R00