

**SUBDIVISION PLAN OF PART OF DISTRICT LOT 2014, CARIBOO DISTRICT, EXCEPT PLANS 29514, EPP5390 AND EPP16518**

PLAN EPP53901

BCGS 93G.087



The intended plot size of this plan is 864mm in width by 1118mm in height (E size) when plotted at a scale of 1:250.

All distances are in metres and decimals thereof.

Integrated Survey Area No. 39, Prince George, NAD83 (CSRS) 4.0.0.BC.1.

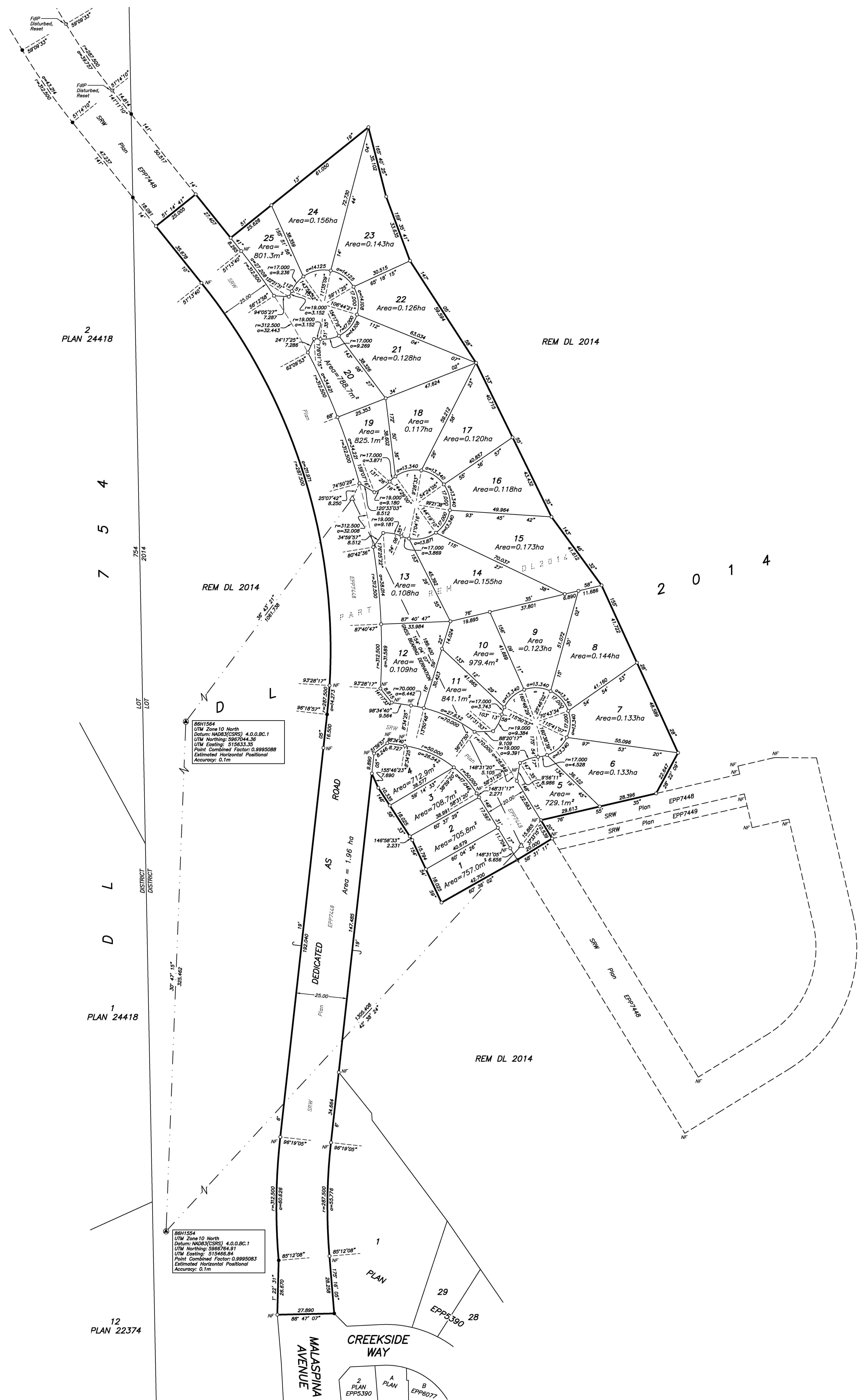
Grid bearings are derived from differential GNSS observations and are referred to the central meridian of UTM Zone 10.

The UTM coordinates and estimated horizontal positional accuracy achieved are derived from dual frequency GNSS ties to geodetic control monuments 85H1554 and 85H1564.

This plan shows horizontal ground-level distances unless otherwise specified. To compute grid distances, multiply ground-level distances by the average combined factor 0.9995086. The average combined factor has been determined based on an ellipsoidal elevation of 616.24 metres. COVD28 (HTV2.0)

**LEGEND**

- denotes control monument found
- denotes standard iron post found
- denotes standard iron post placed
- △ denotes traverse hub placed



85H1564  
 UTM Zone 10 North  
 Datum: NAD83(CSRS) 4.0.0.BC.1  
 UTM Northing: 5867544.36  
 UTM Easting: 515633.35  
 Point Combined Factor: 0.9995086  
 Estimated Horizontal Positional Accuracy: 0.1m

85H1554  
 UTM Zone 10 North  
 Datum: NAD83(CSRS) 4.0.0.BC.1  
 UTM Northing: 586764.91  
 UTM Easting: 515468.84  
 Point Combined Factor: 0.9995083  
 Estimated Horizontal Positional Accuracy: 0.1m