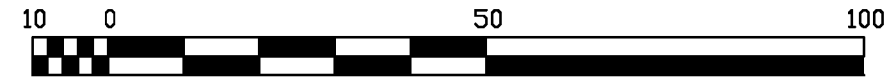


SUBDIVISION PLAN OF LOT 3, PLAN PGP39952 AND PART OF LOT 4, PLAN PGP39683, ALL OF DISTRICT LOT 754, CARIBOO DISTRICT

PLAN EPP53689

PURSUANT TO SECTION 67 OF THE LAND TITLE ACT
BCGS 93G.087

INTEGRATED SURVEY AREA NUMBER 39, PRINCE GEORGE



THE INTENDED PLOT SIZE OF THIS PLAN IS 560mm IN WIDTH BY 432mm IN HEIGHT (C SIZE) WHEN PLOTTED AT A SCALE OF 1:1000

ALL DISTANCES ARE HORIZONTAL GROUND-LEVEL AND ARE SHOWN IN METRES AND DECIMALS THEREOF, UNLESS OTHERWISE INDICATED.

GRID BEARINGS ARE DERIVED FROM OBSERVATIONS BETWEEN CONTROL MONUMENTS 86H1549 AND 86H1835,

TO COMPUTE GRID DISTANCES, MULTIPLY GROUND-LEVEL DISTANCES BY THE AVERAGE COMBINED FACTOR OF 0.9995089 WHICH HAS BEEN DERIVED FROM GEODETIC CONTROL MONUMENTS 85H1549 AND 85H1835.

LEGEND

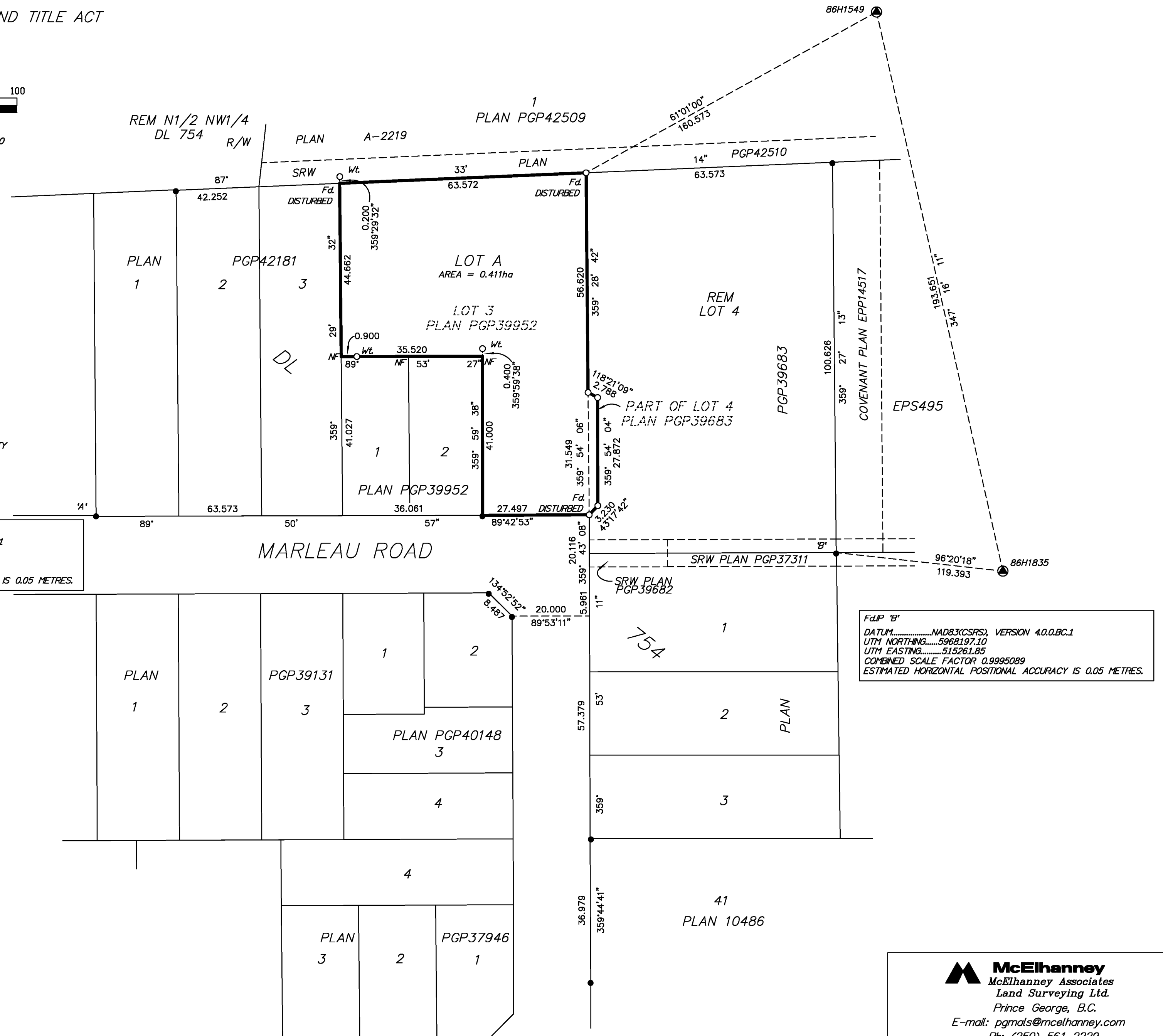
- STANDARD IRON POST FOUND
- STANDARD IRON POST PLACED
- ⊙ INTEGRATED SURVEY AREA MONUMENT

NOTE: THIS PLAN SHOWS ONE OR MORE WITNESS POSTS WHICH ARE NOT SET ON THE TRUE CORNER(S).

SOME LINES AND POSTS MAY BE SHOWN EXAGGERATED FOR CLARITY

FdIP 'A'
DATUM.....NAD83(CSRS), VERSION 4.0.0.BC.1
UTM NORTHING.....5968206.43
UTM EASTING.....515071.14
COMBINED SCALE FACTOR 0.9995089
ESTIMATED HORIZONTAL POSITIONAL ACCURACY IS 0.05 METRES.

FdIP 'B'
DATUM.....NAD83(CSRS), VERSION 4.0.0.BC.1
UTM NORTHING.....5968197.10
UTM EASTING.....515261.85
COMBINED SCALE FACTOR 0.9995089
ESTIMATED HORIZONTAL POSITIONAL ACCURACY IS 0.05 METRES.



INSPECTED UNDER THE LAND TITLE ACT ON THE 16th DAY OF MARCH, 2016.

THE FIELD SURVEY REPRESENTED BY THIS PLAN WAS COMPLETED ON THE 3rd DAY OF JULY, 2015. SHAUNA C. GOERTZEN, BCLS 798

THIS PLAN LIES WITHIN THE REGIONAL DISTRICT OF FRASER-FORT GEORGE.

McElhanney
McElhanney Associates
Land Surveying Ltd.
Prince George, B.C.
E-mail: pgmals@mcelhanney.com
Ph: (250) 561-2229

DL 754 File No. - 2342-6225SD