

REFERENCE PLAN OF EASEMENT PLAN OVER PART OF LOT A, DISTRICT LOT 1592, CARIBOO DISTRICT, PLAN PGP42701.

PLAN EPP53531

PURSUANT TO SECTION 99(1)(e) OF THE LAND TITLE ACT.

BCGS 93G.086

THE INTENDED PLOT SIZE OF THIS PLAN IS 560mm IN WIDTH BY 432mm IN HEIGHT (C SIZE) WHEN PLOTTED AT A SCALE OF 1:1000



ALL DISTANCES ARE HORIZONTAL GROUND-LEVEL AND ARE SHOWN IN METRES AND DECIMALS THEREOF, UNLESS OTHERWISE INDICATED.

INTEGRATED SURVEY AREA No. 39, PRINCE GEORGE, NAD83 (CSRS)

GRID BEARINGS ARE DERIVED FROM DIFFERENTIAL DUAL FREQUENCY GNSS OBSERVATIONS TO BCACS PG GCM #106526 AND ARE REFERRED TO THE CENTRAL MERIDIAN OF UTM ZONE 10. TO OBTAIN LOCAL ASTRONOMIC BEARINGS REFERRED TO THE MERIDIAN THROUGH Fd.P 'B', ADD 0°07'55".

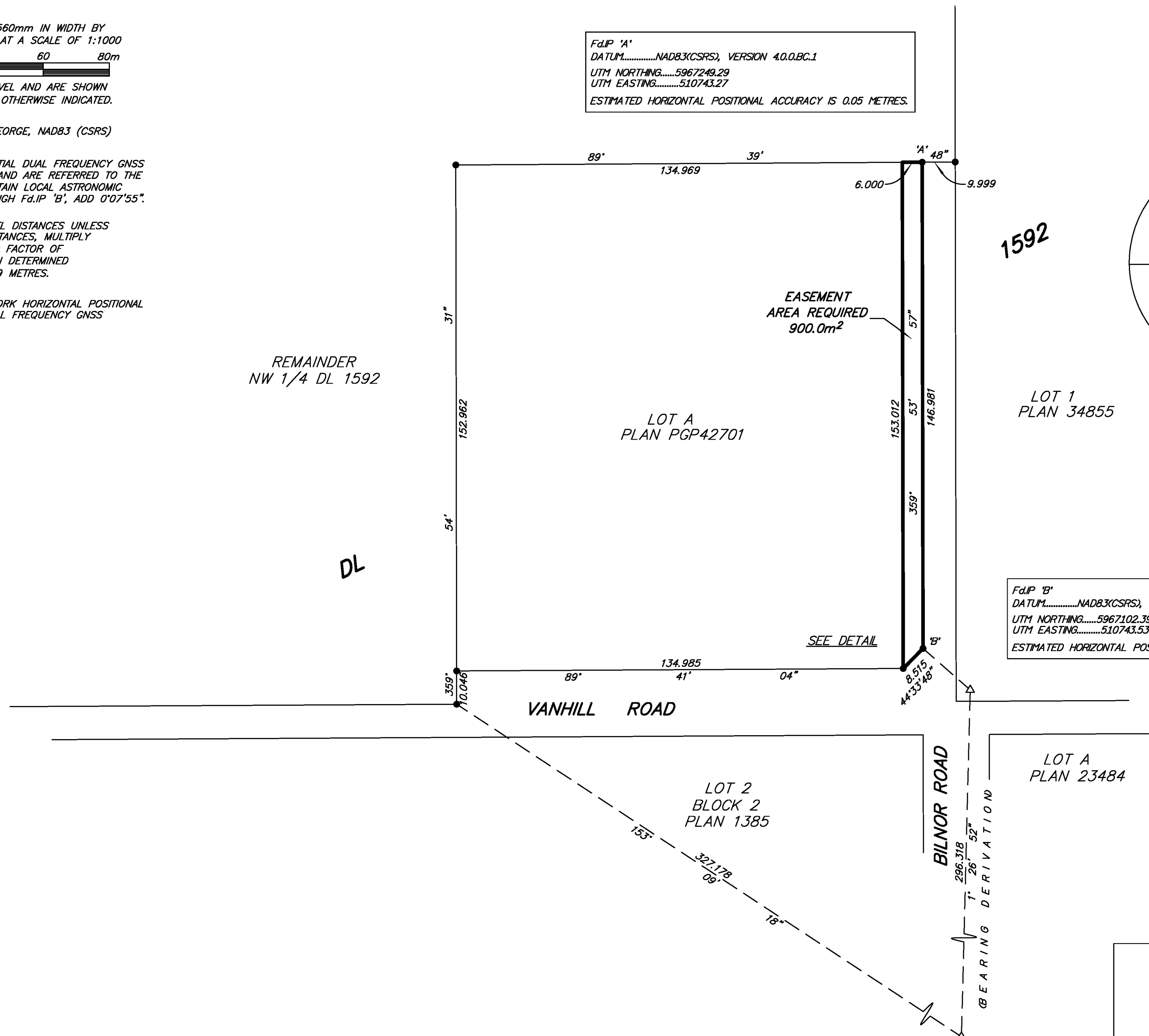
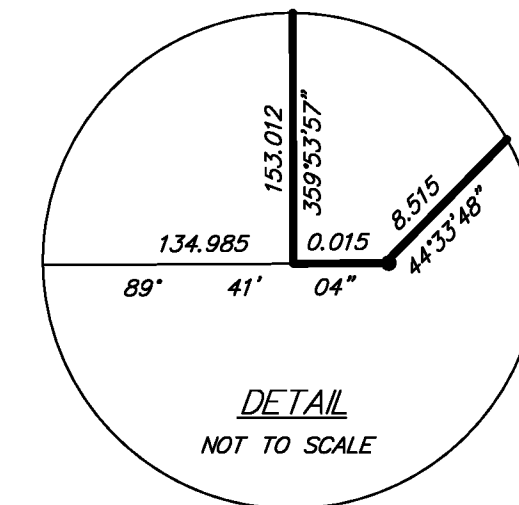
THIS PLAN SHOWS HORIZONTAL GROUND-LEVEL DISTANCES UNLESS OTHERWISE SPECIFIED. TO COMPUTE GRID DISTANCES, MULTIPLY GROUND-LEVEL DISTANCES BY THE COMBINED FACTOR OF 0.9994871. THE COMBINED FACTOR HAS BEEN DETERMINED BASED ON AN ELLIPSOIDAL ELEVATION OF 729 METRES.

THE UTM COORDINATES AND ESTIMATED NETWORK HORIZONTAL POSITIONAL ACCURACY ACHIEVED ARE DERIVED FROM DUAL FREQUENCY GNSS OBSERVATIONS TO BCACS PG GCM #106526

LEGEND

- STANDARD IRON POST FOUND
- △ TRAVERSE HUB

Fd.P 'A'
 DATUM.....NAD83(CSRS), VERSION 4.0.0.BC.1
 UTM NORTHING.....5967249.29
 UTM EASTING.....510743.27
 ESTIMATED HORIZONTAL POSITIONAL ACCURACY IS 0.05 METRES.



Fd.P 'B'
 DATUM.....NAD83(CSRS), VERSION 4.0.0.BC.1
 UTM NORTHING.....5967102.39
 UTM EASTING.....510743.53
 ESTIMATED HORIZONTAL POSITIONAL ACCURACY IS 0.05 METRES.



THE FIELD SURVEY REPRESENTED BY THIS PLAN WAS COMPLETED ON THE 24th DAY OF JUNE, 2015. SHAUNA GOERTZEN, BCLS 798

THIS PLAN LIES WITHIN THE REGIONAL DISTRICT OF FRASER - FORT GEORGE.

McElhanney
 McElhanney Associates
 Land Surveying Ltd.
 Prince George, B.C.
 E-mail: pgmals@mcelhanney.com
 Ph: (250) 561-2229

DL - 1592	File No. - 2341-6335-E
JULY 7, 2015	