

# SUBDIVISION PLAN

OF PART OF THE NORTH 1/2 OF DISTRICT LOT 1597 CARIBOO DISTRICT  
EXCEPT PLANS 14967, 15375, 16761, 16762 AND 19674

PLAN EPP53530

BCGS 93G.086



The intended plot size of this plan is 560mm in width by 864mm in height (D size) when plotted at a scale of 1: 1500.

Distances are horizontal ground level distances and decimals thereof unless otherwise denoted.

### LEGEND

Bearings are NAD83 (CSRS) Grid and are derived from Real Time Kinematic Observations and are referred to the Central Meridian of UTM Zone 10.

The UTM Coordinates and Estimated Network horizontal accuracy are derived from the MASCOT published coordinates and standard deviations for the Geodetic Control Monuments 86H1506 and 86H1504.

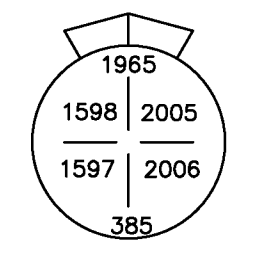
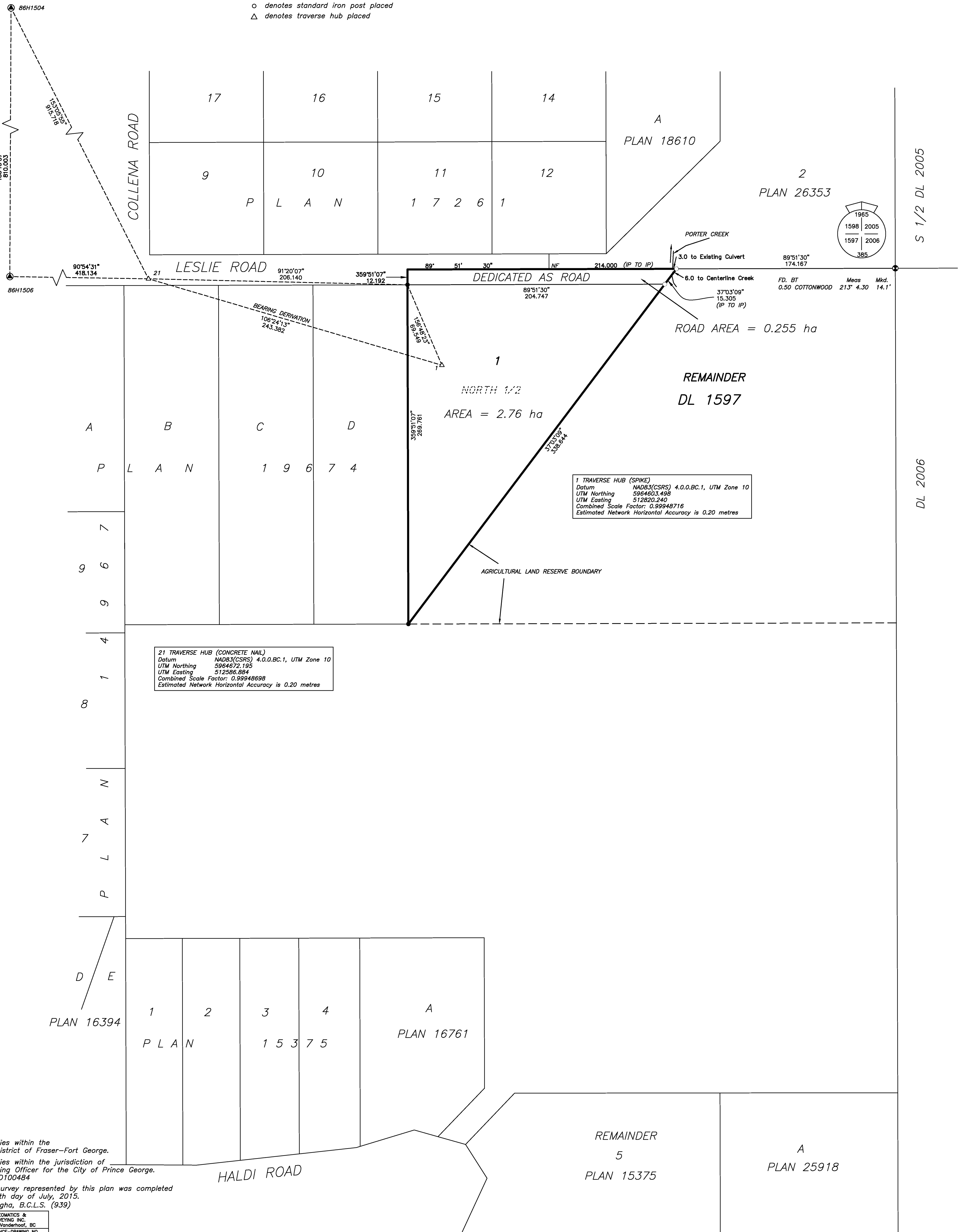
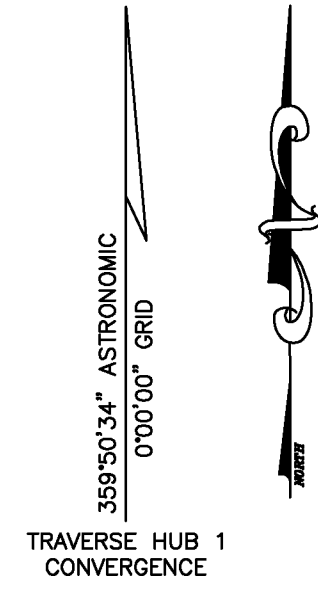
This plan shows horizontal ground-level distances. To compute grid distances, multiply ground level distances by the combined scale factor. The combined scale factor has been determined based on an ellipsoidal elevation of 732.17 metres.

Integrated Survey Area 39, Prince George.

Bearings to Bearing Trees are Magnetic.

### LEGEND

- ⊙ denotes control monument found
- denotes standard capped post found
- denotes standard iron post found
- denotes standard iron post placed
- △ denotes traverse hub placed



1 TRAVERSE HUB (SPIKE)  
Datum NAD83(CSRS) 4.0.0.BC.1, UTM Zone 10  
UTM Northing 5964603.498  
UTM Easting 512820.240  
Combined Scale Factor: 0.99948716  
Estimated Network Horizontal Accuracy is 0.20 metres

21 TRAVERSE HUB (CONCRETE NAIL)  
Datum NAD83(CSRS) 4.0.0.BC.1, UTM Zone 10  
UTM Northing 5964672.195  
UTM Easting 512586.884  
Combined Scale Factor: 0.99948698  
Estimated Network Horizontal Accuracy is 0.20 metres

This plan lies within the Regional District of Fraser-Fort George.  
This plan lies within the jurisdiction of the Approving Officer for the City of Prince George.  
File No. SD100484  
The field survey represented by this plan was completed on the 25th day of July, 2015.  
Manjit Sangha, B.C.L.S. (939)

SANGHA GEOMATICS & LAND SURVEYING INC.  
PO Box 1845 Vanderhoof, BC  
PROJECT REFERENCE-DRAWING NO.  
2015120-00

S 1/2 DL 2005

DL 2006