

# REFERENCE PLAN OF EASEMENT OVER PART OF LOT 1 THROUGH LOT 4, INCLUSIVE, AND LOT 6 THROUGH LOT 8, INCLUSIVE, ALL IN DISTRICT LOT 2003, CARIBOO DISTRICT, PLAN EPP52840

PLAN EPP53058

PURSUANT TO SECTION 99(1)(e) OF THE LAND TITLE ACT  
BCGS 93G.087

FdIP 'A'  
DATUM.....NAD83(CSRS), VERSION 4.0.0.BC.1  
UTM NORTHING.....5968824.57  
UTM EASTING.....514085.51  
ESTIMATED HORIZONTAL POSITIONAL ACCURACY IS 0.05 METRES.



THE INTENDED PLOT SIZE OF THIS PLAN IS 864mm IN WIDTH BY 560mm IN HEIGHT (D SIZE) WHEN PLOTTED AT A SCALE OF 1:500

INTEGRATED SURVEY AREA No. 39, PRINCE GEORGE, NAD83 (CSRS) VERSION 4.0.0.BC.1

ALL DISTANCES ARE HORIZONTAL GROUND-LEVEL AND ARE SHOWN IN METRES AND DECIMALS THEREOF, UNLESS OTHERWISE INDICATED.

GRID BEARINGS ARE DERIVED FROM PREVIOUSLY INTEGRATED PLAN BCP22263

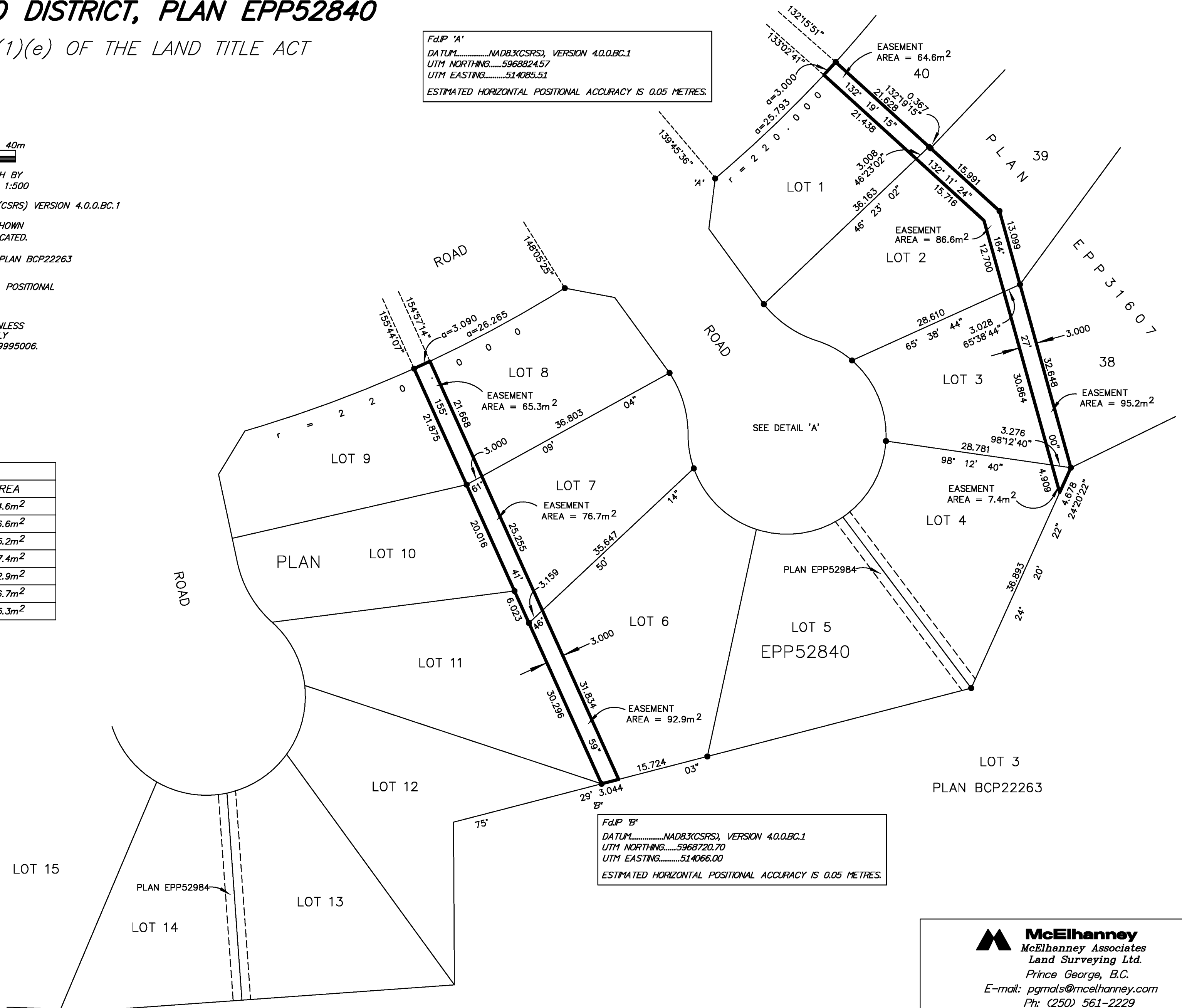
THE UTM COORDINATES AND ESTIMATED NETWORK HORIZONTAL POSITIONAL ACCURACY ARE DERIVED FROM PLAN BCP22263

THIS PLAN SHOWS HORIZONTAL GROUND-LEVEL DISTANCES UNLESS OTHERWISE SPECIFIED. TO COMPUTE GRID DISTANCES, MULTIPLY GROUND-LEVEL DISTANCES BY THE COMBINED FACTOR OF 0.9995006.

**LEGEND**

● STANDARD IRON POST FOUND

BOOK OF REFERENCE	
DESCRIPTION	AREA
Lot 1, Plan EPP52840	64.6m <sup>2</sup>
Lot 2, Plan EPP52840	86.6m <sup>2</sup>
Lot 3, Plan EPP52840	95.2m <sup>2</sup>
Lot 4, Plan EPP52840	7.4m <sup>2</sup>
Lot 6, Plan EPP52840	92.9m <sup>2</sup>
Lot 7, Plan EPP52840	76.7m <sup>2</sup>
Lot 8, Plan EPP52840	65.3m <sup>2</sup>



FdIP 'B'  
DATUM.....NAD83(CSRS), VERSION 4.0.0.BC.1  
UTM NORTHING.....5968720.70  
UTM EASTING.....514066.00  
ESTIMATED HORIZONTAL POSITIONAL ACCURACY IS 0.05 METRES.

THIS PLAN LIES WITHIN THE JURISDICTION OF THE APPROVING OFFICER FOR THE CITY OF PRINCE GEORGE.  
CPG File: SD100435

THE FIELD SURVEY REPRESENTED BY THIS PLAN WAS COMPLETED ON THE 1st DAY OF JUNE, 2015.  
SHAUNA C. GOERTZEN, BCLS 798

THIS PLAN LIES WITHIN THE REGIONAL DISTRICT OF FRASER - FORT GEORGE.

**McElhanney**  
McElhanney Associates  
Land Surveying Ltd.  
Prince George, B.C.  
E-mail: pgmals@mcElhanney.com  
Ph: (250) 561-2229

DL - 2003	File No. - 6279-EASE
CPG File No. SD100435	