

SUBDIVISION PLAN OF LOT 2 PLAN BCP22263 EXCEPT PLAN EPP31607 AND PART OF LOT 4 PLAN BCP22263 ALL IN DISTRICT LOT 2003 CARIBOO DISTRICT

PLAN EPP52840

PURSUANT TO SECTION 67 OF THE LAND TITLE ACT

BCGS 93G.087

INTEGRATED SURVEY AREA No. 39, PRINCE GEORGE, NAD83 (CSRS)



THE INTENDED PLOT SIZE OF THIS PLAN IS 580mm IN WIDTH BY 432mm IN HEIGHT (C SIZE) WHEN PLOTTED AT A SCALE OF 1:750

INTEGRATED SURVEY AREA No. 39, PRINCE GEORGE, NAD83 (CSRS) VERSION 4.0.0.BC.1

ALL DISTANCES ARE HORIZONTAL GROUND-LEVEL AND ARE SHOWN IN METRES AND DECIMALS THEREOF, UNLESS OTHERWISE INDICATED.

GRID BEARINGS ARE DERIVED FROM PREVIOUSLY INTEGRATED PLAN BCP22263

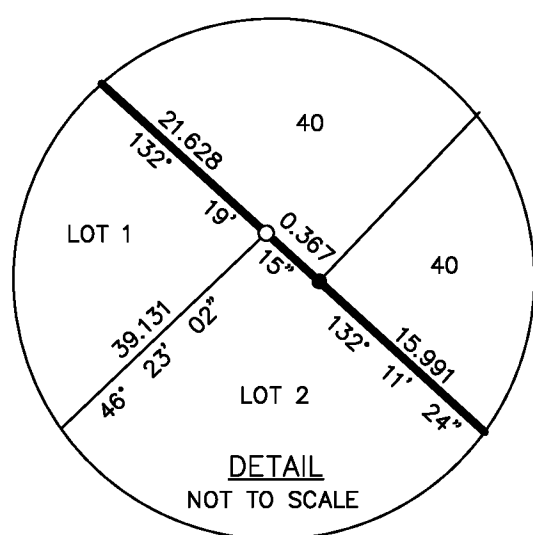
THE UTM COORDINATES AND ESTIMATED NETWORK HORIZONTAL POSITIONAL ACCURACY ARE DERIVED FROM PLAN BCP22263

THIS PLAN SHOWS HORIZONTAL GROUND-LEVEL DISTANCES UNLESS OTHERWISE SPECIFIED. TO COMPUTE GRID DISTANCES, MULTIPLY GROUND-LEVEL DISTANCES BY THE COMBINED FACTOR OF 0.9995006.

LEGEND

- STANDARD IRON POST FOUND
- STANDARD IRON POST PLACED
- STANDARD LEAD PLUG PLACED

SOME RADIAL LINES MAY BE EXAGGERATED FOR CLARITY



FdP 'A'
 DATUM.....NAD83(CSRS), VERSION 4.0.0.BC.1
 UTM NORTHING.....5968860.17
 UTM EASTING.....514093.37
 ESTIMATED HORIZONTAL POSITIONAL ACCURACY IS 0.05 METRES.

FdP 'B'
 DATUM.....NAD83(CSRS), VERSION 4.0.0.BC.1
 UTM NORTHING.....596886.22
 UTM EASTING.....514040.75
 ESTIMATED HORIZONTAL POSITIONAL ACCURACY IS 0.05 METRES.

INSPECTED UNDER THE LAND TITLE ACT ON THE 11th DAY OF APRIL, 2016.

THIS PLAN LIES WITHIN THE JURISDICTION OF THE APPROVING OFFICER FOR THE CITY OF PRINCE GEORGE
 CPG File: SD100435

THE FIELD SURVEY REPRESENTED BY THIS PLAN WAS COMPLETED ON THE 1st DAY OF JUNE, 2015.
 SHAUNA C. GOERTZEN, BCLS 798

THIS PLAN LIES WITHIN THE REGIONAL DISTRICT OF FRASER - FORT GEORGE.

McElhanney
 McElhanney Associates
 Land Surveying Ltd.
 Prince George, B.C.
 E-mail: pgmats@mcelhanney.com
 Ph: (250) 561-2229

DL- 2003 File No. 2342-6279SD
 CPG File No. SD100435