

REFERENCE PLAN OF EASEMENT OVER PART OF LOTS 1 AND 2, DISTRICT LOT 1599, CARIBOO DISTRICT, PLAN EPP50755.

PLAN EPP52299

PURSUANT TO SECTION 99(1)(e) OF THE LAND TITLE ACT.

BCGS 93G.086

INTEGRATED SURVEY AREA No. 39, PRINCE GEORGE, NAD83 (CSRS) 4.0.0.BC.1

THE INTENDED PLOT SIZE OF THIS PLAN IS 432mm IN WIDTH BY 560mm IN HEIGHT (C SIZE) WHEN PLOTTED AT A SCALE OF 1:1000



LEGEND

GRID BEARINGS ARE DERIVED FROM OBSERVATIONS BETWEEN GEODETIC CONTROL MONUMENTS 86H1499 AND 86H1483.

- DENOTES CONTROL MONUMENT
- DENOTES STANDARD IRON POST FOUND

THE UTM COORDINATES AND ESTIMATED HORIZONTAL POSITIONAL ACCURACY ACHIEVED ARE DERIVED FROM THE MASCOT PUBLISHED COORDINATES AND STANDARD DEVIATIONS FOR GEODETIC CONTROL MONUMENTS 86H1499 AND 86H1483.

THIS PLAN SHOWS HORIZONTAL GROUND-LEVEL DISTANCES, UNLESS OTHERWISE SPECIFIED. TO COMPUTE GRID DISTANCES, MULTIPLY GROUND-LEVEL DISTANCES BY THE AVERAGE COMBINED FACTOR OF 0.9994859 WHICH HAS BEEN DERIVED FROM 86H1499 AND 86H1483.

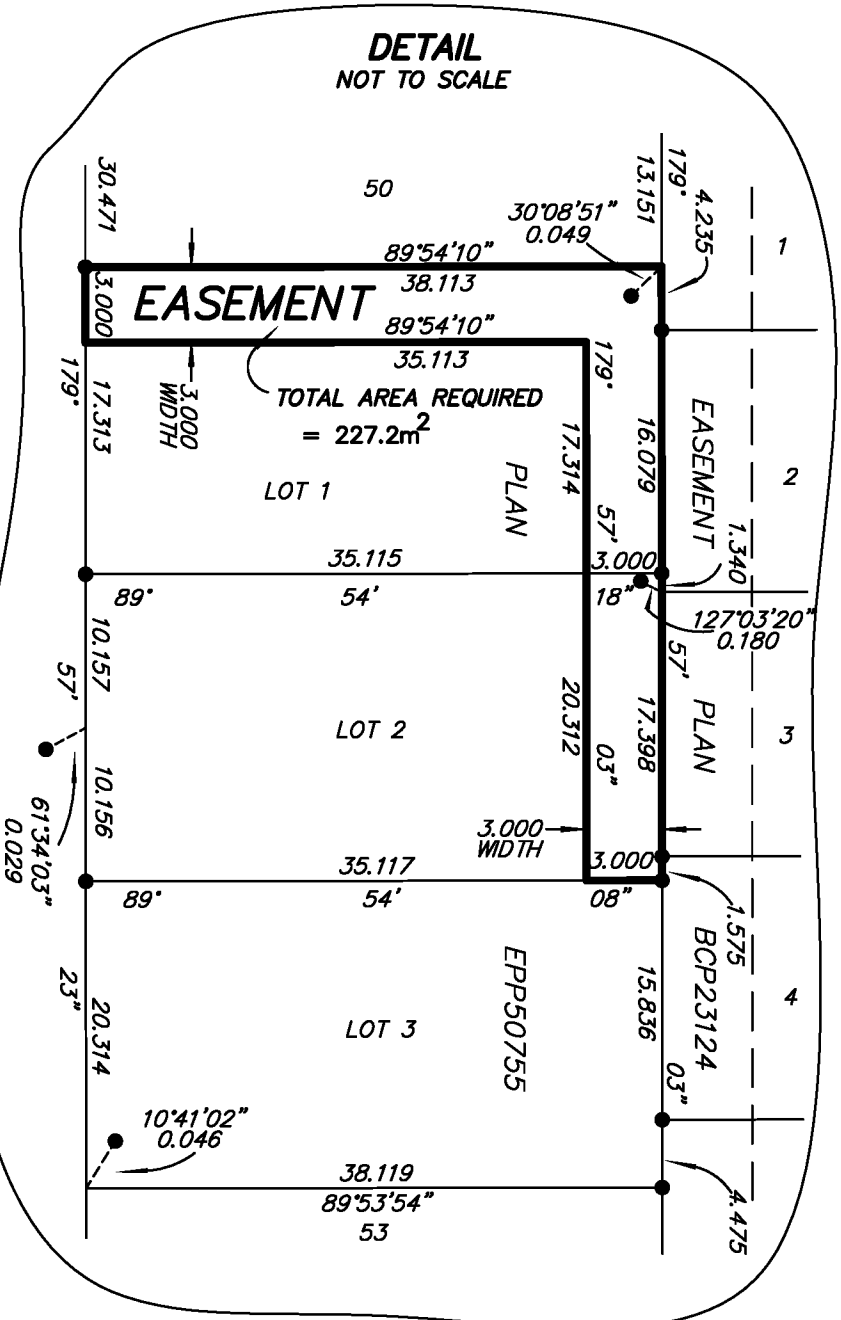
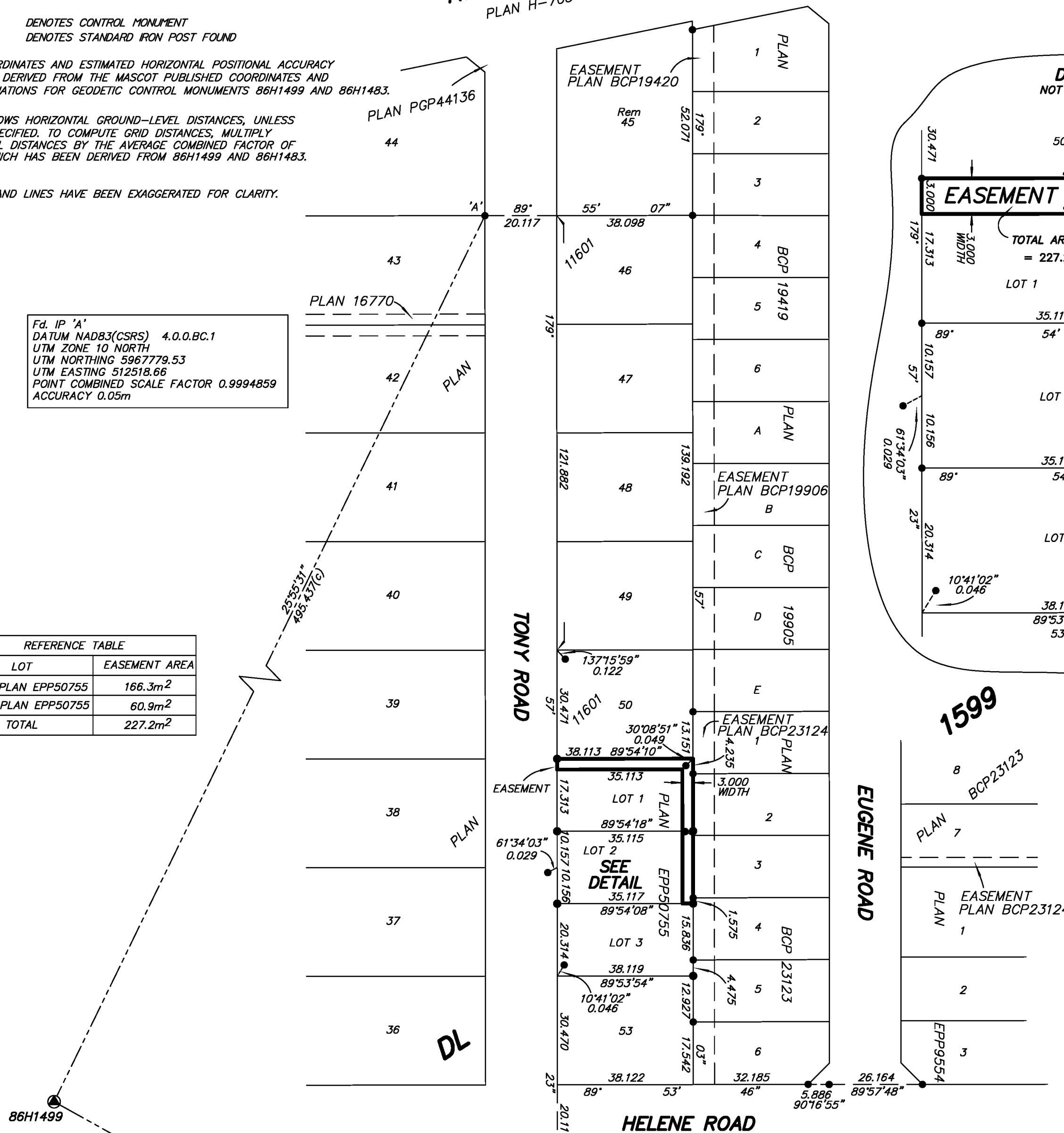
NOTE: SOME POSTS AND LINES HAVE BEEN EXAGGERATED FOR CLARITY.



Fd. IP 'A'
 DATUM NAD83(CSRS) 4.0.0.BC.1
 UTM ZONE 10 NORTH
 UTM NORTHING 5967779.53
 UTM EASTING 512518.66
 POINT COMBINED SCALE FACTOR 0.9994859
 ACCURACY 0.05m

REFERENCE TABLE	
LOT	EASEMENT AREA
LOT 1, PLAN EPP50755	166.3m ²
LOT 2, PLAN EPP50755	60.9m ²
TOTAL	227.2m ²

HIGHWAY 16 WEST
 PLAN H-705 & 22760



Fd. IP 'B'
 DATUM NAD83(CSRS) 4.0.0.BC.1
 UTM ZONE 10 NORTH
 UTM NORTHING 5967515.83
 UTM EASTING 512538.95
 POINT COMBINED SCALE FACTOR 0.9994859
 ACCURACY 0.05m

INSPECTED UNDER THE LAND TITLE ACT ON THE 11th DAY OF SEPTEMBER, 2018

THE FIELD SURVEY REPRESENTED BY THIS PLAN WAS COMPLETED ON THE 9th DAY OF MARCH, 2015. DARREN KENT, BCLS 904

THIS PLAN LIES WITHIN THE REGIONAL DISTRICT OF FRASER - FORT GEORGE.

McElhanney
 McElhanney Associates
 Land Surveying Ltd.
 Prince George, B.C.
 E-mail: pgmats@mcelhanney.com
 Ph: (250) 561-2229

DL- 1599	File No. - 6296-E
CPG FILE No.: SD100424	