

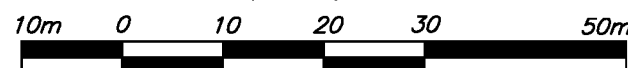
SUBDIVISION PLAN OF LOTS 18 AND 19, DISTRICT LOT 4045, CARIBOO DISTRICT, PLAN EPP32590.

PLAN EPP52296

BCGS 93G.097

INTEGRATED SURVEY AREA No. 39, PRINCE GEORGE, NAD83 (CSRS) 4.0.0.BC.1

THE INTENDED PLOT SIZE OF THIS PLAN IS 560mm IN WIDTH BY 432mm IN HEIGHT (C SIZE) WHEN PLOTTED AT A SCALE OF 1:750



ALL DISTANCES ARE HORIZONTAL GROUND-LEVEL AND ARE SHOWN IN METRES AND DECIMALS THEREOF, UNLESS OTHERWISE INDICATED.

LEGEND

GRID BEARINGS ARE DERIVED FROM OBSERVATIONS BETWEEN GEODETIC CONTROL MONUMENTS 86H1759 AND 86H1775.

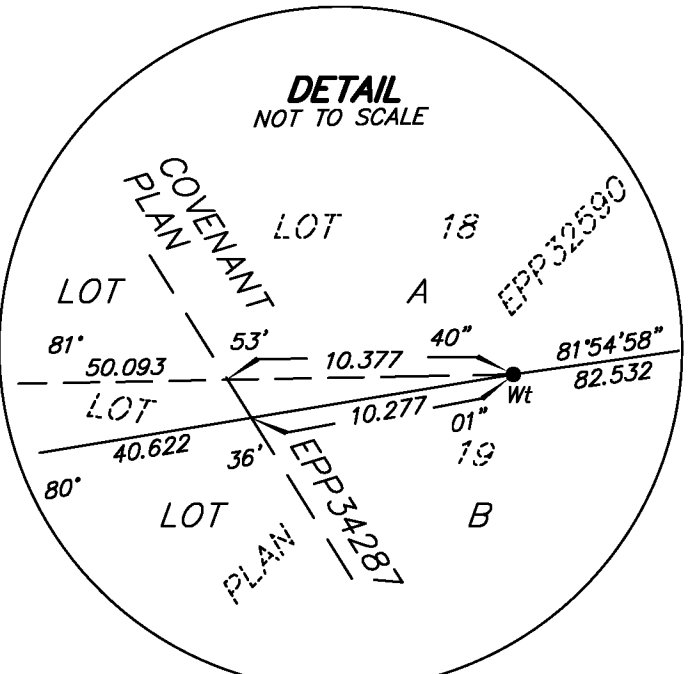
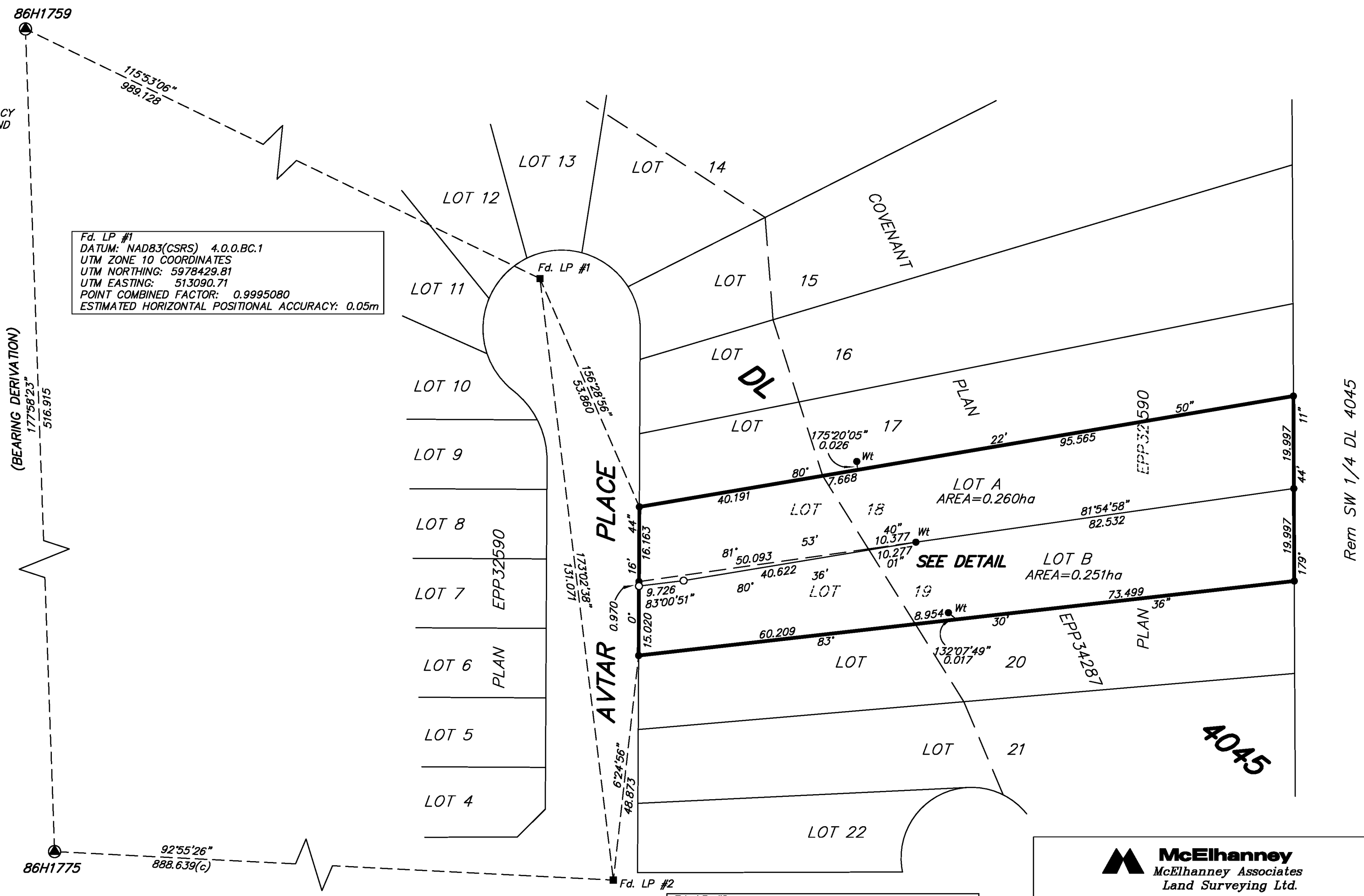
- DENOTES CONTROL MONUMENT
- DENOTES LEAD PLUG FOUND
- DENOTES STANDARD IRON POST FOUND
- DENOTES STANDARD IRON POST PLACED

THIS PLAN SHOWS HORIZONTAL GROUND-LEVEL DISTANCES, UNLESS OTHERWISE SPECIFIED. TO COMPUTE GRID DISTANCES, MULTIPLY GROUND-LEVEL DISTANCES BY THE AVERAGE COMBINED FACTOR OF 0.9995088 WHICH HAS BEEN DERIVED FROM 86H1759 AND 86H1775.

THE UTM COORDINATES AND ESTIMATED HORIZONTAL POSITIONAL ACCURACY ACHIEVED ARE DERIVED FROM THE MASCOT PUBLISHED COORDINATES AND STANDARD DEVIATIONS FOR GEODETIC CONTROL MONUMENTS 86H1759 AND 86H1775.

NOTE: THIS PLAN SHOWS ONE OR MORE WITNESS POSTS WHICH ARE NOT SET ON THE TRUE CORNER(S).

NOTE: SOME POSTS AND LINES HAVE BEEN EXAGGERATED FOR CLARITY.



THIS PLAN LIES WITHIN THE JURISDICTION OF THE APPROVING OFFICER FOR THE CITY OF PRINCE GEORGE. CPG File: SD100483

THE FIELD SURVEY REPRESENTED BY THIS PLAN WAS COMPLETED ON THE 23rd DAY OF APRIL, 2015. DARREN KENT, BCLS 904

THIS PLAN LIES WITHIN THE REGIONAL DISTRICT OF FRASER - FORT GEORGE.

McElhanney
 McElhanney Associates
 Land Surveying Ltd.
 Prince George, B.C.
 E-mail: pgmals@mcElhanney.com
 Ph: (250) 561-2229

| | |
|--------------------|-------------------|
| DL - 4045 | File No. - 6298-S |
| CPG FILE: SD100483 | |

Rem SW 1/4 DL 4045