

**EXPLANATORY PLAN OF EASEMENT OVER PARTS OF:
 LOTS 1 TO 4 DISTRICT LOTS 2616 AND 905
 LOTS 5 TO 8 DISTRICT LOT 2616 AND
 LOTS 11 TO 16 DISTRICT LOT 905
 ALL OF CARIBOO DISTRICT PLAN EPP51089**

For Easement Purposes

Pursuant to Section 99(1)(e) of the Land Title Act

BCGS 93G.087



All distances are in metres and decimals thereof.

The intended plot size of this plan is 864mm in width by 560mm in height (D size) when plotted at a scale of 1:600.

Integrated Survey Area No. 39, City of Prince George, NAD83 (CSRS) 4.0.0.BC.1.

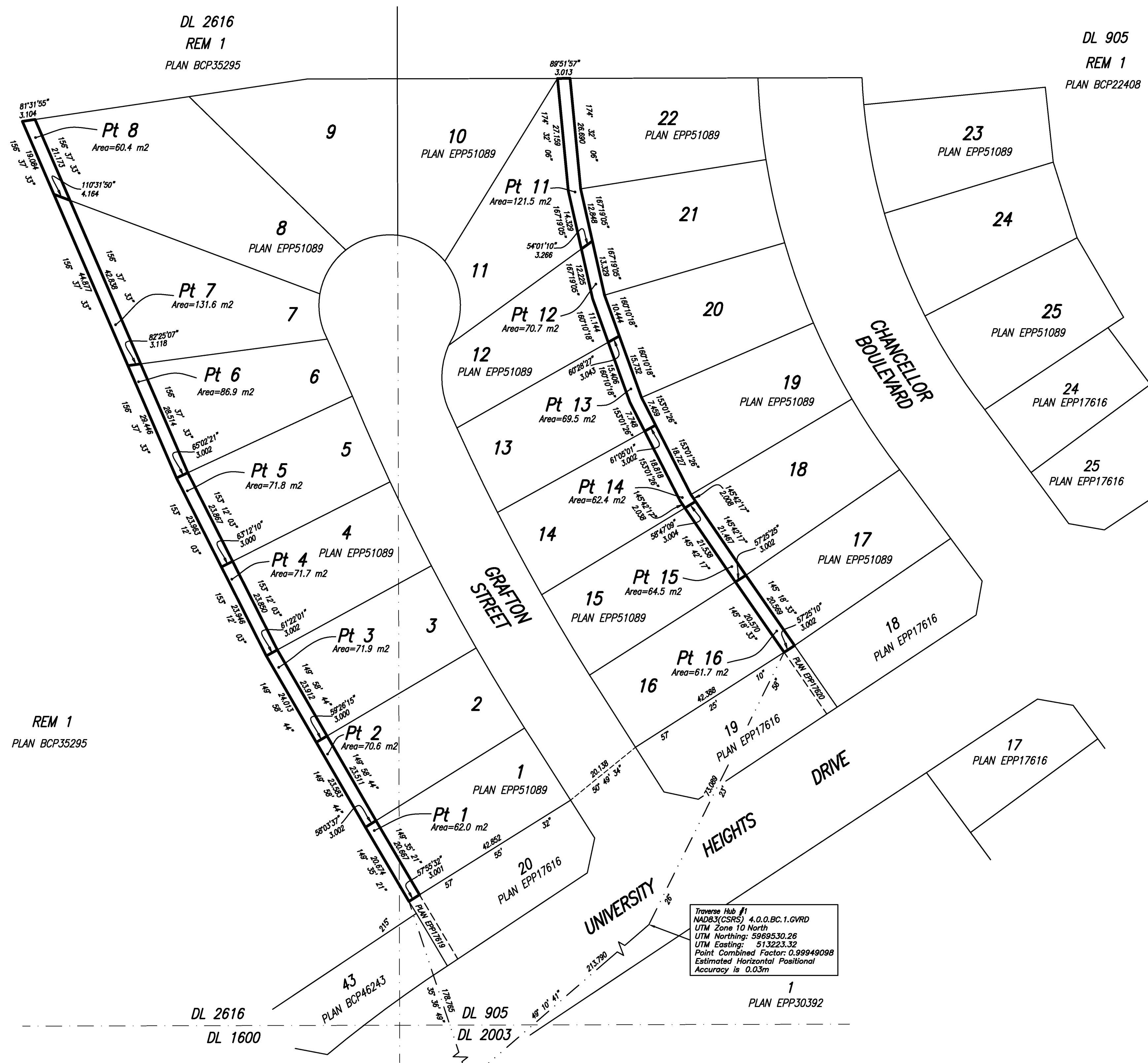
Grid bearings are derived from Plan EPP51089

The UTM coordinates and estimated horizontal positional accuracy achieved are derived from Plan EPP51089

This plan shows horizontal ground level distances except where otherwise noted. To compute grid distances, multiply ground-level distances by combined factor of 0.9994910 which has been derived from Plan EPP51089.

LEGEND

- Pt denotes Part
- m2 denotes metres squared
- REM denotes remainder
- DL denotes District Lot
- TH denotes traverse hub



BOOK OF REFERENCE	
PART OF	AREA
Lot 1 District Lots 2616 and 905 Cariboo District Plan EPP51089	62.0 m2
Lot 2 District Lots 2616 and 905 Cariboo District Plan EPP51089	70.6 m2
Lot 3 District Lots 2616 and 905 Cariboo District Plan EPP51089	71.9 m2
Lot 4 District Lots 2616 and 905 Cariboo District Plan EPP51089	71.7 m2
Lot 5 District Lot 2616 Cariboo District Plan EPP51089	71.8 m2
Lot 6 District Lot 2616 Cariboo District Plan EPP51089	86.9 m2
Lot 7 District Lot 2616 Cariboo District Plan EPP51089	131.6 m2
Lot 8 District Lot 2616 Cariboo District Plan EPP51089	60.4 m2
Lot 11 District Lot 905 Cariboo District Plan EPP51089	121.5 m2
Lot 12 District Lot 905 Cariboo District Plan EPP51089	70.7 m2
Lot 13 District Lot 905 Cariboo District Plan EPP51089	69.5 m2
Lot 14 District Lot 905 Cariboo District Plan EPP51089	62.4 m2
Lot 15 District Lot 905 Cariboo District Plan EPP51089	64.5 m2
Lot 16 District Lot 905 Cariboo District Plan EPP51089	61.7 m2

Traverse Hub #1
 NAD83(CSRS) 4.0.0.BC.1.GVRD
 UTM Zone 10 North
 UTM Northing: 5969530.26
 UTM Easting: 513223.32
 Point Combined Factor: 0.99949098
 Estimated Horizontal Positional Accuracy is 0.03m

Traverse Hub #2
 NAD83(CSRS) 4.0.0.BC.1.GVRD
 UTM Zone 10 North
 UTM Northing: 5969390.50
 UTM Easting: 513061.53
 Point Combined Factor: 0.99949093
 Estimated Horizontal Positional Accuracy is 0.03m

This plan lies within the Regional District of Fraser-Fort George

This plan is based on the following Land Title and Survey Authority of BC records: EPP51089

Sandra A. Wards, BCLS B34
 11th day of May, 2015

ECR#174009

WSP Surveys (BC) Limited Partnership
 300-65 Richmond St, New Westminster, BC
 PROJECT REF./DRAWING No.
 010051994 SDEX01 R00