

**REFERENCE PLAN OF CONSOLIDATION OF
LOT A, DISTRICT LOT 485, CARIBOO DISTRICT, PLAN EPP20645
AND THAT PART OF DISTRICT LOT 485, CARIBOO DISTRICT, ON
PLAN PGP35183 EXCEPT, PLANS EPP14176, EPP36988 AND EPP48144.**

PLAN EPP50761

PURSUANT TO SECTION 100(1)(b) OF THE LAND TITLE ACT.

BCGS 93G.087

THIS PLAN LIES WITHIN INTEGRATED SURVEY
AREA No. 39, PRINCE GEORGE, NAD83 (CSRS) 4.0.0.BC.1

THE INTENDED PLOT SIZE OF THIS PLAN IS 432mm IN WIDTH BY
560mm IN HEIGHT (C SIZE) WHEN PLOTTED AT A SCALE OF 1:1000



ALL DISTANCES ARE SHOWN IN METRES AND
DECIMALS THEREOF, UNLESS OTHERWISE INDICATED.

GRID BEARINGS ARE DERIVED FROM PREVIOUSLY
INTEGRATED PLAN EPP20645.

NOTE: SOME POSTS AND LINES MAY BE EXAGGERATED FOR CLARITY.
NOTE: GEOREFERENCED COORDINATES DERIVED FROM PLAN EPP20645.

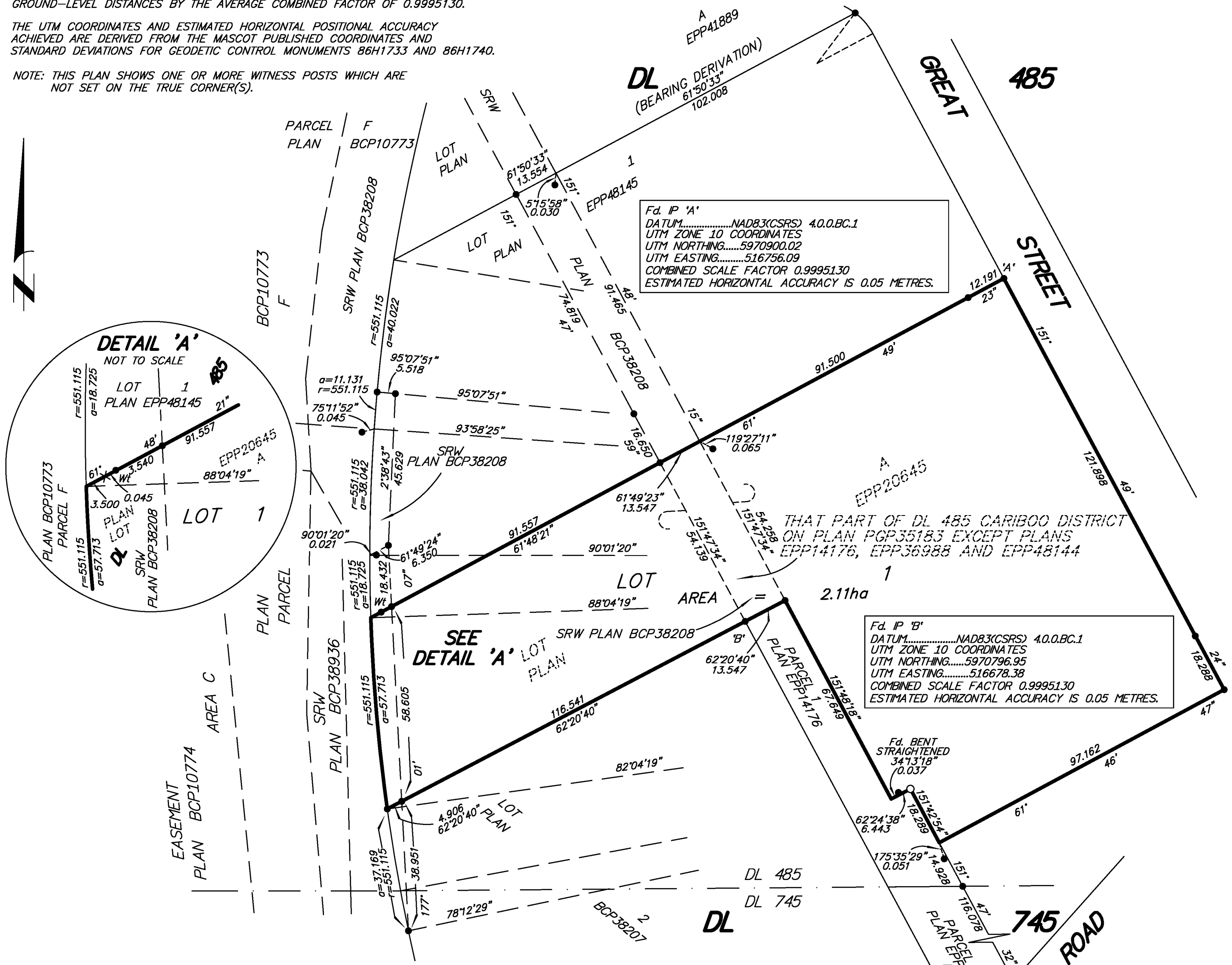
LEGEND

- DENOTES STANDARD IRON POST FOUND
- DENOTES STANDARD IRON POST PLACED
- X DENOTES CALCULATED POINT

THIS PLAN SHOWS HORIZONTAL GROUND-LEVEL DISTANCES UNLESS
OTHERWISE SPECIFIED. TO COMPUTE GRID DISTANCES, MULTIPLY
GROUND-LEVEL DISTANCES BY THE AVERAGE COMBINED FACTOR OF 0.9995130.

THE UTM COORDINATES AND ESTIMATED HORIZONTAL POSITIONAL ACCURACY
ACHIEVED ARE DERIVED FROM THE MASCOT PUBLISHED COORDINATES AND
STANDARD DEVIATIONS FOR GEODETIC CONTROL MONUMENTS 86H1733 AND 86H1740.

NOTE: THIS PLAN SHOWS ONE OR MORE WITNESS POSTS WHICH ARE
NOT SET ON THE TRUE CORNER(S).



THE FIELD SURVEY REPRESENTED BY THIS PLAN
WAS COMPLETED ON THE 8th DAY OF MAY, 2015.
DARREN KENT, BCLS 904

THIS PLAN LIES WITHIN THE REGIONAL DISTRICT OF FRASER - FORT GEORGE.

McElhanney
McElhanney Associates
Land Surveying Ltd.
Prince George, B.C.
E-mail: pgmals@mcElhanney.com
Ph: (250) 561-2229

DL - 485 File No. - 6302-C