

EXPLANATORY PLAN TO ACCOMPANY LEASE OF PART OF A BUILDING ON PARCEL A, DISTRICT LOTS 1430, 8172, 8173, 8176, AND 8130, CARIBOO DISTRICT, PLAN PGP43619.

PLAN EPP49724

Pursuant to Section 99(1)(k) of the Land Title Act.
BCGS 93G.087



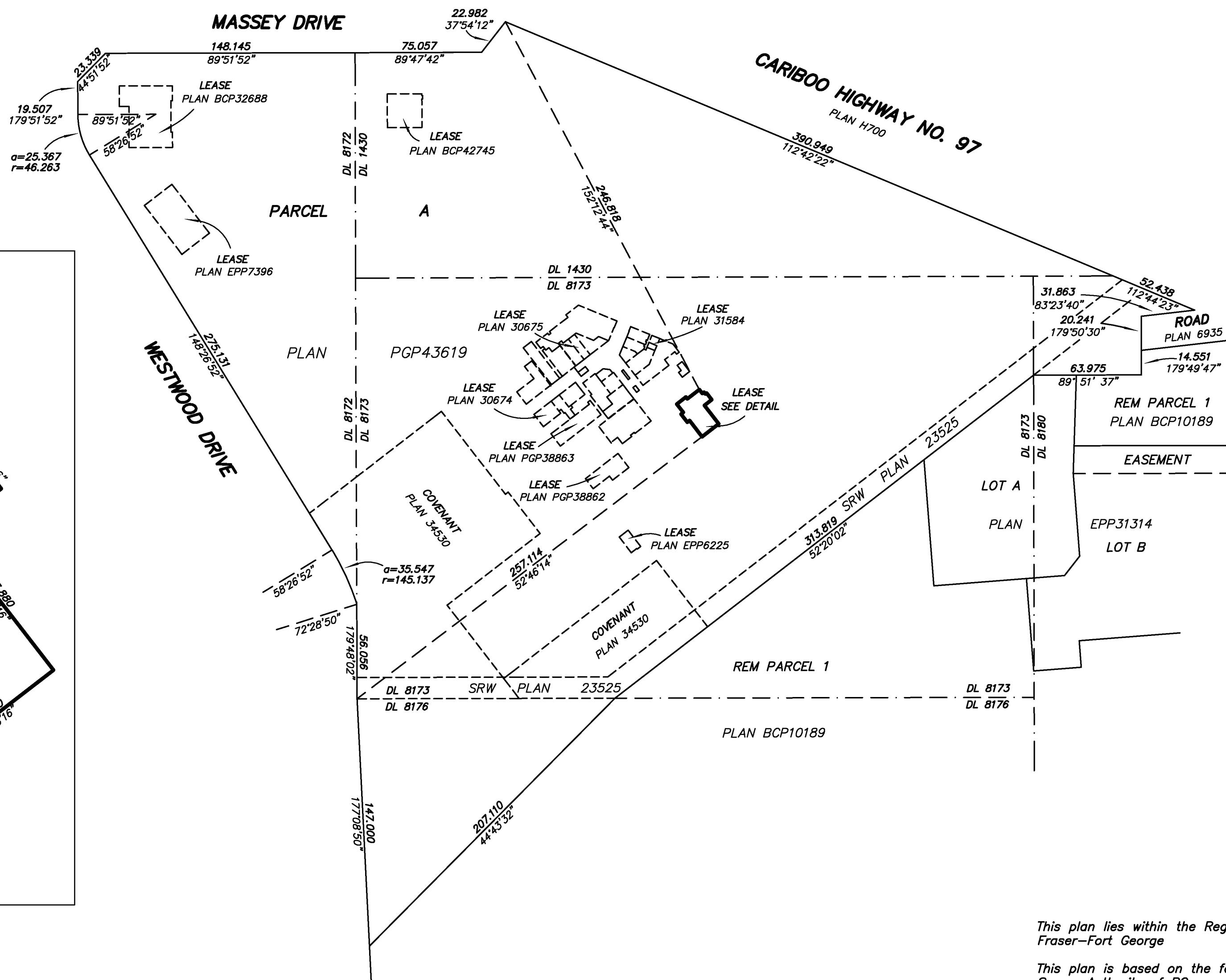
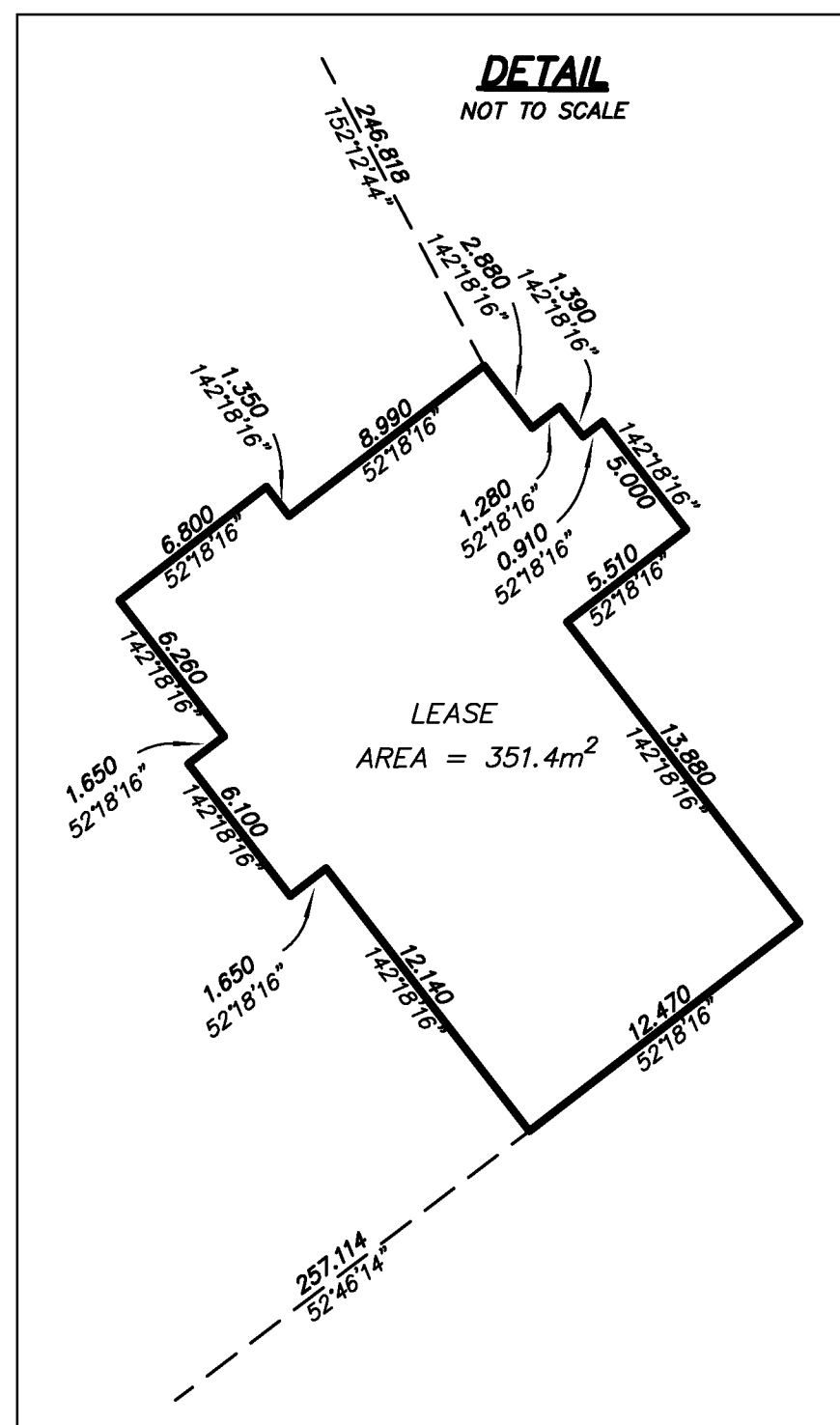
All distances are horizontal ground-level and are in metres and decimals thereof.

The intended plot size of this plan is 560mm in width by 432mm in height (C size) when plotted at a scale of 1:2000.

Bearings are astronomic, derived from Plan PGP43619.

Parcel dimensions are derived from Plan PGP43619.

Lease dimensions are measured to the centreline of interior walls.



This plan lies within the Regional District of Fraser-Fort George

This plan is based on the following Land Title and Survey Authority of BC records: Plan PGP43619.

Tracey Peet, BCLS 936
24th day of March, 2015

S:\Princedge\010052547\001\Working\010052547-TEEX01-R00.dwg
2016/01/26 - 11:03

WSP
WSP Surveys (BC) Limited Partnership
760 - 3rd Avenue, Prince George, BC V2L 3C5
PROJECT REF./DRAWING No.
010052547-TEEX01-R00