

REFERENCE PLAN OF CONSOLIDATION OF LOT 1, DISTRICT LOTS 626, 627, 629, 630 AND 631, PLAN PGP36222 AND LOT 1 DISTRICT LOT 629 PLAN EPP4087, ALL IN CARIBOO DISTRICT

PLAN EPP49265

PURSUANT TO SECTION 100(1)(b) OF THE LAND TITLE ACT.

BCGS 93G.087 AND 93G.097

INTEGRATED SURVEY AREA No. 39, PRINCE GEORGE, NAD83 (CSRS)

THE INTENDED PLOT SIZE OF THIS PLAN IS 560mm IN WIDTH BY 864mm IN HEIGHT (D SIZE) WHEN PLOTTED AT A SCALE OF 1:7500



ALL DISTANCES ARE HORIZONTAL GROUND-LEVEL AND ARE SHOWN IN METRES AND DECIMALS THEREOF, UNLESS OTHERWISE INDICATED.

GRID BEARINGS ARE DERIVED FROM OBSERVATIONS BETWEEN GEODETIC CONTROL MONUMENTS 85H1257 AND 85H1274.

TO COMPUTE GRID DISTANCES, MULTIPLY GROUND-LEVEL DISTANCES BY THE AVERAGE COMBINED FACTOR OF 0.9995022 WHICH HAS BEEN DERIVED FROM GEODETIC CONTROL MONUMENTS 85H1257 AND 85H1274.

LEGEND

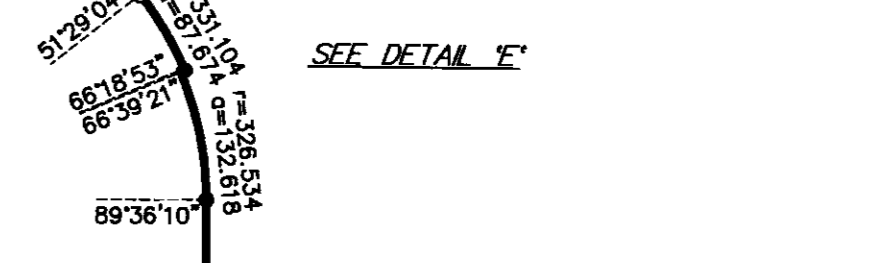
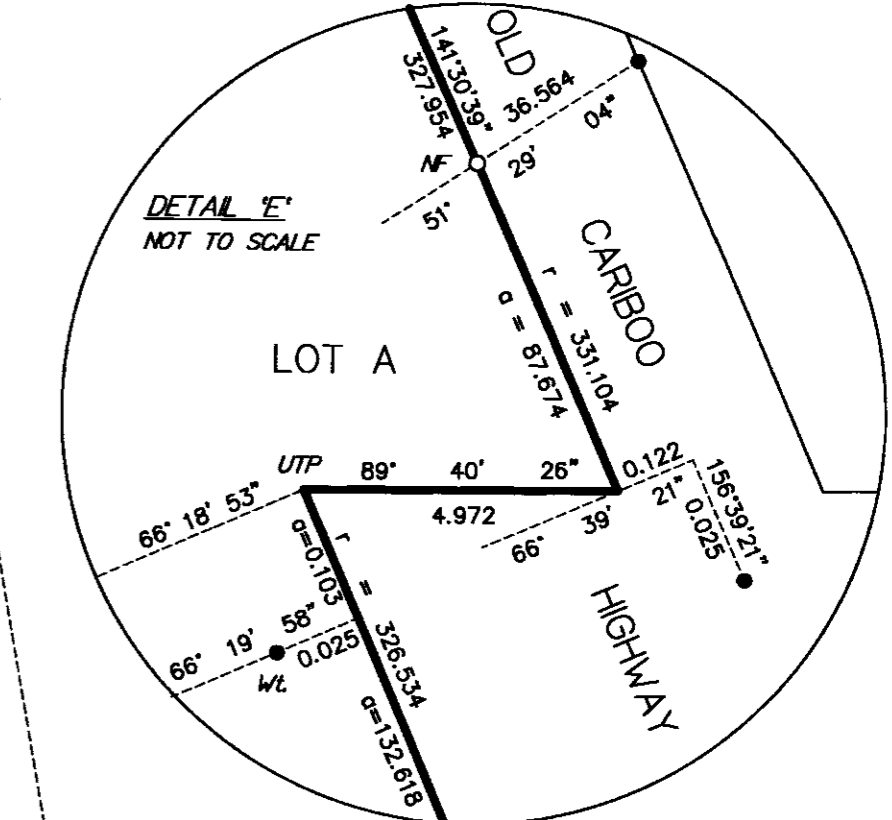
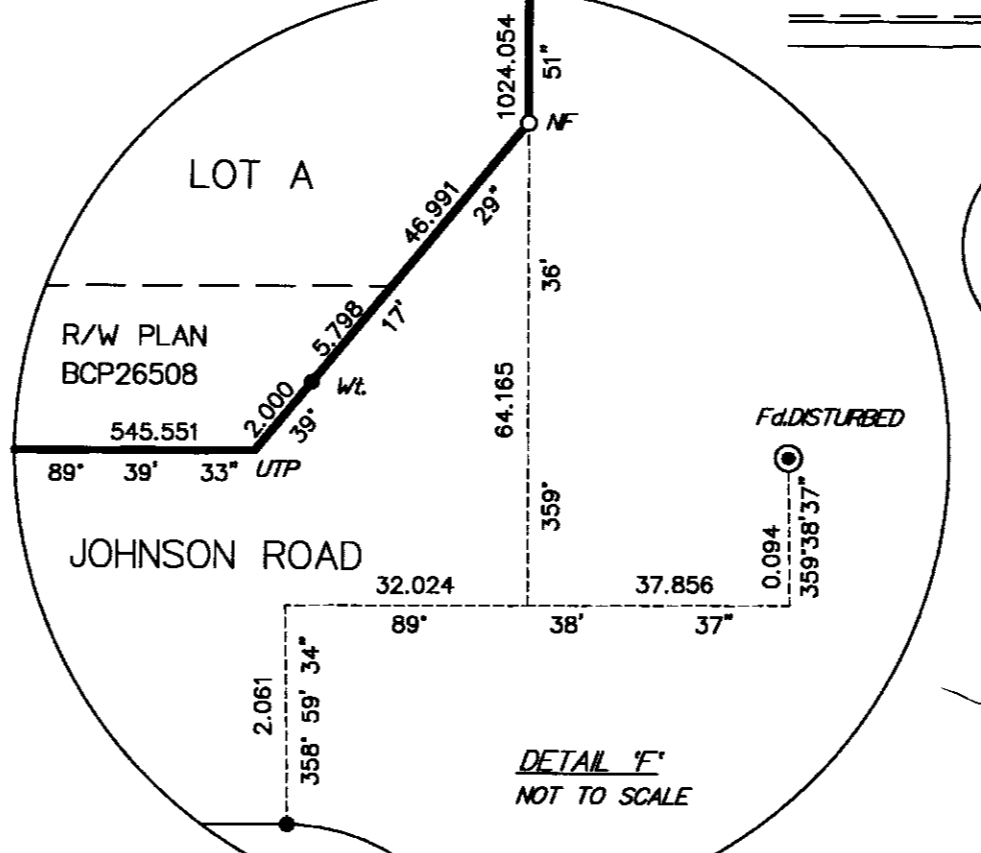
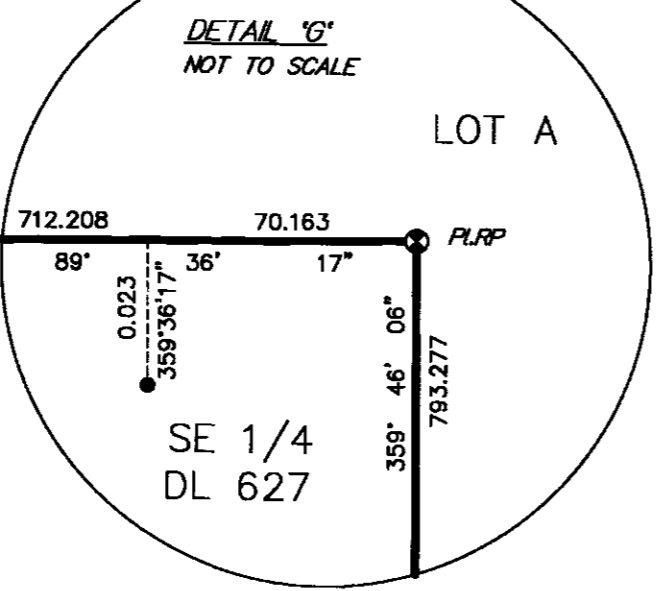
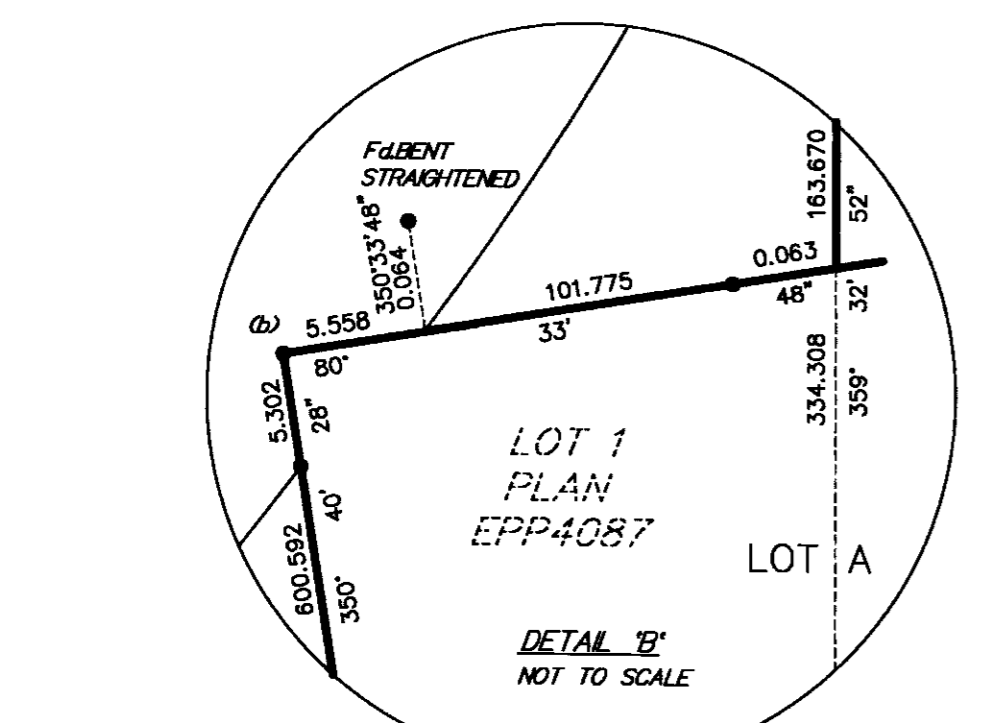
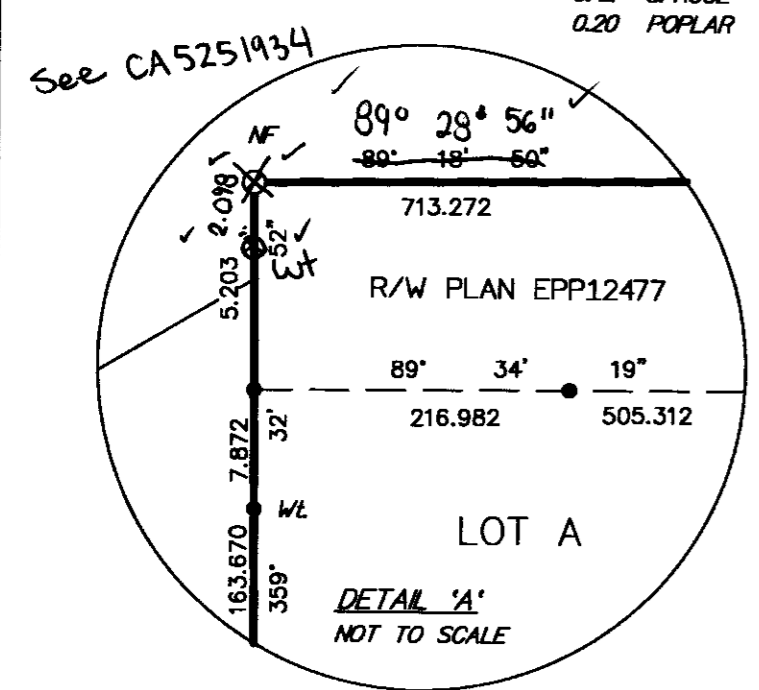
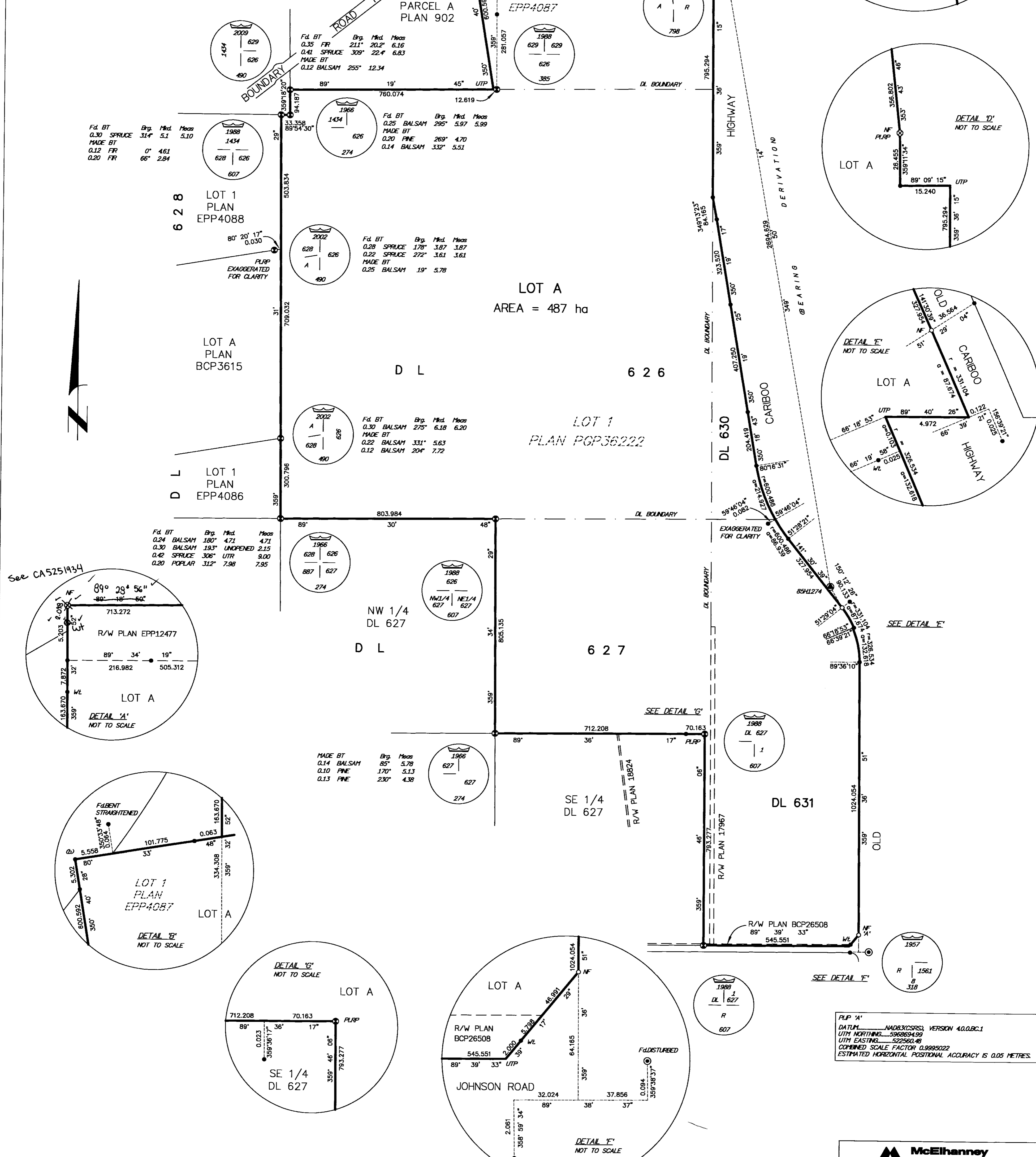
- STANDARD CONCRETE POST FOUND
- STANDARD CAPPED POST FOUND
- STANDARD CAPPED POST PLACED
- STANDARD IRON POST FOUND
- STANDARD IRON POST PLACED
- CONTROL MONUMENT FOUND
- UTP UNABLE TO READ
- UTP UNSUITABLE TO POST
- (b) BURIED

NOTE: THIS PLAN SHOWS ONE OR MORE WITNESS POSTS WHICH ARE NOT SET ON THE TRUE CORNER(S).

BEARINGS TO BEARING TREES ARE MAGNETIC.

PLP
 DATUM NAD83(CSRS), VERSION 4.0.DBC.1
 UTM NORTHING 521171.49
 UTM EASTING 521171.49
 COMBINED SCALE FACTOR 0.9995022
 ESTIMATED HORIZONTAL POSITIONAL ACCURACY IS 0.05 METRES.

Corrected this 10th day of June 2016
 See CA5251934
 C. MacDonald per. W
 Registrar



See CA5251934

THE FIELD SURVEY REPRESENTED BY THIS PLAN WAS COMPLETED ON THE 18th DAY OF FEBRUARY, 2015. SHAUWA C. GOERTZEN, BCLS 798

PLP 'A'
 DATUM NAD83(CSRS), VERSION 4.0.DBC.1
 UTM NORTHING 521171.49
 UTM EASTING 521171.49
 COMBINED SCALE FACTOR 0.9995022
 ESTIMATED HORIZONTAL POSITIONAL ACCURACY IS 0.05 METRES.

McElhanney
 McElhanney Associates
 Land Surveying Ltd.
 Prince George, B.C.
 E-mail: pgmats@mcElhanney.com
 Ph: (250) 561-2229 Fax: (250) 563-1941