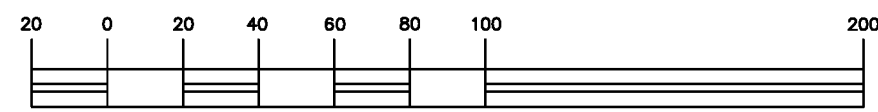


REFERENCE PLAN OF
 STATUTORY RIGHT OF WAY
 IN PARCEL A(102363M) OF
 DISTRICT LOT 2061,
 CARIBOO DISTRICT, EXCEPT PLAN 23178
 PURSUANT TO SECTION 99(1)(e) OF THE LAND TITLE ACT.

PLAN EPP48469

BCGS 93G .097



SCALE 1:2000
 All distances are in metres

THE INTENDED PLOT SIZE OF THIS PLAN IS 560mm IN WIDTH BY
 432mm IN HEIGHT (C SIZE) WHEN PLOTTED AT A SCALE OF 1:2000.

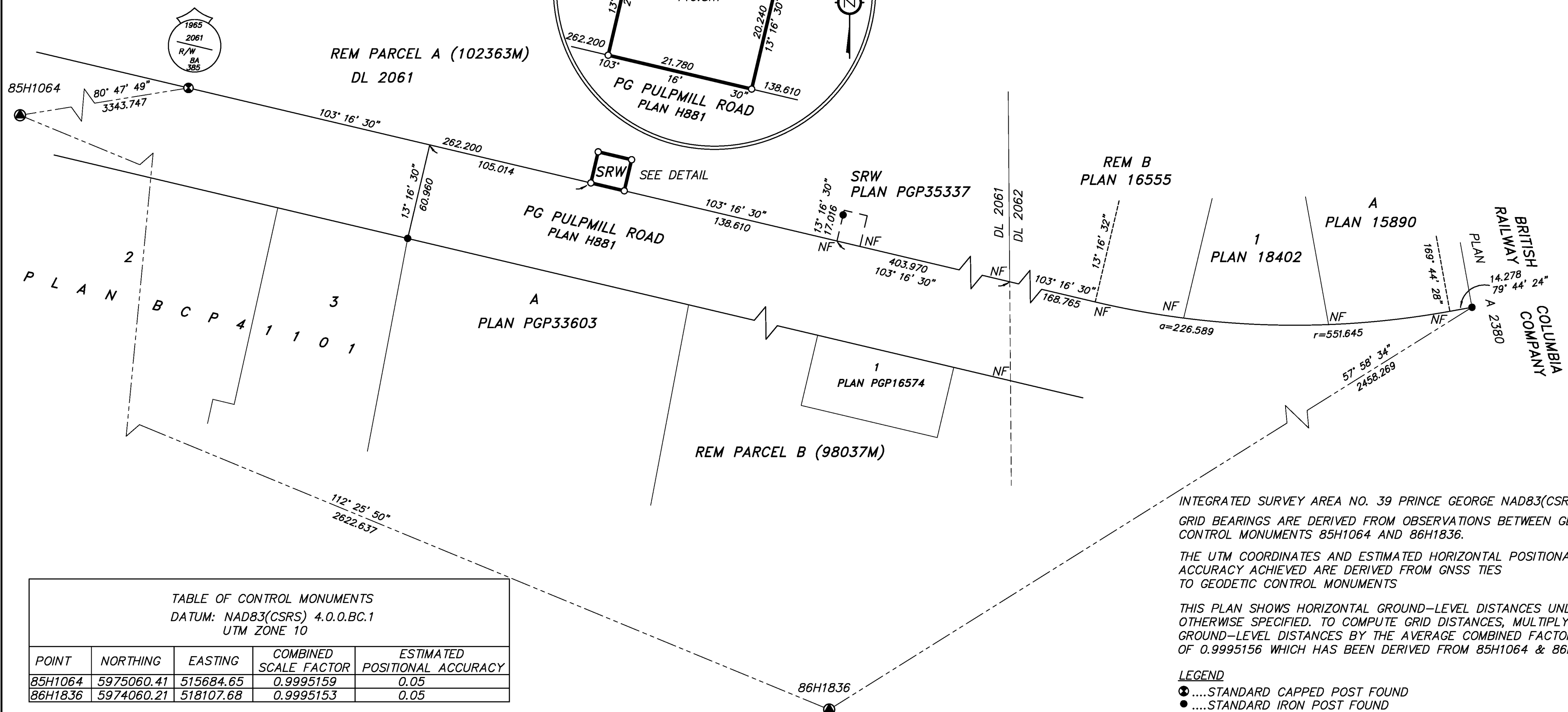
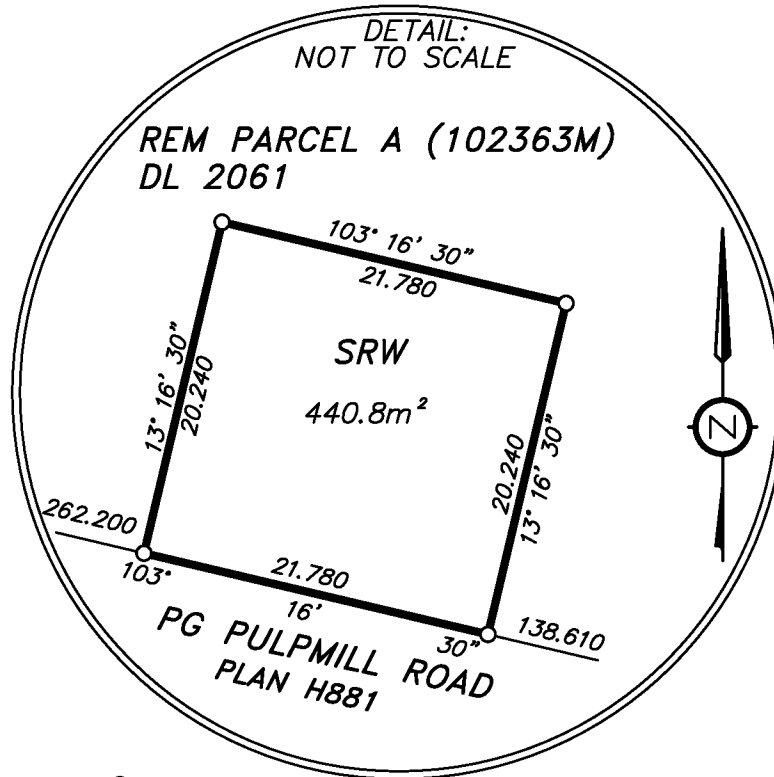


TABLE OF CONTROL MONUMENTS
 DATUM: NAD83(CSRS) 4.0.0.BC.1
 UTM ZONE 10

POINT	NORTHING	EASTING	COMBINED SCALE FACTOR	ESTIMATED POSITIONAL ACCURACY
85H1064	5975060.41	515684.65	0.9995159	0.05
86H1836	5974060.21	518107.68	0.9995153	0.05

INTEGRATED SURVEY AREA NO. 39 PRINCE GEORGE NAD83(CSRS).
 GRID BEARINGS ARE DERIVED FROM OBSERVATIONS BETWEEN GEODETIC CONTROL MONUMENTS 85H1064 AND 86H1836.
 THE UTM COORDINATES AND ESTIMATED HORIZONTAL POSITIONAL ACCURACY ACHIEVED ARE DERIVED FROM GNSS TIES TO GEODETIC CONTROL MONUMENTS

THIS PLAN SHOWS HORIZONTAL GROUND-LEVEL DISTANCES UNLESS OTHERWISE SPECIFIED. TO COMPUTE GRID DISTANCES, MULTIPLY GROUND-LEVEL DISTANCES BY THE AVERAGE COMBINED FACTOR OF 0.9995156 WHICH HAS BEEN DERIVED FROM 85H1064 & 86H1836.

- LEGEND
-STANDARD CAPPED POST FOUND
 -STANDARD IRON POST FOUND
 -STANDARD IRON POST PLACED
 -CONTROL MONUMENT

THIS PLAN LIES WITHIN THE FRASER-FORT GEORGE REGIONAL DISTRICT.
 THE FIELD SURVEY REPRESENTED BY THIS PLAN WAS COMPLETED ON THE 7th DAY OF APRIL, 2015.
 SCOTT RHODES, BCLS 878, CLS.

Allnorth
 Land Surveyors
 #301-7 ST. PAUL STREET WEST,
 KAMLOOPS, BC, V2C 1E9
 TEL: 250-374-5331 FAX: 250-374-5332
 DRAWN BY: SR
 DRAWING NO: 14LS0752 REF
 FILE NO: 14LS0752
 FB: 326 P: