

REFERENCE PLAN OF EASEMENT OVER PART OF LOT 1, DISTRICT LOT 633, CARIBOO DISTRICT, PLAN EPP48236

PLAN EPP48237

PURSUANT TO SECTION 99(1)(e) OF THE LAND TITLE ACT

BCGS 93G.087

INTEGRATED SURVEY AREA No. 39, PRINCE GEORGE, NAD83 (CSRS)

THE INTENDED PLOT SIZE OF THIS PLAN IS 560mm IN WIDTH BY 432mm IN HEIGHT (C SIZE) WHEN PLOTTED AT A SCALE OF 1:500



ALL DISTANCES ARE HORIZONTAL GROUND-LEVEL AND ARE SHOWN IN METRES AND DECIMALS THEREOF, UNLESS OTHERWISE INDICATED.

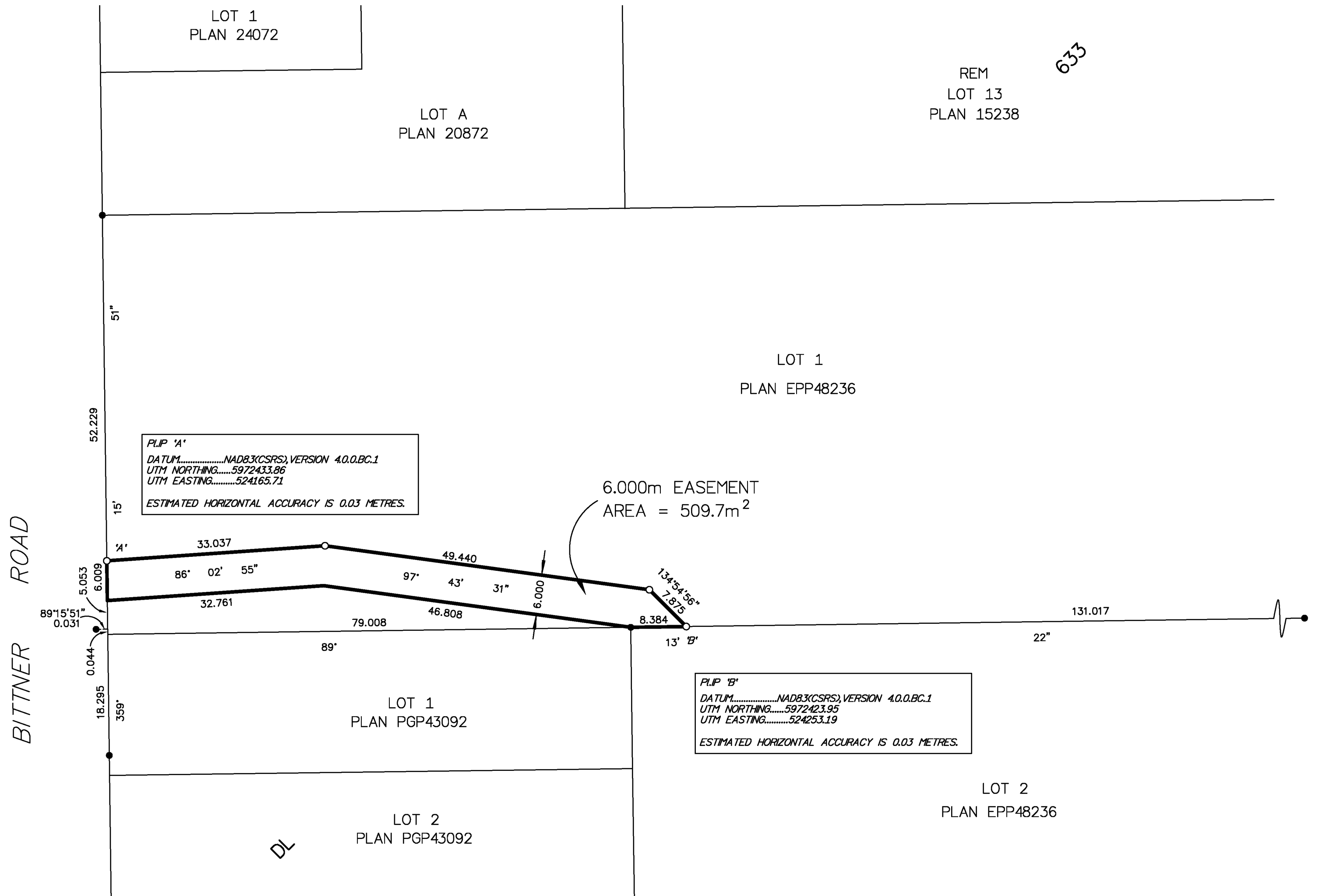
GRID BEARINGS ARE DERIVED FROM PREVIOUSLY INTEGRATED PLAN EPP48236

THE UTM COORDINATES AND ESTIMATED HORIZONTAL ACCURACY ACHIEVED HAVE BEEN DERIVED FROM GNSS OBSERVATIONS TO GEODETIC CONTROL MONUMENTS 86H1834

THIS PLAN SHOWS HORIZONTAL GROUND-LEVEL DISTANCES, UNLESS OTHERWISE SPECIFIED. TO COMPUTE GRID DISTANCES, MULTIPLY GROUND-LEVEL DISTANCES BY THE AVERAGE COMBINED FACTOR OF 0.9995032 WHICH HAS BEEN DERIVED FROM 86H1834 AND 85H1279.

LEGEND

- STANDARD IRON POST FOUND
- STANDARD IRON POST PLACED



PLP 'A'
 DATUM.....NAD83(CSRS),VERSION 4.0.0.BC.1
 UTM NORTHING.....5972433.86
 UTM EASTING.....524165.71
 ESTIMATED HORIZONTAL ACCURACY IS 0.03 METRES.

PLP 'B'
 DATUM.....NAD83(CSRS),VERSION 4.0.0.BC.1
 UTM NORTHING.....5972423.95
 UTM EASTING.....524253.19
 ESTIMATED HORIZONTAL ACCURACY IS 0.03 METRES.

THIS PLAN LIES WITHIN THE JURISDICTION OF THE APPROVING OFFICER FOR THE CITY OF PRINCE GEORGE.
 CPG File: SD100456

THE FIELD SURVEY REPRESENTED BY THIS PLAN WAS COMPLETED ON THE 7th DAY OF JANUARY, 2015.
 SHAUNA C. GOERTZEN, BCLS 798

THIS PLAN LIES WITHIN THE REGIONAL DISTRICT OF FRASER - FORT GEORGE.

McElhanney
 McElhanney Associates
 Land Surveying Ltd.
 Prince George, B.C.
 E-mail: pgmats@mcelhanney.com
 Ph: (250) 561-2229 Fax: (250) 563-1941

DL- 633	File No. - 6241-E
CPG File No. SD100456	