

# SUBDIVISION PLAN OF LOT 14, DISTRICT LOT 633, PLAN 15238 AND THE SOUTH 1/2 OF THE SOUTH WEST 1/4 OF DISTRICT LOT 633 EXCEPT PLANS 9298, 9397, 11162, 12216, 15238, 27930, PGP37048, PGP37850 AND PGP41237, CARIBOO DISTRICT

PLAN EPP48236

BCGS 93G.087 AND 93G.097

INTEGRATED SURVEY AREA No. 39, PRINCE GEORGE, NAD83 (CSRS)  
 THE INTENDED PLOT SIZE OF THIS PLAN IS 560mm IN WIDTH BY 432mm IN HEIGHT (C SIZE) WHEN PLOTTED AT A SCALE OF 1:1000



ALL DISTANCES ARE HORIZONTAL GROUND-LEVEL AND ARE SHOWN IN METRES AND DECIMALS THEREOF, UNLESS OTHERWISE INDICATED.

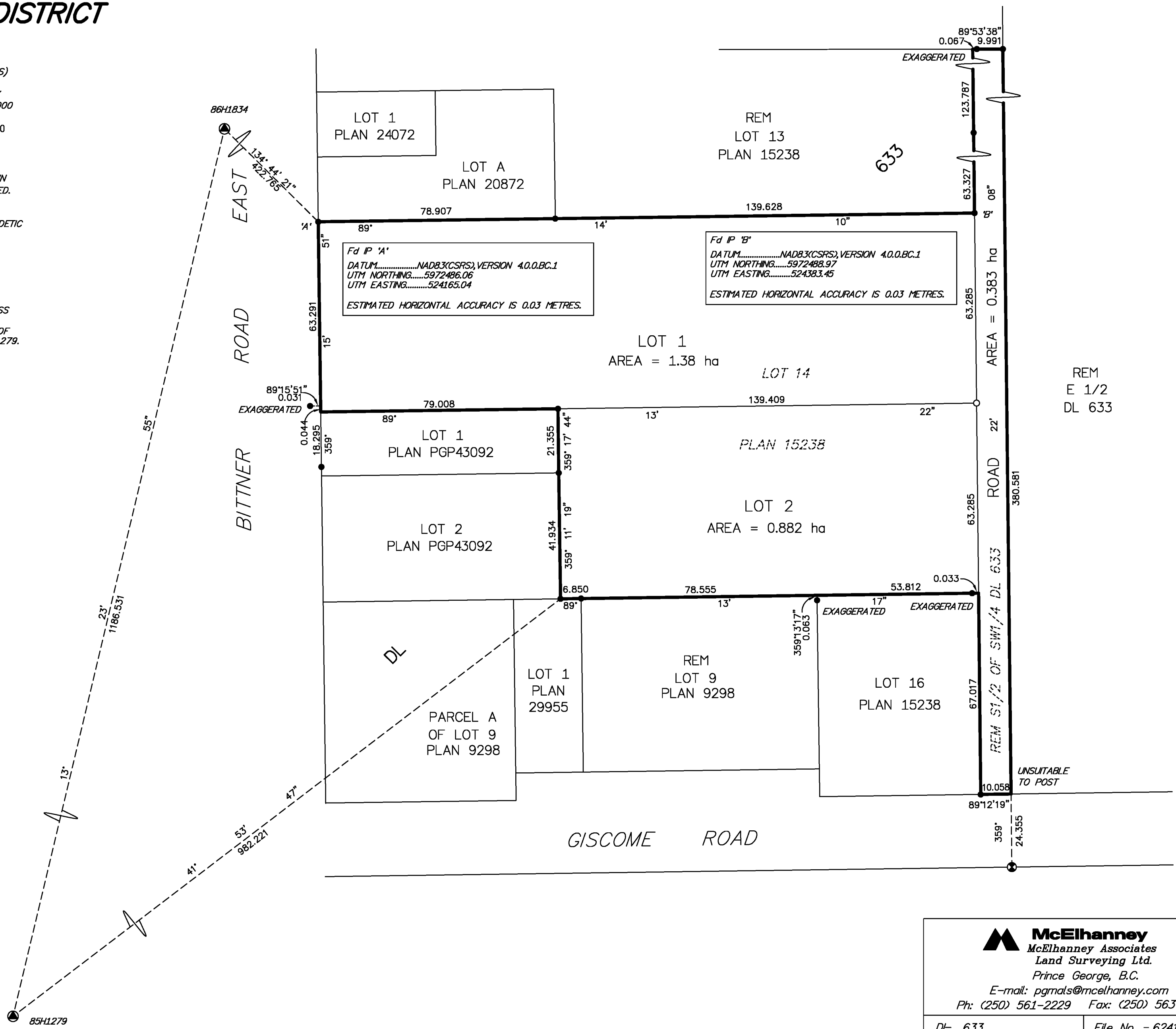
GRID BEARINGS ARE DERIVED FROM GNSS OBSERVATIONS TO GEODETIC CONTROL MONUMENTS 86H1834 AND 85H1279

THE UTM COORDINATES AND ESTIMATED HORIZONTAL ACCURACY ACHIEVED HAVE BEEN DERIVED FROM GNSS OBSERVATIONS TO GEODETIC CONTROL MONUMENTS 86H1834 AND 85H1279

THIS PLAN SHOWS HORIZONTAL GROUND-LEVEL DISTANCES, UNLESS OTHERWISE SPECIFIED. TO COMPUTE GRID DISTANCES, MULTIPLY GROUND-LEVEL DISTANCES BY THE AVERAGE COMBINED FACTOR OF 0.9995032 WHICH HAS BEEN DERIVED FROM 86H1834 AND 85H1279.

### LEGEND

- ⊙ STANDARD CAPPED POST FOUND
- STANDARD IRON POST FOUND
- STANDARD IRON POST PLACED
- ⊙ CONTROL MONUMENT FOUND



THIS PLAN LIES WITHIN THE JURISDICTION OF THE APPROVING OFFICER FOR THE CITY OF PRINCE GEORGE. CPG File: SD100456

THE FIELD SURVEY REPRESENTED BY THIS PLAN WAS COMPLETED ON THE 7th DAY OF JANUARY, 2015. SHAUNA C. GOERTZEN, BCLS 798

THIS PLAN LIES WITHIN THE REGIONAL DISTRICT OF FRASER - FORT GEORGE.

**McElhanney**  
 McElhanney Associates  
 Land Surveying Ltd.  
 Prince George, B.C.  
 E-mail: pgmats@mcelhanney.com  
 Ph: (250) 561-2229 Fax: (250) 563-1941

DL- 633	File No. - 6241-S
CPG File No. SD100456	