

**EXPLANATORY PLAN OF EASEMENT OVER PART OF
LOT B, DISTRICT LOT 9261, CARIBOO DISTRICT,
PLAN EPP42878.**

PLAN EPP48147

PURSUANT TO SECTION 99(1)(e) OF THE LAND TITLE ACT.

BCGS 93G.087

INTEGRATED SURVEY AREA No. 39, PRINCE GEORGE, NAD83 (CSRS) 4.0.0.BC.1

THE INTENDED PLOT SIZE OF THIS PLAN IS 432mm IN WIDTH BY 560mm IN HEIGHT (C SIZE) WHEN PLOTTED AT A SCALE OF 1:250



ALL DISTANCES ARE SHOWN IN METRES AND DECIMALS THEREOF, UNLESS OTHERWISE INDICATED.

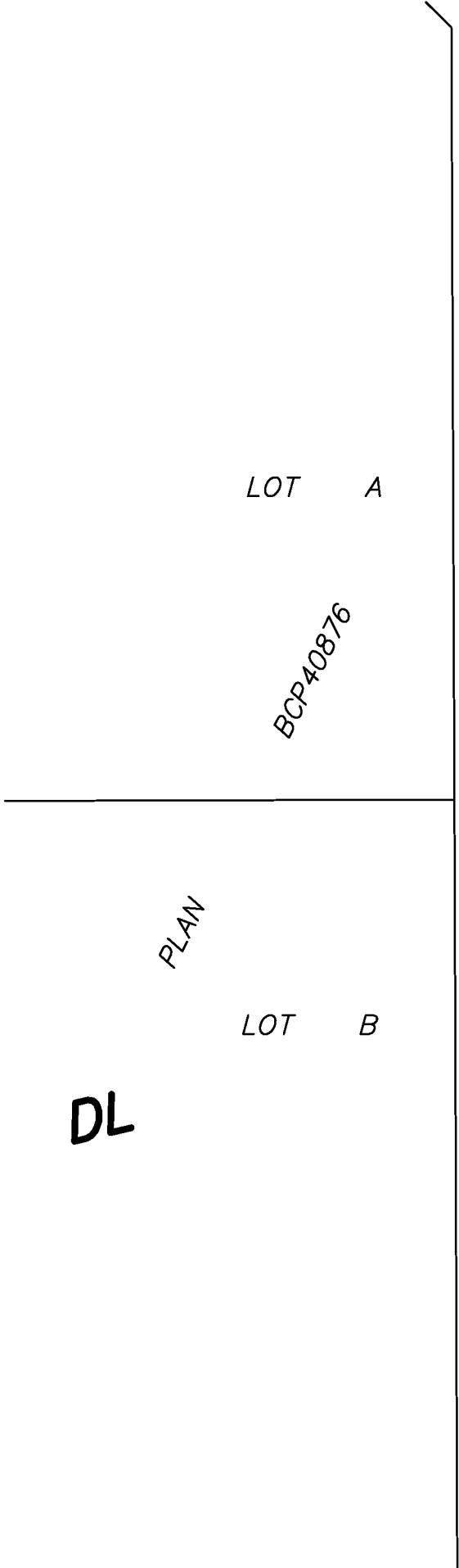
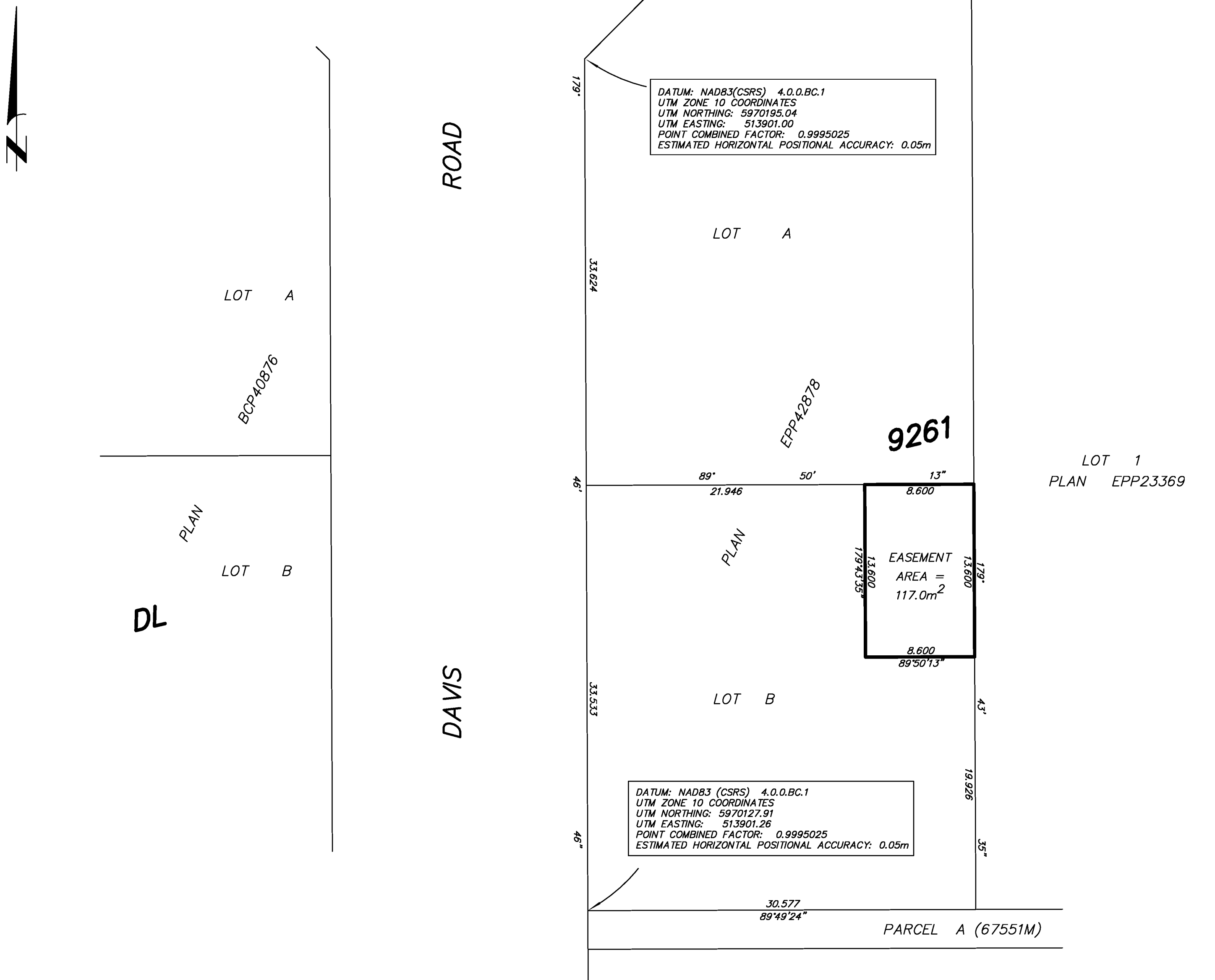
THIS PLAN SHOWS HORIZONTAL GROUND-LEVEL DISTANCES, UNLESS OTHERWISE SPECIFIED. TO COMPUTE GRID DISTANCES, MULTIPLY GROUND-LEVEL DISTANCES BY THE AVERAGE COMBINED FACTOR OF 0.9995025 WHICH HAS BEEN DERIVED FROM PREVIOUSLY INTEGRATED PLAN EPP23369.

NOTE: THE UTM COORDINATES AND ESTIMATED HORIZONTAL POSITIONAL ACCURACY ARE DERIVED FROM PLAN EPP42878.

NOTE: GRID BEARINGS ARE DERIVED FROM PREVIOUSLY INTEGRATED PLAN EPP42878.

CHARELLA

DRIVE



THIS PLAN IS BASED ON THE FOLLOWING LAND TITLE AND SURVEY AUTHORITY OF BC RECORDS: PLAN EPP42878 PLAN EPP23369
DARREN KENT, BCLS 904
7th DAY OF APRIL, 2015

THIS PLAN LIES WITHIN THE REGIONAL DISTRICT OF FRASER – FORT GEORGE.

LOT 35
PLAN 11361

McElhanney
McElhanney Associates
Land Surveying Ltd.
Prince George, B.C.
E-mail: pgmats@mcelhanney.com
Ph: (250) 561-2229 Fax: (250) 563-1941

DL - 9261	File No. - 6229-E
CPG File No. SD100455	