

**REFERENCE PLAN OF CONSOLIDATION OF  
LOT B, DISTRICT LOT 485, CARIBOO DISTRICT,  
PLAN EPP20645 AND PARCEL A, DISTRICT LOT 485,  
CARIBOO DISTRICT, PLAN EPP48144.**

**PLAN EPP48145**

PURSUANT TO SECTION 100(1)(b) OF THE LAND TITLE ACT.

BCGS 93G.087

THIS PLAN LIES WITHIN INTEGRATED SURVEY  
AREA No. 39, PRINCE GEORGE, NAD83 (CSRS) 4.0.0.BC.1

THE INTENDED PLOT SIZE OF THIS PLAN IS 432mm IN WIDTH BY  
560mm IN HEIGHT (C SIZE) WHEN PLOTTED AT A SCALE OF 1:1000



ALL DISTANCES ARE SHOWN IN METRES AND  
DECIMALS THEREOF, UNLESS OTHERWISE INDICATED.

GRID BEARINGS ARE DERIVED FROM PREVIOUSLY  
INTEGRATED PLAN EPP20645.

NOTE: SOME POSTS AND LINES MAY BE EXAGGERATED FOR CLARITY.

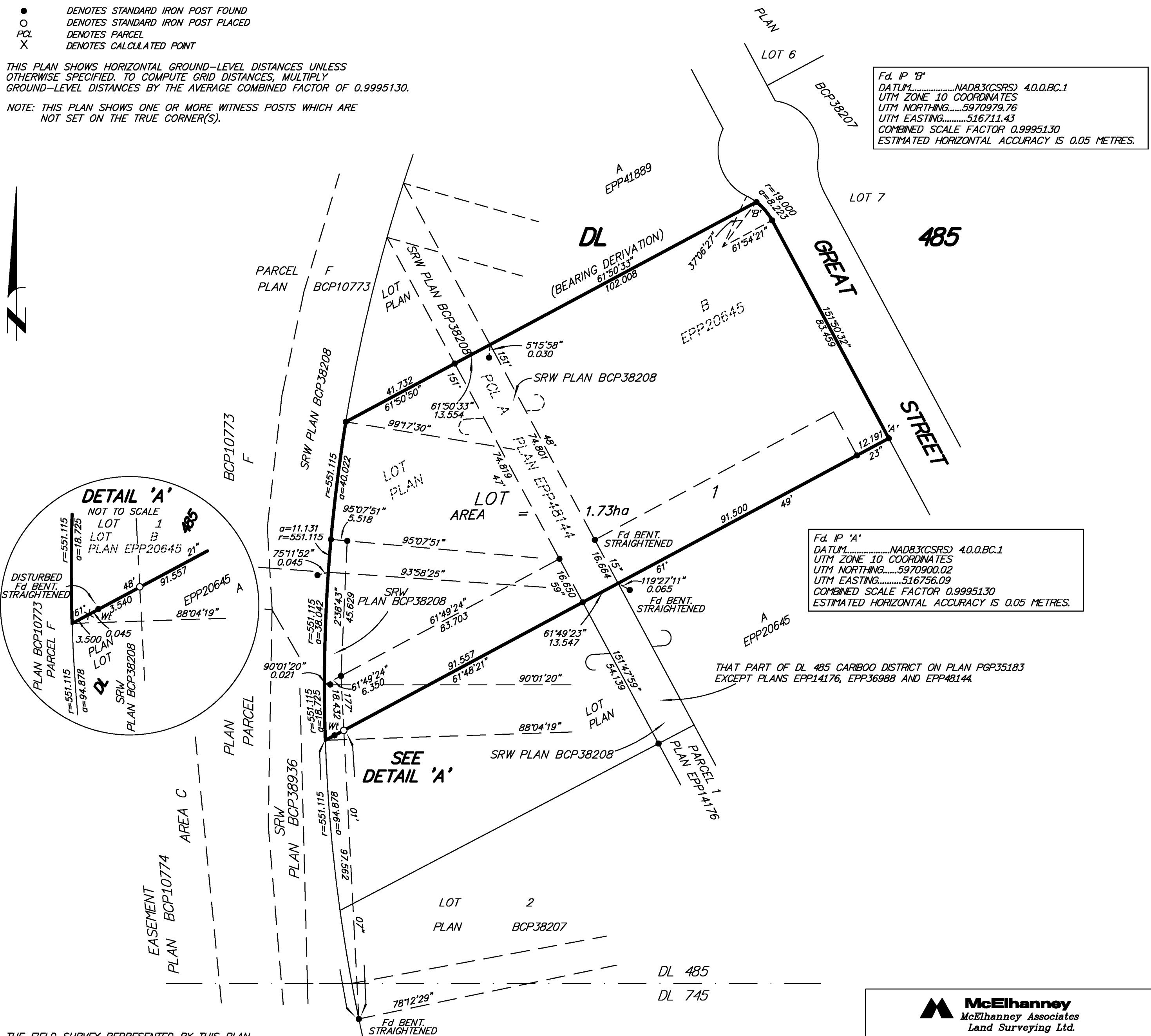
NOTE: GEOREFERENCED COORDINATES DERIVED FROM PLAN EPP20645.

**LEGEND**

- DENOTES STANDARD IRON POST FOUND
- DENOTES STANDARD IRON POST PLACED
- PCL DENOTES PARCEL
- X DENOTES CALCULATED POINT

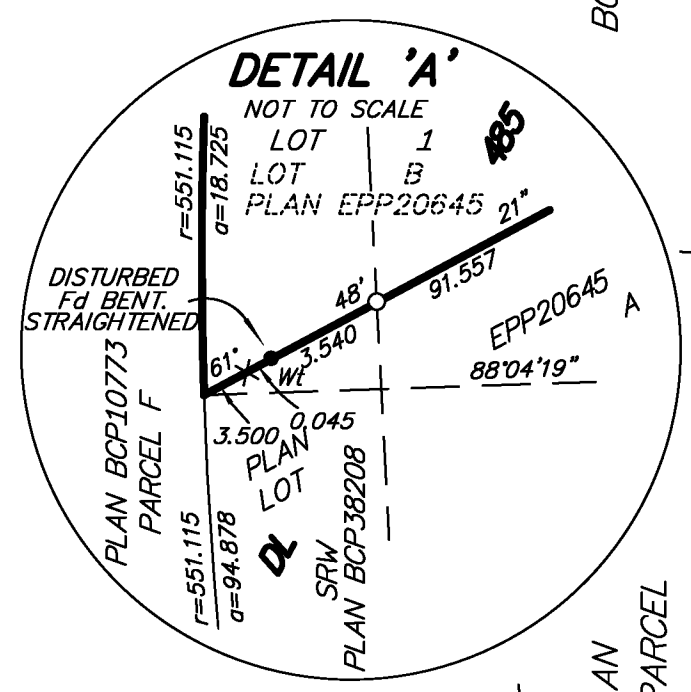
THIS PLAN SHOWS HORIZONTAL GROUND-LEVEL DISTANCES UNLESS  
OTHERWISE SPECIFIED. TO COMPUTE GRID DISTANCES, MULTIPLY  
GROUND-LEVEL DISTANCES BY THE AVERAGE COMBINED FACTOR OF 0.9995130.

NOTE: THIS PLAN SHOWS ONE OR MORE WITNESS POSTS WHICH ARE  
NOT SET ON THE TRUE CORNER(S).



Fd. IP 'B'  
DATUM.....NAD83(CSRS) 4.0.0.BC.1  
UTM ZONE 10 COORDINATES  
UTM NORTHING.....5970979.76  
UTM EASTING.....516711.43  
COMBINED SCALE FACTOR 0.9995130  
ESTIMATED HORIZONTAL ACCURACY IS 0.05 METRES.

Fd. IP 'A'  
DATUM.....NAD83(CSRS) 4.0.0.BC.1  
UTM ZONE 10 COORDINATES  
UTM NORTHING.....5970900.02  
UTM EASTING.....516756.09  
COMBINED SCALE FACTOR 0.9995130  
ESTIMATED HORIZONTAL ACCURACY IS 0.05 METRES.



THAT PART OF DL 485 CARIBOO DISTRICT ON PLAN PGP35183  
EXCEPT PLANS EPP14176, EPP36988 AND EPP48144.

THE FIELD SURVEY REPRESENTED BY THIS PLAN  
WAS COMPLETED ON THE 9th DAY OF DECEMBER, 2014.  
DARREN KENT, BCLS 904

THIS PLAN LIES WITHIN THE REGIONAL DISTRICT OF FRASER - FORT GEORGE.

**McElhanney**  
McElhanney Associates  
Land Surveying Ltd.  
Prince George, B.C.  
E-mail: pgmals@mcelhanney.com  
Ph: (250) 561-2229 Fax: (250) 563-1941

DL - 485 File No. - 6231-C-B