

REFERENCE PLAN OF STATUTORY RIGHT OF WAY OVER PART OF THAT PART OF DISTRICT LOT 485, CARIBOO DISTRICT, ON PLAN PGP35183, EXCEPT PLANS EPP14176 AND EPP36988.

PLAN EPP48144

PURSUANT TO SECTION 34 OF THE BRITISH COLUMBIA RAILWAY ACT (RSBC 1996) CHAPTER 36
AND SECTION 114 OF THE LAND TITLE ACT.

BCGS 93G.087

THE INTENDED PLOT SIZE OF THIS PLAN IS 432mm IN WIDTH BY
280mm IN HEIGHT (B SIZE) WHEN PLOTTED AT A SCALE OF 1:1250



ALL DISTANCES ARE SHOWN IN METRES AND
DECIMALS THEREOF, UNLESS OTHERWISE INDICATED.

THIS PLAN LIES WITHIN INTEGRATED SURVEY
AREA No. 39, PRINCE GEORGE, NAD83 (CSRS) 4.0.0.BC.1

GRID BEARINGS ARE DERIVED FROM PREVIOUSLY
INTEGRATED PLAN EPP20645.

NOTE: SOME POSTS AND LINES MAY BE EXAGGERATED FOR CLARITY.

NOTE: GEOREFERENCED COORDINATES DERIVED FROM PLAN EPP20645.

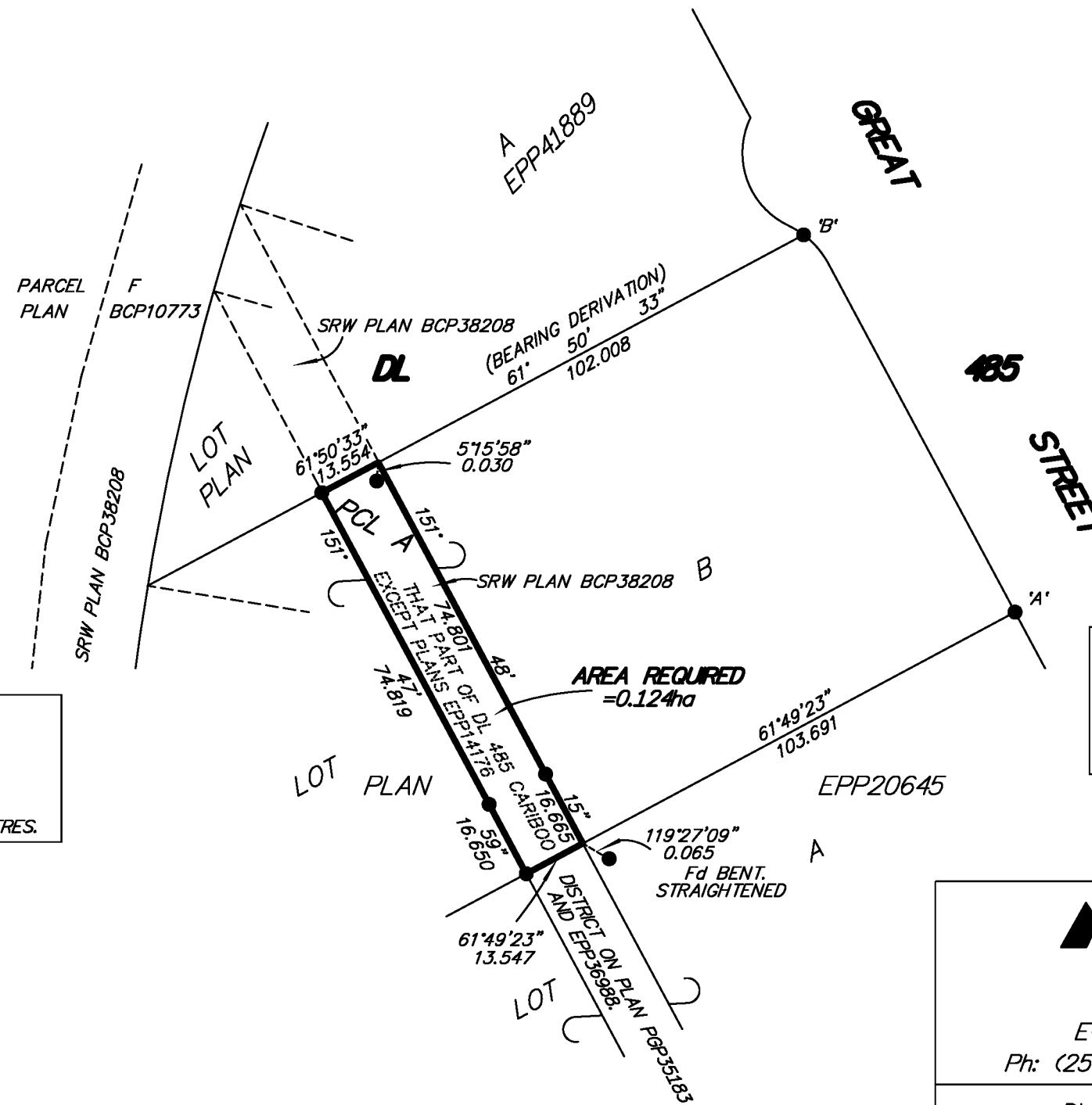
THIS PLAN SHOWS HORIZONTAL GROUND-LEVEL DISTANCES UNLESS
OTHERWISE SPECIFIED. TO COMPUTE GRID DISTANCES, MULTIPLY
GROUND-LEVEL DISTANCES BY THE AVERAGE COMBINED FACTOR
OF 0.9995130.

LEGEND

- DENOTES STANDARD IRON POST FOUND
- PCL DENOTES PARCEL

OIP 'B'
DATUM.....NAD83(CSRS) 4.0.0.BC.1
UTM ZONE 10 COORDINATES
UTM NORTHING.....5970979.76
UTM EASTING.....516711.43
COMBINED SCALE FACTOR 0.9995130
ESTIMATED HORIZONTAL ACCURACY IS 0.05 METRES.

OIP 'A'
DATUM.....NAD83(CSRS) 4.0.0.BC.1
UTM ZONE 10 COORDINATES
UTM NORTHING.....5970900.02
UTM EASTING.....516756.09
COMBINED SCALE FACTOR 0.9995130
ESTIMATED HORIZONTAL ACCURACY IS 0.05 METRES.



THE FIELD SURVEY REPRESENTED BY THIS PLAN
WAS COMPLETED ON THE 9th DAY OF DECEMBER, 2014.
DARREN KENT, BCLS 904

THIS PLAN LIES WITHIN THE REGIONAL DISTRICT OF FRASER - FORT GEORGE.

McElhanney
McElhanney Associates
Land Surveying Ltd.
Prince George, B.C.

E-mail: pgmals@mcelhanney.com
Ph: (250) 561-2229 Fax: (250) 563-1941

DL - 485

File No. - 6231-SRW-B