

# REFERENCE PLAN OF CONSOLIDATION OF LOT B, PLAN EPP48139 AND LOT 2, PLAN 22956, ALL IN DISTRICT LOT 343, CARIBOO DISTRICT.

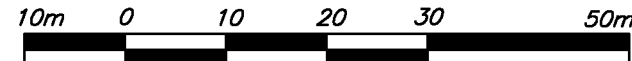
PLAN EPP48140

PURSUANT TO SECTION 100(1)(b) OF THE LAND TITLE ACT.

BCGS 93G.097

INTEGRATED SURVEY AREA No. 39, PRINCE GEORGE, NAD83 (CSRS) 4.0.0.BC.1

THE INTENDED PLOT SIZE OF THIS PLAN IS 560mm IN WIDTH BY 432mm IN HEIGHT (C SIZE) WHEN PLOTTED AT A SCALE OF 1:750



ALL DISTANCES ARE SHOWN IN METRES AND DECIMALS THEREOF, UNLESS OTHERWISE INDICATED.

**LEGEND**

- ⊙ DENOTES CONTROL MONUMENT FOUND
- DENOTES STANDARD IRON POST FOUND

NOTE: THIS PLAN SHOWS ONE OR MORE WITNESS POSTS WHICH ARE NOT SET ON THE TRUE CORNER(S).

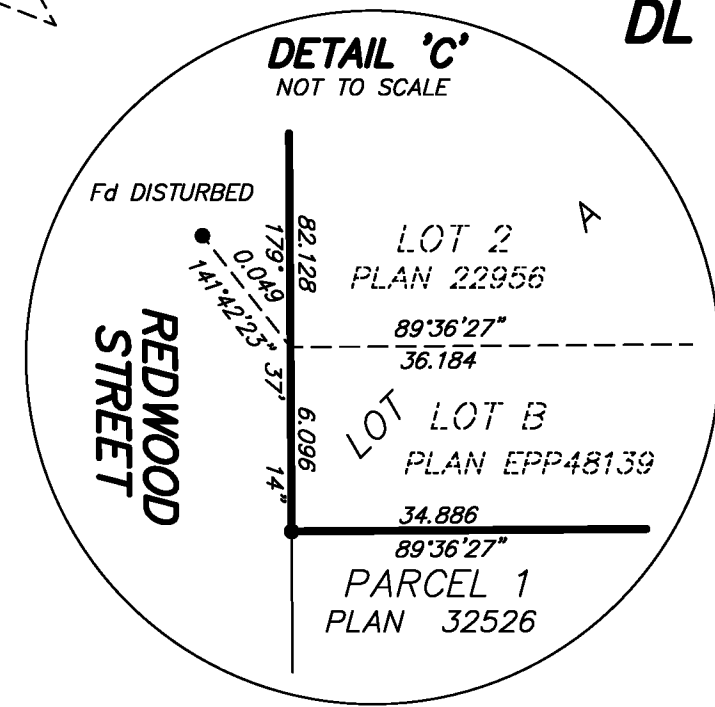
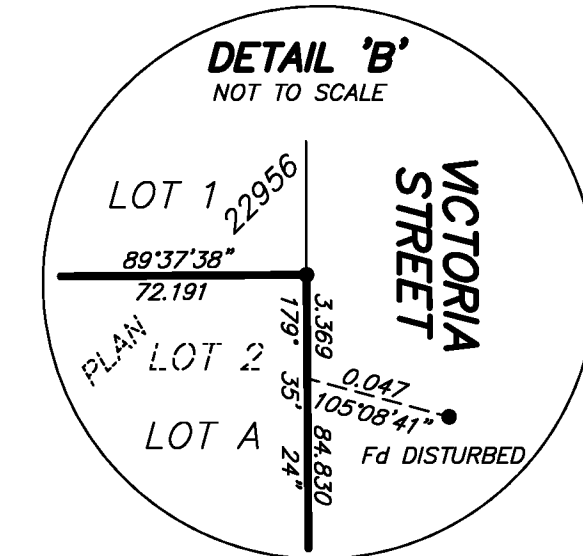
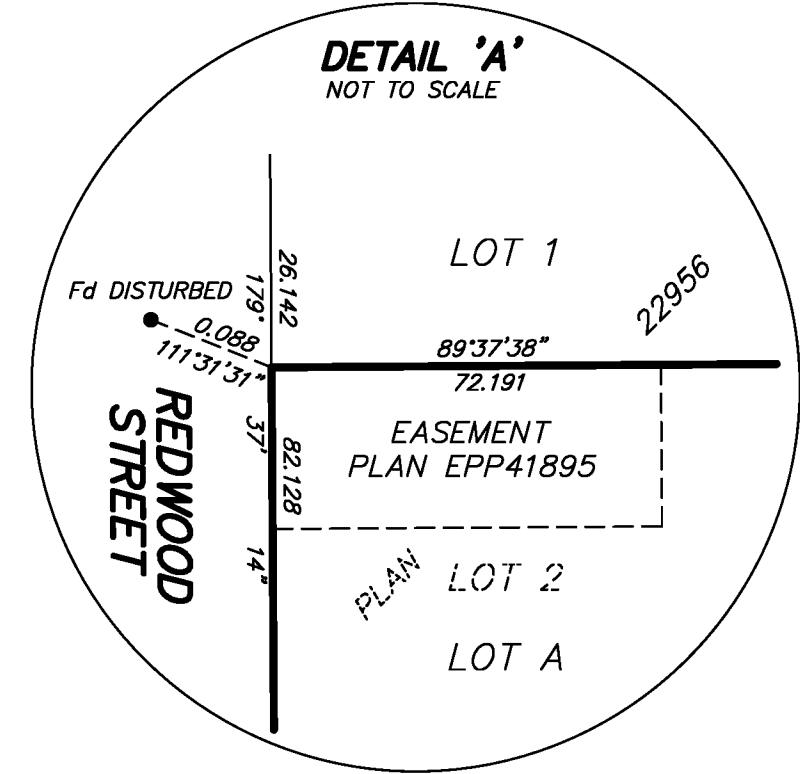
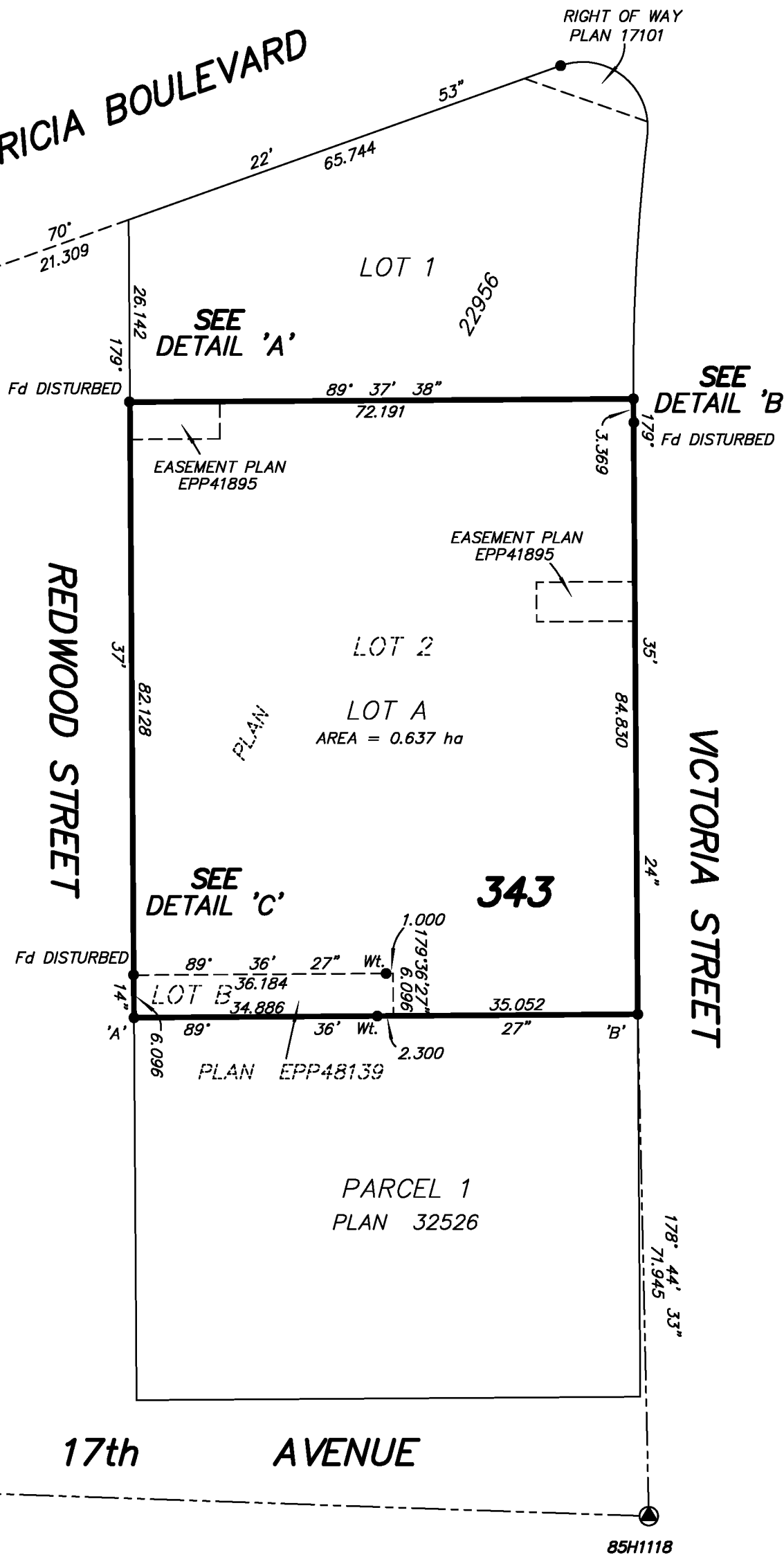
GRID BEARINGS ARE DERIVED FROM GEODETIC CONTROL MONUMENTS 85H1118 AND 85H1116.

THE UTM COORDINATES AND ESTIMATED HORIZONTAL ACCURACY ACHIEVED HAVE BEEN DERIVED FROM CONVENTIONAL SURVEY OBSERVATIONS TO GEODETIC CONTROL MONUMENTS 85H1118 AND 85H1116.

THIS PLAN SHOWS HORIZONTAL GROUND-LEVEL DISTANCES, UNLESS OTHERWISE SPECIFIED. TO COMPUTE GRID DISTANCES, MULTIPLY GROUND-LEVEL DISTANCES BY THE AVERAGE COMBINED FACTOR OF 0.9995156 WHICH HAS BEEN DERIVED FROM 85H1118 AND 85H1116.



PATRICIA BOULEVARD



Fd IP 'A'  
 DATUM.....NAD83(CSRS) 4.0.0.BC.1  
 UTM ZONE 10  
 UTM NORTHING.....5973426.92  
 UTM EASTING.....516001.39  
 ESTIMATED HORIZONTAL ACCURACY IS 0.03 METRES.

Fd IP 'B'  
 DATUM.....NAD83(CSRS) 4.0.0.BC.1  
 UTM ZONE 10  
 UTM NORTHING.....5973427.42  
 UTM EASTING.....516073.59  
 ESTIMATED HORIZONTAL ACCURACY IS 0.03 METRES.

THE FIELD SURVEY REPRESENTED BY THIS PLAN WAS COMPLETED ON THE 21st DAY OF OCTOBER, 2014. DARREN KENT, BCLS 904

THIS PLAN LIES WITHIN THE REGIONAL DISTRICT OF FRASER - FORT GEORGE.

**McElhanney**  
 McElhanney Associates  
 Land Surveying Ltd.  
 Prince George, B.C.  
 E-mail: pgmals@mcElhanney.com  
 Ph: (250) 561-2229 Fax: (250) 563-1941

DL 343	File No. 6273-CON
--------	-------------------