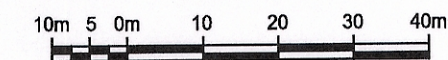


EPP4755

# REFERENCE PLAN OF EASEMENT OVER PART OF LOT 30, DL 4040, CARIBOO DISTRICT, PLAN 1298, EXCEPT PLANS 9202 AND 11950

Pursuant to Section 99 of the Land Title Act

BCGS 93G.097



All distances are in metres

The intended plot size of this plan is 432 mm in width  
by 280 mm in height when plotted at scale 1:1000  
(use B size sheet)

## LEGEND

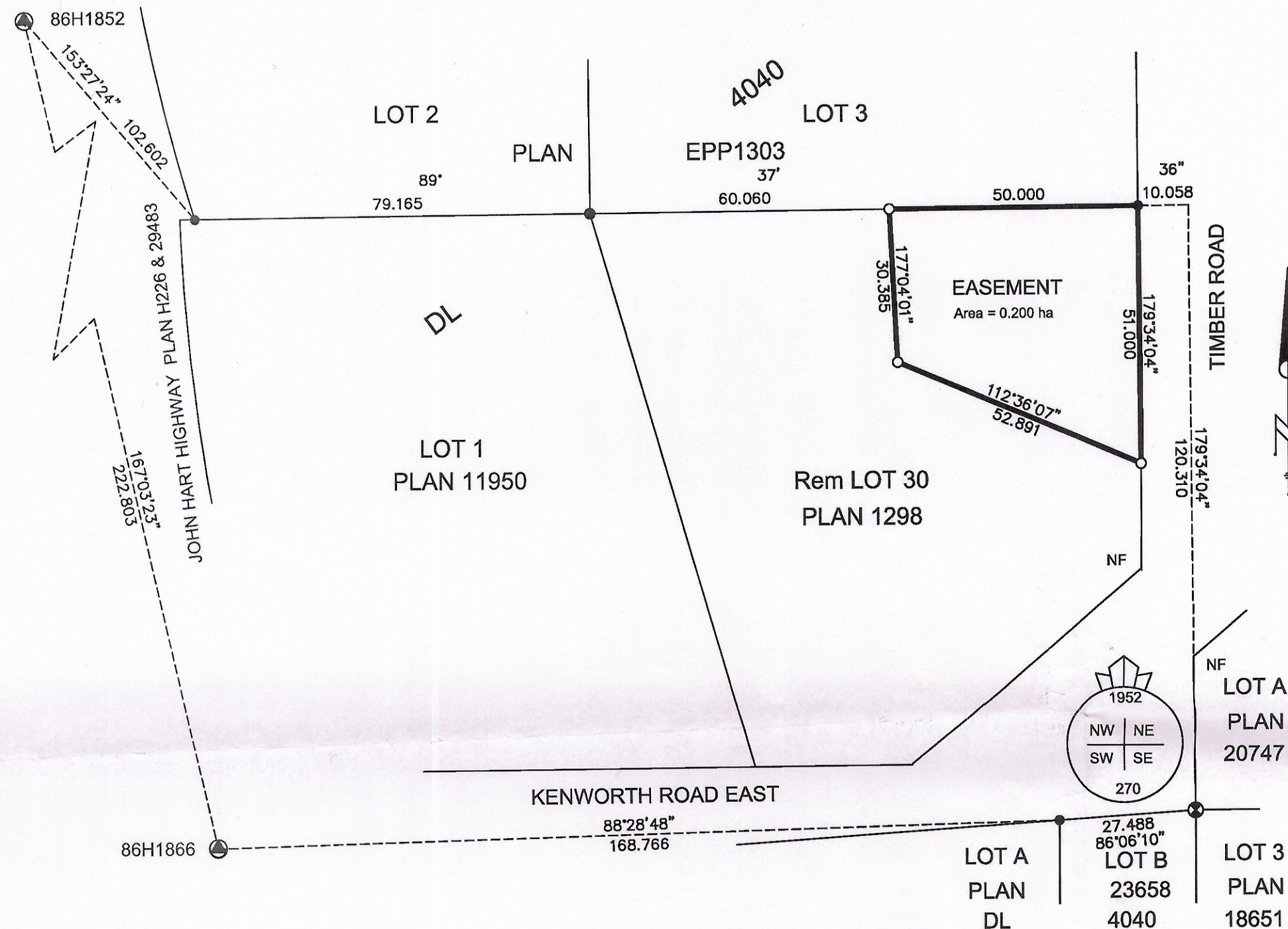
Grid bearings are derived from observations  
between control monuments 86H1852 and 86H1866  
Integrated Survey Area Number 39, City of  
Prince George, NAD 83(CSRS)

This plan shows ground level measured distances  
Prior to computation of UTM coordinates  
multiply by combined factor of 0.9995031

- Denotes Standard Iron Post Found
- Denotes Standard Iron Post Placed
- ⊙ Denotes Control Monument
- ⊗ Denotes Standard Capped Post Found

This plan lies within the Regional District of Fraser - Fort George

The field survey represented by this plan  
was completed by Richard E. Gook, BCLS  
on the 27th day of October, 2009



R.E. GOOK & ASSOCIATES  
B.C. & CANADA LAND SURVEYORS  
886 VANCOUVER STREET  
PRINCE GEORGE, B.C. V2L 2P5  
PHONE: 250-564-4242  
FAX: 250-564-5343  
FILE:08-0513APG  
regook@northernsurveys.com