

# STATUTORY RIGHT OF WAY PLAN OVER A PORTION OF LOT 1, DISTRICT LOT 4047, CARIBOO DISTRICT, PLAN EPP26104

PLAN EPP46961

PURSUANT TO SECTION 113 OF THE LAND TITLE ACT.

BCGS 93G.097

INTEGRATED SURVEY AREA No. 39, PRINCE GEORGE, NAD83 (CSRS)



THE INTENDED PLOT SIZE OF THIS PLAN IS 560mm IN WIDTH BY 432mm IN HEIGHT (C SIZE) WHEN PLOTTED AT A SCALE OF 1:400

ALL DISTANCES ARE HORIZONTAL GROUND-LEVEL AND ARE SHOWN IN METRES AND DECIMALS THEREOF, UNLESS OTHERWISE INDICATED.

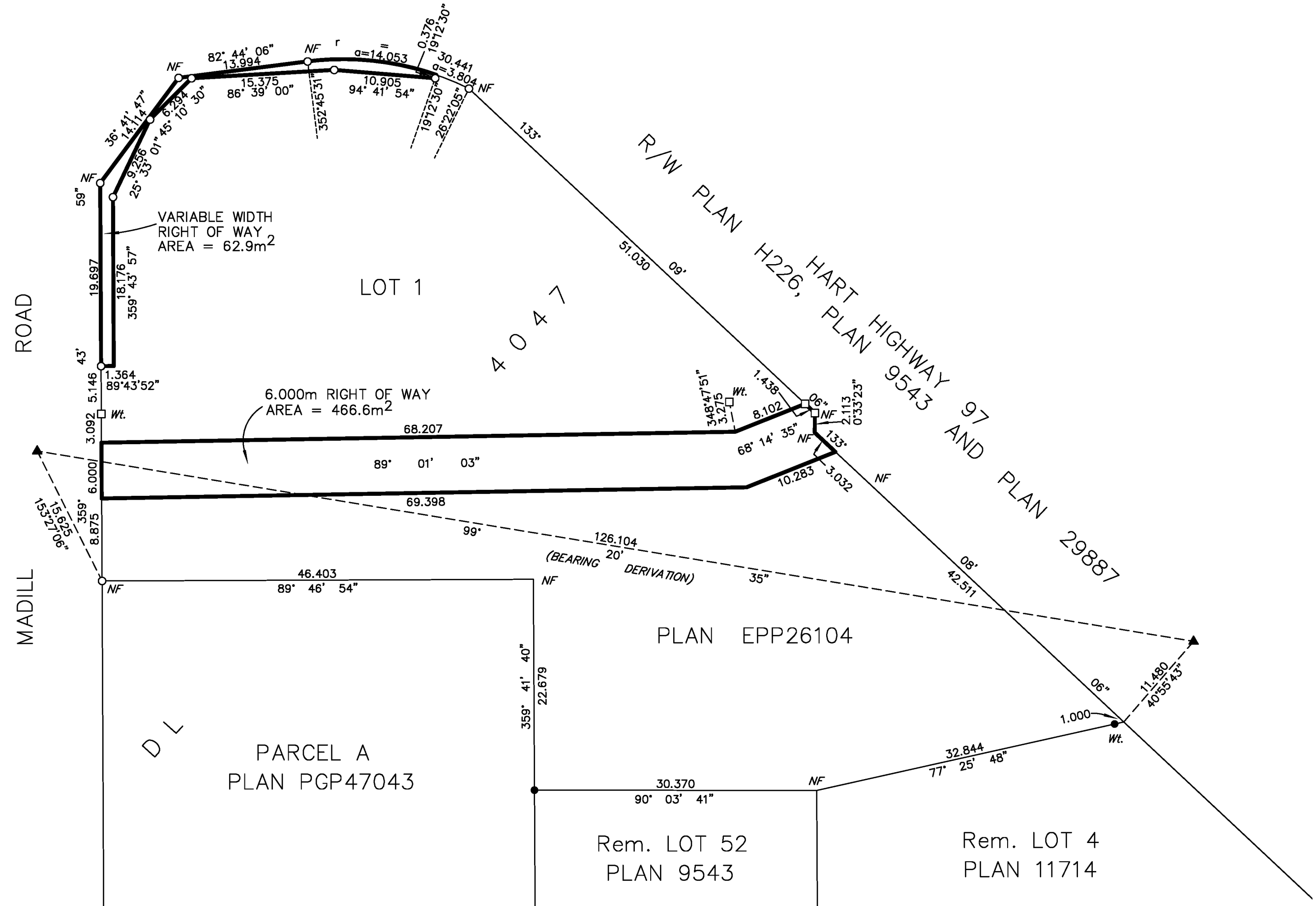
GRID BEARINGS ARE DERIVED FROM PREVIOUSLY INTEGRATED PLAN EPP26104.

**LEGEND**

- LEAD PLUG PLACED
- STANDARD IRON POST FOUND
- STANDARD IRON POST PLACED
- ▲ TRAVERSE HUB FOUND

NOTE: THIS PLAN SHOWS ONE OR MORE WITNESS POSTS WHICH ARE NOT SET ON THE TRUE CORNER(S).


TOTAL RIGHT OF WAY AREA = 529.5m<sup>2</sup>



THIS PLAN LIES WITHIN THE JURISDICTION OF THE APPROVING OFFICER FOR THE CITY OF PRINCE GEORGE. CPG File: DP100421

THE FIELD SURVEY REPRESENTED BY THIS PLAN WAS COMPLETED ON THE 31st DAY OF OCTOBER, 2014. SHAUNA C. GOERTZEN, BCLS 798

THIS PLAN LIES WITHIN THE REGIONAL DISTRICT OF FRASER - FORT GEORGE.



**McElhanney**  
 McElhanney Associates  
 Land Surveying Ltd.  
 Prince George, B.C.  
 E-mail: pgmals@mcelhanney.com  
 Ph: (250) 561-2229 Fax: (250) 563-1941

DL- 4047	File No. - 6155
CPG File No. DP100421	