

**STATUTORY RIGHT OF WAY PLAN OVER PART OF LOT 6 THROUGH LOT 10, INCLUSIVE, PLAN EPP46674; PART OF BLOCK C, EXCEPT PLANS EPP6473 AND EPP46674; AND PART OF BLOCK B, EXCEPT PLANS EPP6472 AND EPP46674; ALL IN DISTRICT LOT 748, CARIBOO DISTRICT.**

**PLAN EPP46675**

PURSUANT TO SECTION 113 OF THE LAND TITLE ACT

BCGS 93G.087

INTEGRATED SURVEY AREA No. 39, PRINCE GEORGE, NAD83 (CSRS)



THE INTENDED PLOT SIZE OF THIS PLAN IS 864mm IN WIDTH BY 560mm IN HEIGHT (D SIZE) WHEN PLOTTED AT A SCALE OF 1:1000

ALL DISTANCES ARE SHOWN IN METRES AND DECIMALS THEREOF, UNLESS OTHERWISE INDICATED.

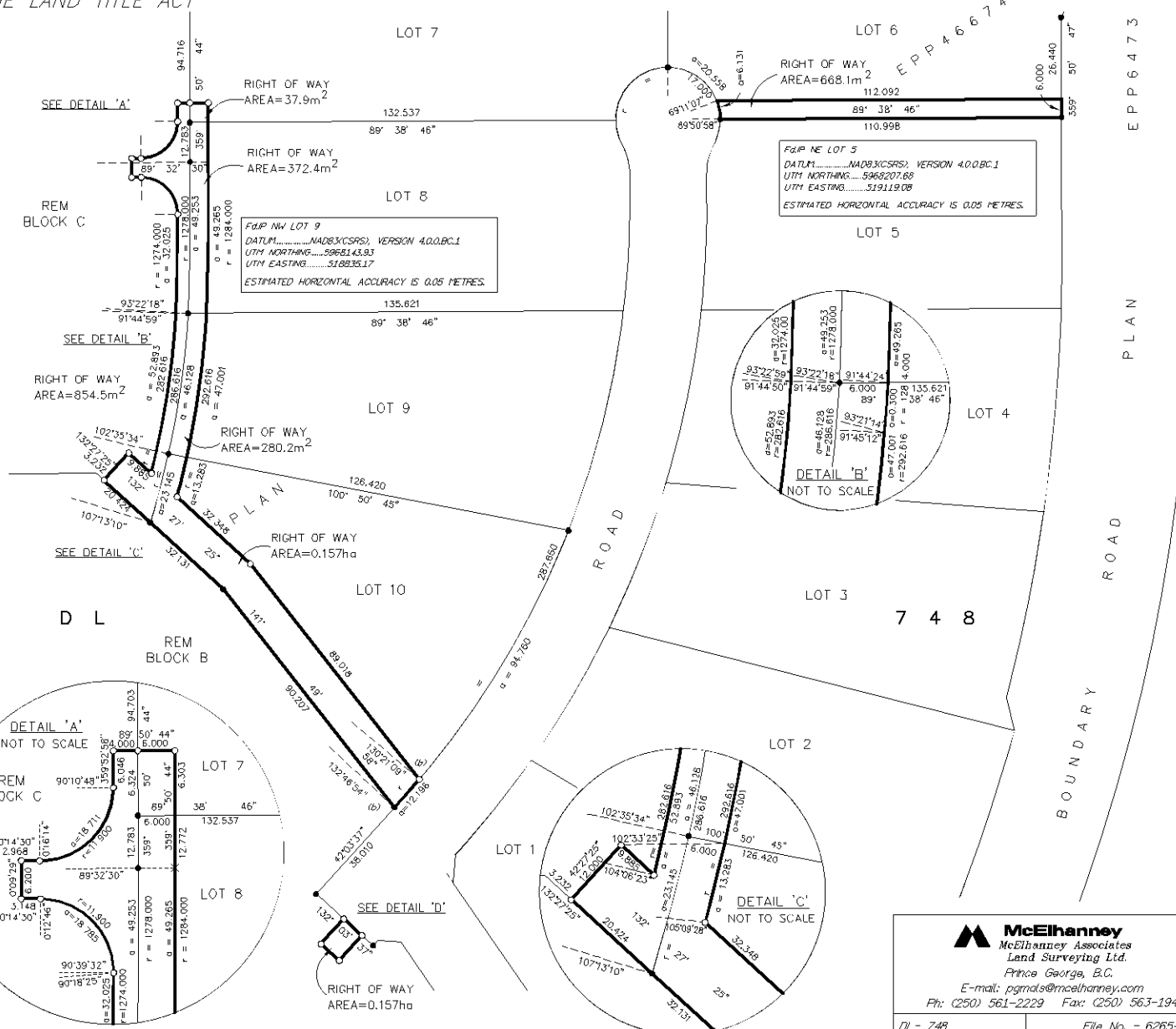
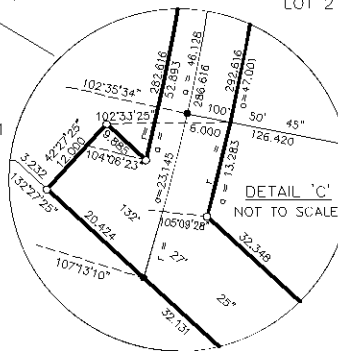
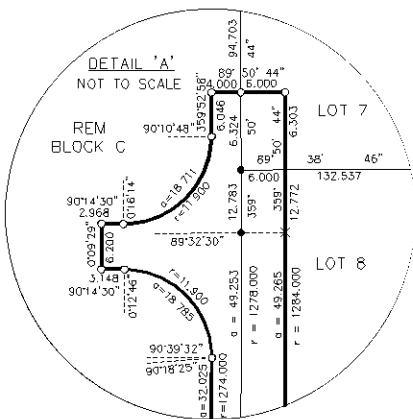
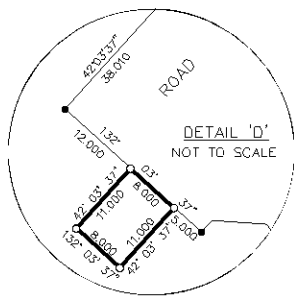
GRID BEARINGS ARE DERIVED FROM PREVIOUSLY INTEGRATED PLAN EPP46674

THIS PLAN SHOWS HORIZONTAL GROUND-LEVEL DISTANCES, UNLESS OTHERWISE SPECIFIED, TO COMPUTE GRID DISTANCES, MULTIPLY GROUND-LEVEL DISTANCES BY THE AVERAGE COMBINED FACTOR OF 0.9995011 WHICH HAS BEEN DERIVED FROM 88H1758 AND 86H1796.

**LEGEND**

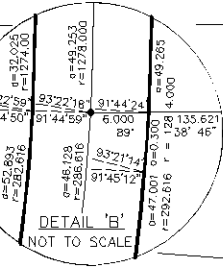
- STANDARD IRON POST FOUND
- STANDARD IRON POST PLACED

BOOK OF REFERENCE	
DESCRIPTION	AREA
Lot 6, Plan EPP46674	668.1m <sup>2</sup>
Lot 7, Plan EPP46674	37.9m <sup>2</sup>
Lot 8, Plan EPP46674	372.4m <sup>2</sup>
Lot 8, Plan EPP46674	280.2m <sup>2</sup>
Lot 10, Plan EPP46674	0.157 ha
Rem Block C DL748	854.5m <sup>2</sup>
Rem Block B DL748	88.0m <sup>2</sup>



FILE NO. LOT 5  
DATUM.....NAD83(CSRS), VERSION 4.0.0.BC.1  
UTM NORTHING.....5968207.68  
UTM EASTING.....519119.08  
ESTIMATED HORIZONTAL ACCURACY IS 0.05 METRES.

FILE NO. LOT 9  
DATUM.....NAD83(CSRS), VERSION 4.0.0.BC.1  
UTM NORTHING.....5968143.93  
UTM EASTING.....518835.17  
ESTIMATED HORIZONTAL ACCURACY IS 0.05 METRES.



THIS PLAN LIES WITHIN THE JURISDICTION OF THE APPROVING OFFICER FOR THE CITY OF PRINCE GEORGE.  
CPG File: SD100458

THE FIELD SURVEY REPRESENTED BY THIS PLAN WAS COMPLETED ON THE 5th DAY OF JANUARY, 2015.  
SHAUNA C. GOERTZEN, BCLS 798

THIS PLAN LIES WITHIN THE REGIONAL DISTRICT OF FRASER - FORT GEORGE.

**McElhanney**  
McElhanney Associates  
Land Surveying Ltd.  
Prince George, B.C.  
E-mail: pgmats@mcElhanney.com  
Ph: (250) 561-2229 Fax: (250) 563-1941

DL - 748 File No. - 6265-RW

CPG File No. SD100458