

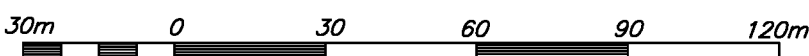
# SUBDIVISION PLAN OF PART OF BLOCK B, EXCEPT PLAN EPP6472 AND PART OF BLOCK C, EXCEPT PLAN EPP6473, ALL IN DISTRICT LOT 748, CARIBOO DISTRICT

## PLAN EPP46674

BCGS 93G.087

INTEGRATED SURVEY AREA No. 39, PRINCE GEORGE, NAD83 (CSRS)

THE INTENDED PLOT SIZE OF THIS PLAN IS 864mm IN WIDTH BY 560mm IN HEIGHT (D SIZE) WHEN PLOTTED AT A SCALE OF 1:1500



ALL DISTANCES ARE SHOWN IN METRES AND DECIMALS THEREOF, UNLESS OTHERWISE INDICATED.

GRID BEARINGS ARE DERIVED FROM GNSS OBSERVATIONS BETWEEN GEODETIC CONTROL MONUMENTS 86H1758 AND 86H1796.

THIS PLAN SHOWS HORIZONTAL GROUND-LEVEL DISTANCES, UNLESS OTHERWISE SPECIFIED. TO COMPUTE GRID DISTANCES, MULTIPLY GROUND-LEVEL DISTANCES BY THE AVERAGE COMBINED FACTOR OF 0.9995011 WHICH HAS BEEN DERIVED FROM 86H1758 AND 86H1796.

### LEGEND

- STANDARD CAPPED POST FOUND
- STANDARD IRON POST FOUND
- STANDARD IRON POST PLACED
- CONTROL MONUMENT FOUND

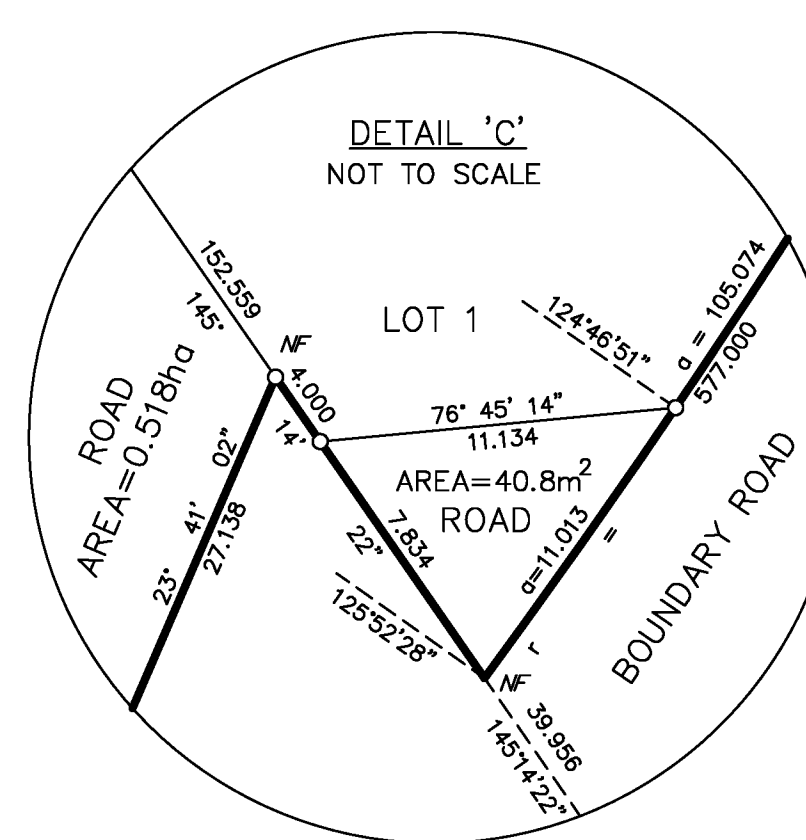
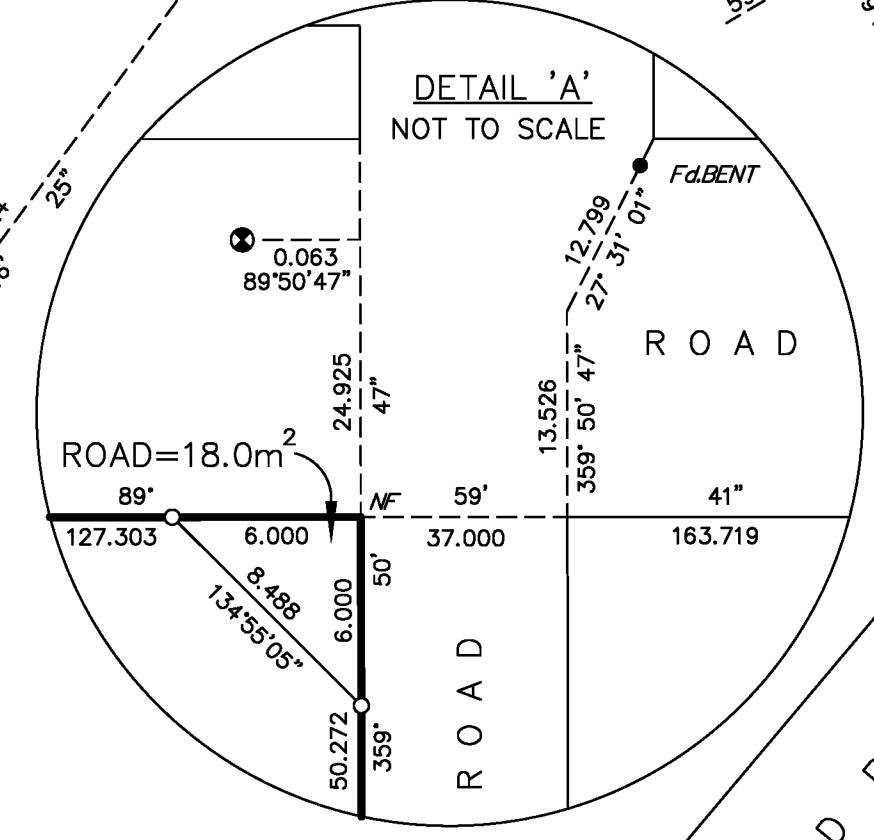
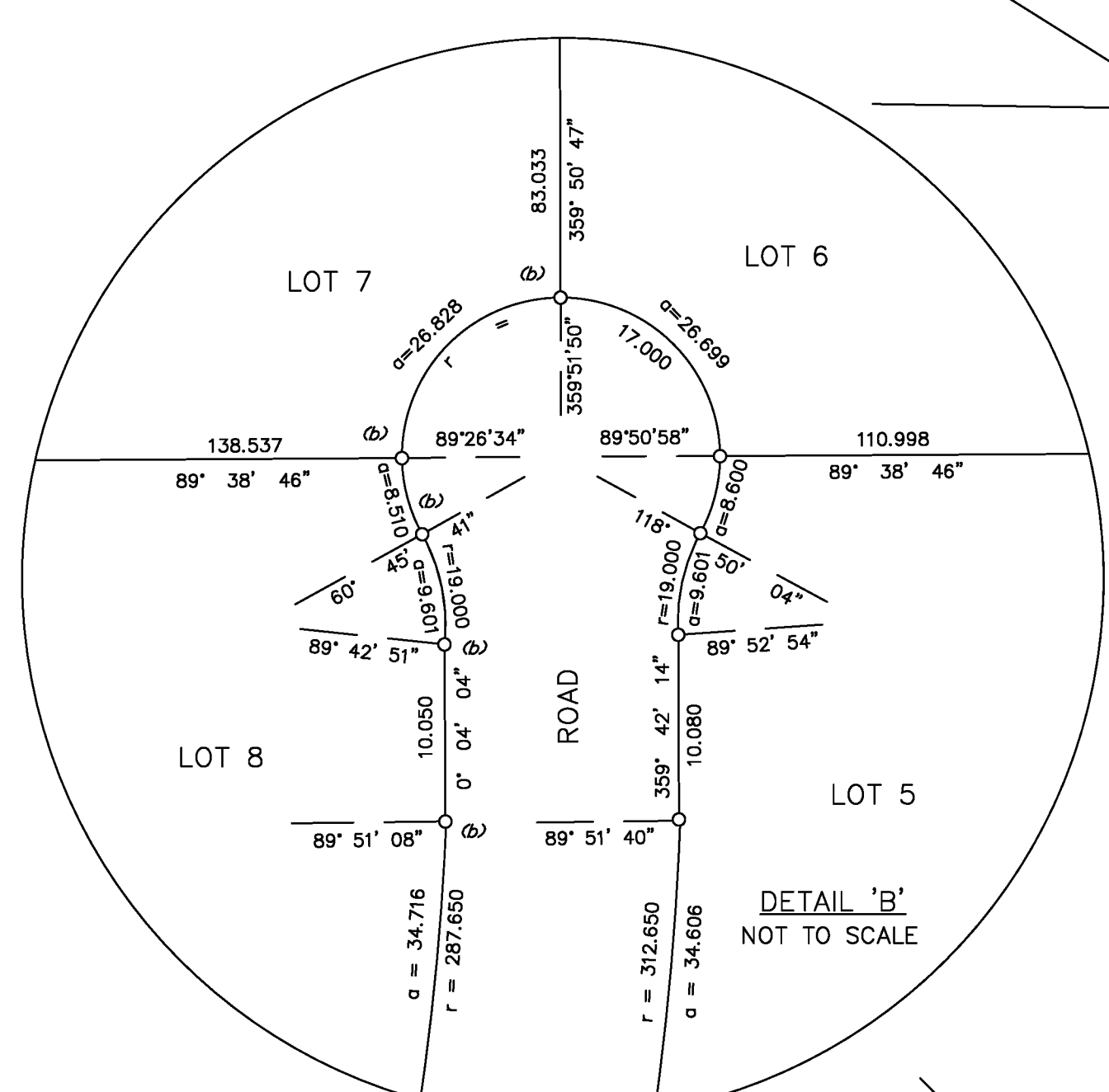
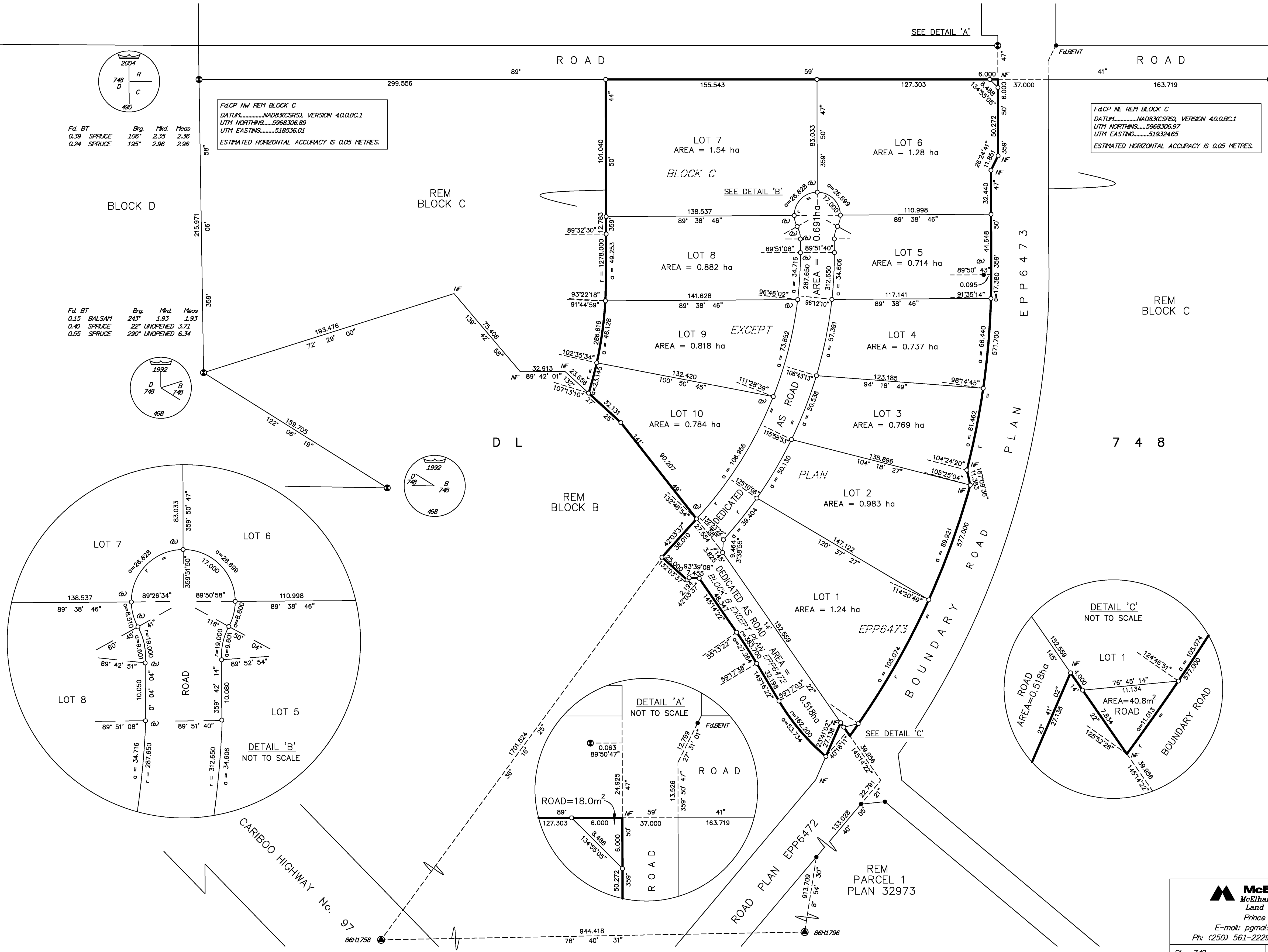
BEARINGS TO BEARING TREES ARE MAGNETIC.

Fd. BT	Brg.	Mtd.	Mreas
0.39	SPRUCE	106°	2.35
0.24	SPRUCE	195°	2.96

Fd. BT	Brg.	Mtd.	Mreas
0.15	BALSAM	243°	1.93
0.40	SPRUCE	22°	UNOPENED 3.71
0.55	SPRUCE	290°	UNOPENED 6.34

Fd/OP NW REM BLOCK C  
 DATUM.....NAD83(CSRS), VERSION 4.0.0.BC.1  
 UTM NORTHING.....5968306.89  
 UTM EASTING.....518536.01  
 ESTIMATED HORIZONTAL ACCURACY IS 0.05 METRES.

Fd/OP NE REM BLOCK C  
 DATUM.....NAD83(CSRS), VERSION 4.0.0.BC.1  
 UTM NORTHING.....5968306.97  
 UTM EASTING.....519324.65  
 ESTIMATED HORIZONTAL ACCURACY IS 0.05 METRES.



THIS PLAN LIES WITHIN THE JURISDICTION OF THE APPROVING OFFICER FOR THE CITY OF PRINCE GEORGE. CPG File #: SD100458

THE FIELD SURVEY REPRESENTED BY THIS PLAN WAS COMPLETED ON THE 21st DAY OF NOVEMBER, 2014. SHAUNA C. GOERTZEN, BCLS 798

THIS PLAN LIES WITHIN THE REGIONAL DISTRICT OF FRASER - FORT GEORGE.

**McElhanney**  
 McElhanney Associates  
 Land Surveying Ltd.  
 Prince George, B.C.  
 E-mail: pgmals@mcElhanney.com  
 Ph: (250) 561-2229 Fax: (250) 563-1941

DL-748 File No. - 6265  
 CPG File No. SD100458