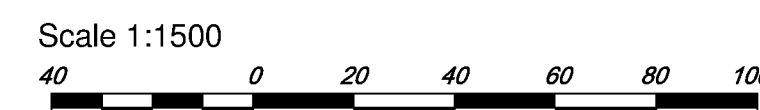


SUBDIVISION PLAN OF PART OF PARCEL 1, DISTRICT LOT 955, CARIBOO DISTRICT, PLAN PGP36115

PLAN EPP45956

BCGS 93G.097
City of Prince George



The intended plot size of this plan is 864mm in width by 560mm in height (D size) when plotted at a scale of 1:1500.

Distances are in metres and decimals thereof

Integrated Survey Area No. 39, City of Prince George, NAD83(CSRS) 4.0.0.BC.1.

Grid bearings are derived from observations between geodetic control monuments 85H1257 and 85H1287.

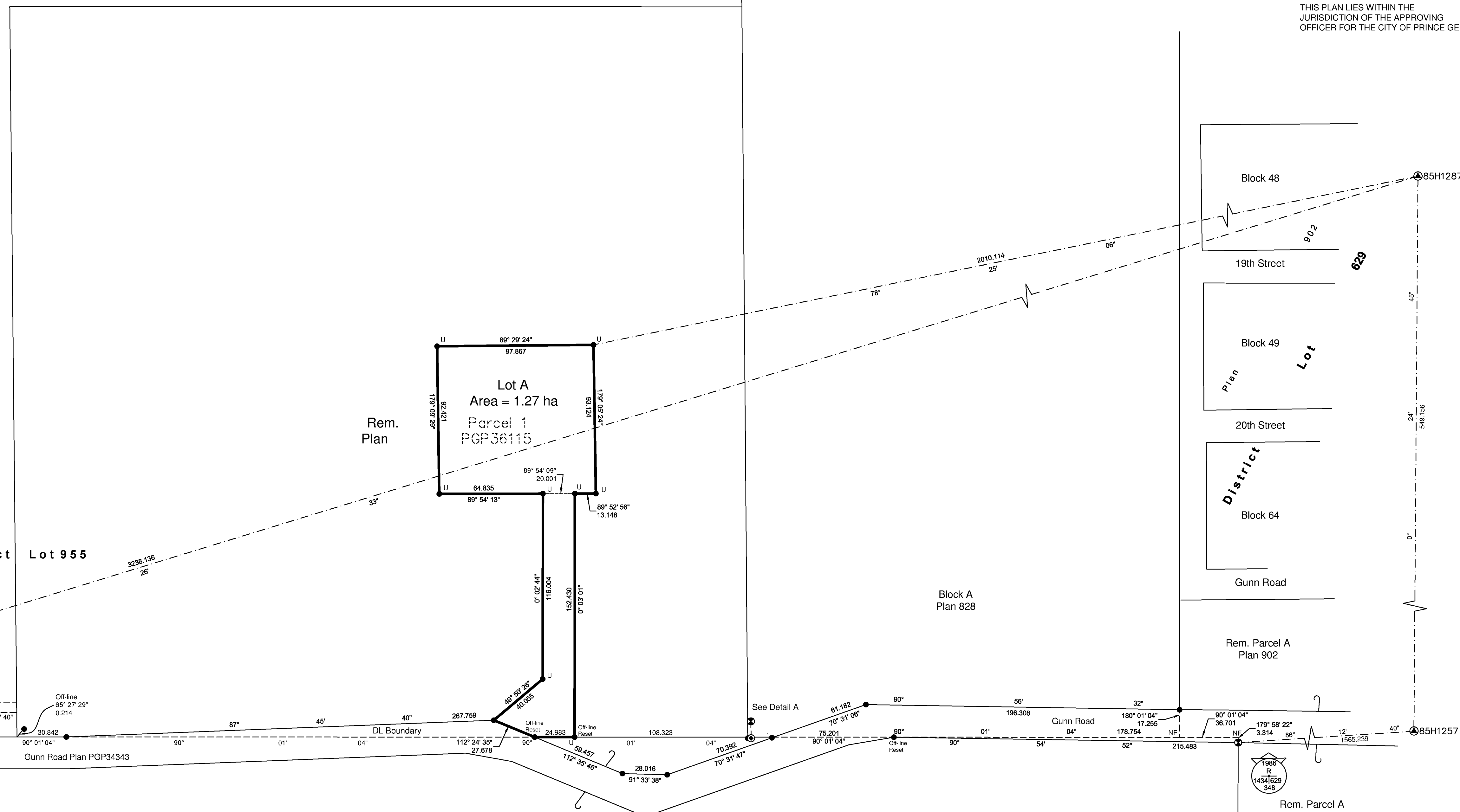
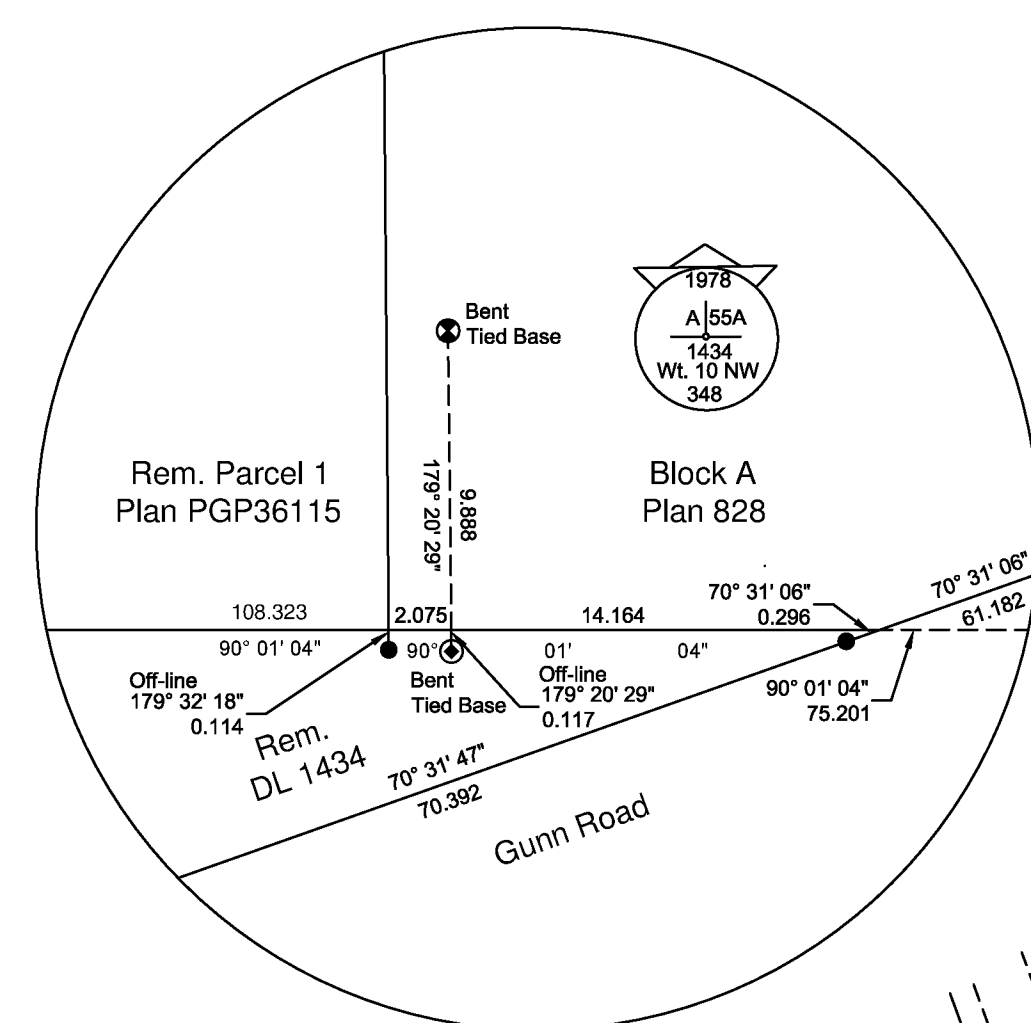
This plan shows horizontal ground-level distances unless otherwise specified. To compute grid distances, multiply ground-level distances by the average combined factor of 0.9995012 which has been derived from geodetic control monuments 85H1257 and 85H1287.

LEGEND:

- Denotes Standard Iron Post found
- U Denotes unregistered Standard Iron Post found. Set by Gordon Kilbride, BCLS on November 17th, 2005 for unregistered lease plan
- AI Denotes Non-Standard Post Found (Angle Iron)
- Denotes Non-Standard Post found (0.05 Ø Iron pipe filled with concrete)
- Denotes Standard Capped Post found
- Denotes Control Monument found

Note: This plan shows one or more witness posts which are not set at the true corner(s)

DETAIL 'A'
NOT TO SCALE



THIS PLAN LIES WITHIN THE JURISDICTION OF THE APPROVING OFFICER FOR THE CITY OF PRINCE GEORGE

THIS PLAN LIES WITHIN THE FRASER-FORT GEORGE REGIONAL DISTRICT

THE FIELD SURVEY REPRESENTED BY THIS PLAN WAS COMPLETED ON THE 26th DAY OF OCTOBER, 2014
IAN R. ROBERTSON, BCLS # 749

Public Works and Government Services
Canada Geomatics Services

Travaux Publics et Services gouvernementaux
Canada

219-800 Burrard Street
Vancouver, BC, V6Z 0B8
604-775-7079
EDR# 461339
BC # 3184.00
SF # 3422.00
Project # R 071814.001
Fb # 035 Pg. 37-54, Fb # 036, Pg 1-2