

EXPLANATORY PLAN OF EASEMENT OVER PARTS OF LOTS A AND B, DISTRICT LOT 1433, CARIBOO DISTRICT, PLAN EPP44842

PLAN EPP45913

PURSUANT TO SECTION 99(1)(e) OF THE LAND TITLE ACT.
FOR EASEMENT PURPOSES

BCGS 93G.087

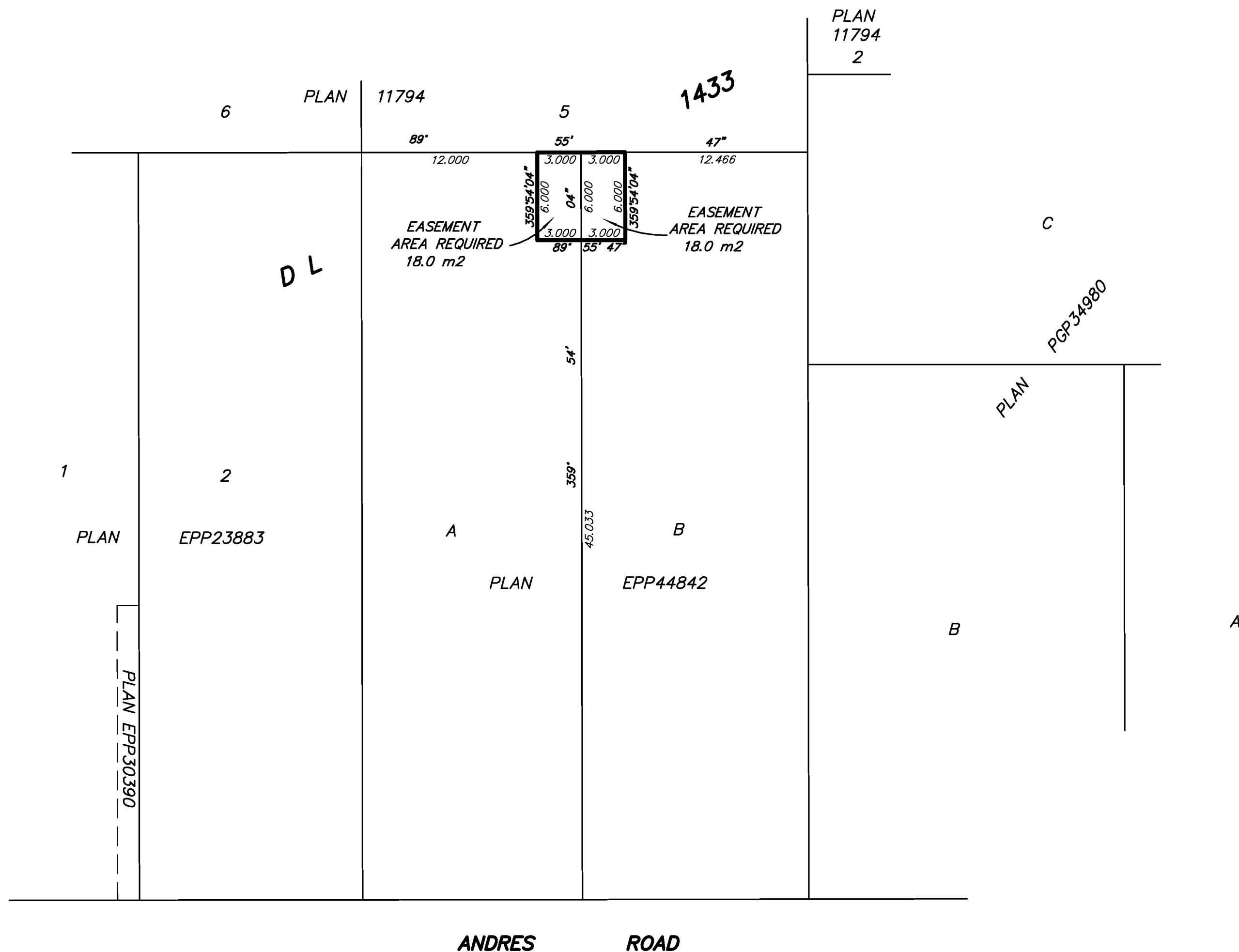
INTEGRATED SURVEY AREA No. 39, PRINCE GEORGE NAD83 (CSRS) 4.0.0.BC.1



ALL DISTANCES ARE HORIZONTAL, GROUND LEVEL AND ARE SHOWN
IN METRES AND DECIMALS THEREOF, UNLESS OTHERWISE INDICATED

THE INTENDED PLOT SIZE OF THIS PLAN IS 560 mm IN
WIDTH BY 432 mm IN HEIGHT (C-SIZE) WHEN PLOTTED AT
A SCALE OF 1:250

BEARINGS ARE GRID DERIVED FROM PLAN EPP44842



McElhanney
McELHANNEY ASSOCIATES
LAND SURVEYING LTD.
Suite 12
556 North Nechako Road
Prince George BC
Canada V2K 1A1
Tel 250 561 2229

BOOK OF REFERENCE	
DESCRIPTION	AREA (m ²)
LOT A, DL 1433, PLAN EPP44842	18.0
LOT B, DL 1433, PLAN EPP44842	18.0

THIS PLAN IS BASED ON THE FOLLOWING LAND TITLE
AND SURVEY AUTHORITY OF BC RECORDS: PLAN EPP44842
BRIAN O. BROWN, BCLS #623
8th DAY OF SEPTEMBER, 2016

OUR FILE NO. 2342-06226-00
OUR DRAWING NO. 6226-01-E.DWG

THIS PLAN LIES WITHIN THE REGIONAL DISTRICT OF FRASER – FORT GEORGE