

**SUBDIVISION PLAN
OF PART OF LOT 3 DISTRICT LOT 913
CARIBOO DISTRICT PLAN 13380
BCGS 93G.087**

PLAN EPP45418



The intended plot size of this plan is 432mm in width by 560mm in height (C size) when plotted at a scale of 1:750.

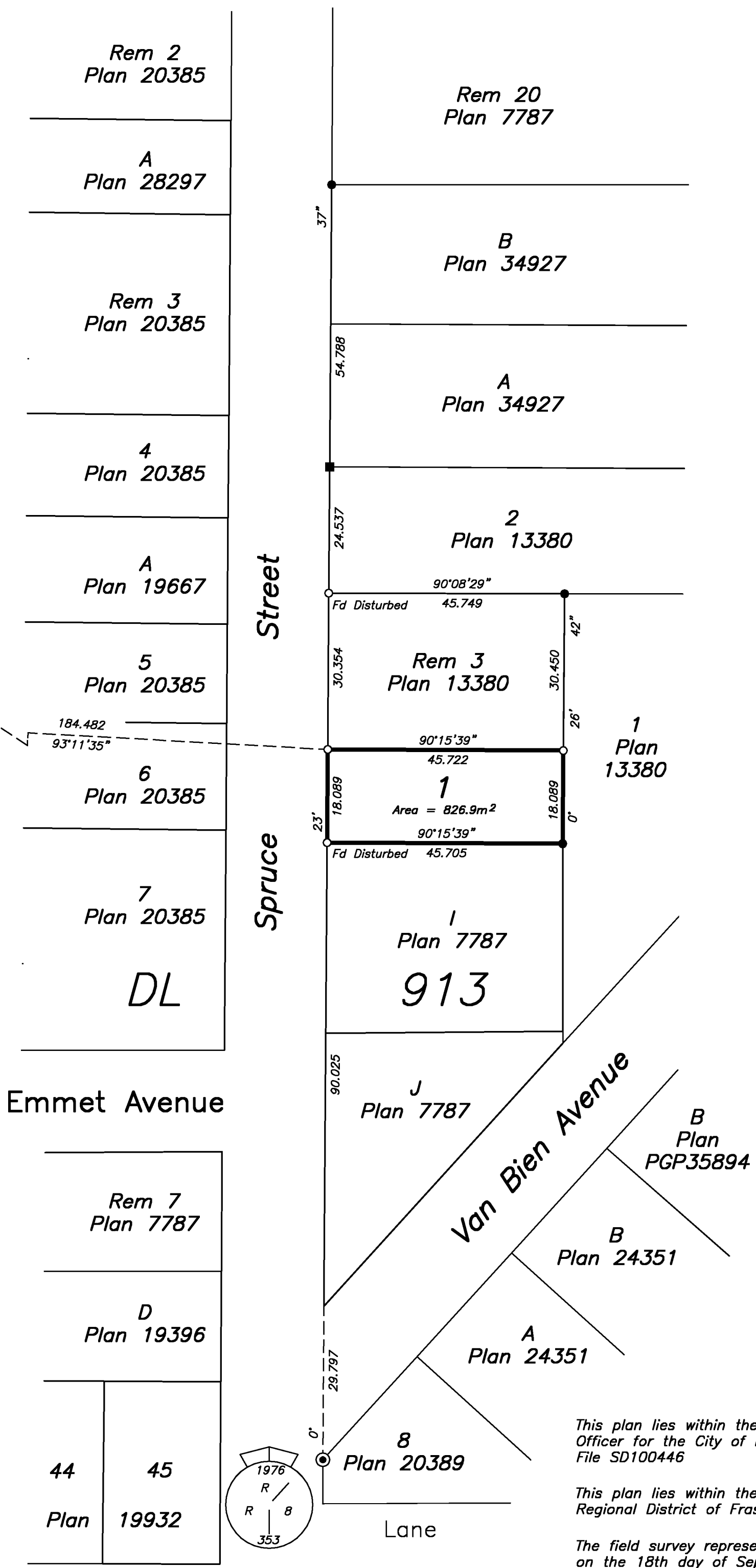
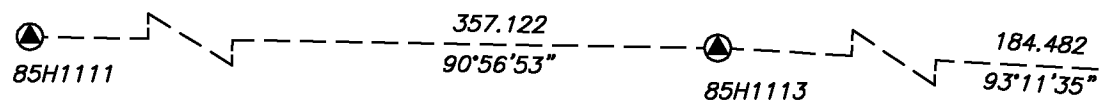
Integrated Survey Area No. 39, City of Prince George, NAD83 (CSRS) 4.0.0.BC.1.

Grid bearings are derived from observations between geodetic control monuments 86H1111 and 86H1113.

This plan shows horizontal ground-level distances unless otherwise specified. To compute grid distances, multiply ground-level distances by the average combined factor of 0.9995130, which has been derived from geodetic control monument 86H1113 (GCM #795674)

LEGEND

- ⊙ denotes control monument found
- ⊙ denotes standard concrete post found
- denotes standard iron post found
- denotes lead plug found
- denotes standard iron post placed



This plan lies within the jurisdiction of the Approving Officer for the City of Prince George
File SD100446

This plan lies within the Regional District of Fraser-Fort George

The field survey represented by this plan was completed on the 18th day of September, 2014.
Brian Sansom, BCLS 739

ECR #166229

S:\PrinceGeorge\0100050890\000\Drawings\0100050890-SDSU01-R00.dwg 2014/09/20 - 15:59

FOCUS
Focus Surveys (BC) Limited Partnership
Suite 100-2375 Burrard Ave., Box 1070 Vanderhoof, BC
PROJECT REF./DRAWING No.
010050890-SDSU01-R00

