

# SUBDIVISION OF LOT 14, DISTRICT LOT 1433, CARIBOO DISTRICT, PLAN 11794.

PLAN EPP44842

BCGS 93G.087

INTEGRATED SURVEY AREA No. 39, PRINCE GEORGE, NAD83 (CSRS)

THE INTENDED PLOT SIZE OF THIS PLAN IS 280mm IN WIDTH BY 216mm IN HEIGHT (A SIZE) WHEN PLOTTED AT A SCALE OF 1:1000



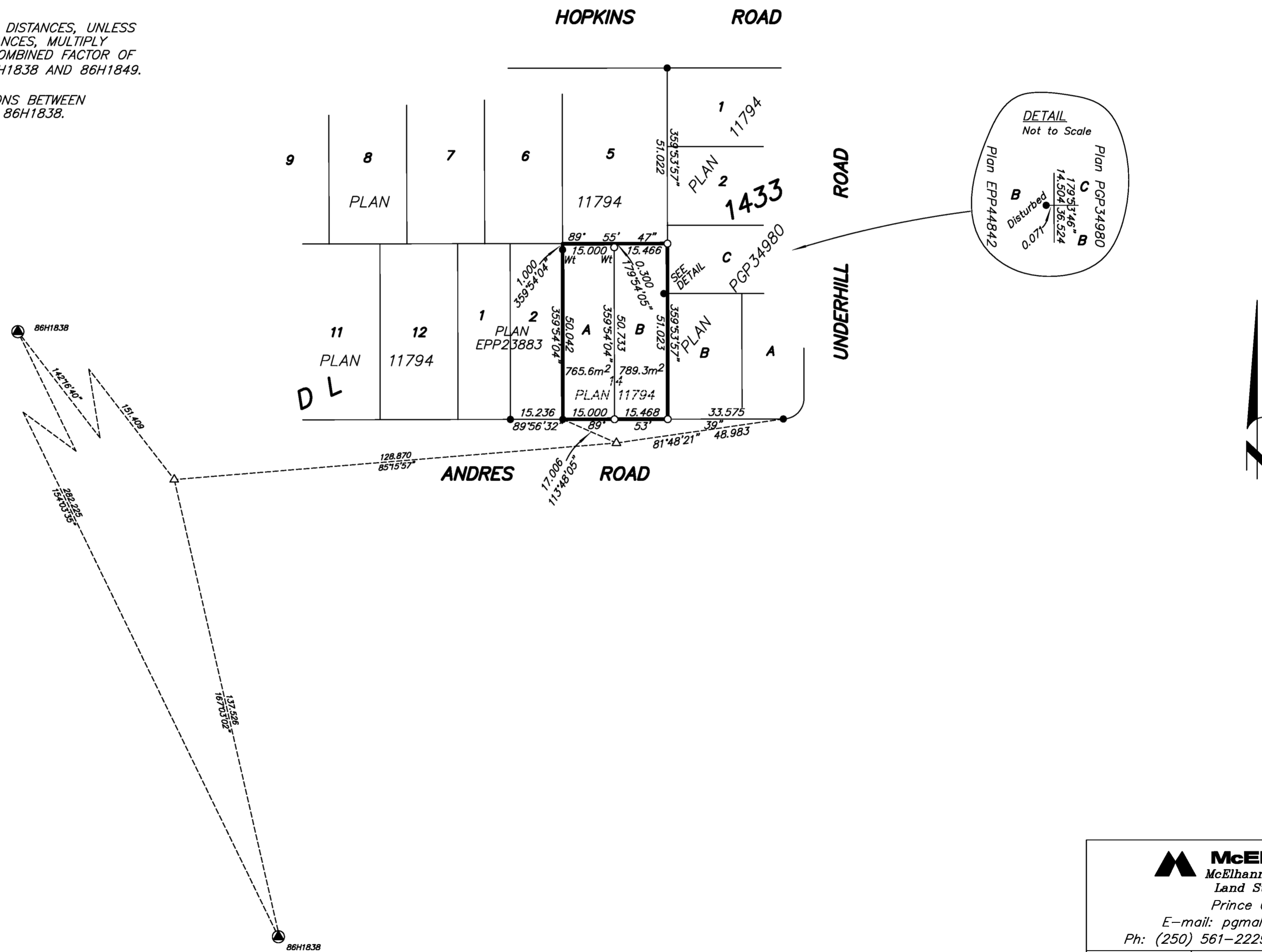
ALL DISTANCES ARE HORIZONTAL GROUND-LEVEL AND ARE SHOWN IN METRES AND DECIMALS THEREOF, UNLESS OTHERWISE INDICATED.

**LEGEND**

- STANDARD IRON POST FOUND
- STANDARD IRON POST PLACED
- ⊙ CONTROL MONUMENT FOUND
- △ TRAVERSE HUB PLACED

THIS PLAN SHOWS HORIZONTAL GROUND-LEVEL DISTANCES, UNLESS OTHERWISE SPECIFIED. TO COMPUTE GRID DISTANCES, MULTIPLY GROUND-LEVEL DISTANCES BY THE AVERAGE COMBINED FACTOR OF 0.999511 WHICH HAS BEEN DERIVED FROM 86H1838 AND 86H1849.

GRID BEARINGS ARE DERIVED FROM OBSERVATIONS BETWEEN GEODETIC CONTROL MONUMENTS 86H1849 AND 86H1838.



THIS PLAN LIES WITHIN THE JURISDICTION OF THE APPROVING OFFICER FOR THE CITY OF PRINCE GEORGE.  
CPG File: SD100463

THE FIELD SURVEY REPRESENTED BY THIS PLAN WAS COMPLETED ON THE 10th DAY OF SEPTEMBER, 2014.  
DALE KEOWN, BCLS 468

THIS PLAN LIES WITHIN THE REGIONAL DISTRICT OF FRASER - FORT GEORGE.

**McElhanney**  
McElhanney Associates  
Land Surveying Ltd.  
Prince George, B.C.

E-mail: pgmals@mcelhanney.com  
Ph: (250) 561-2229 Fax: (250) 563-1941

DL - 1433	File No. - 6226-S
CPG File No. SD100463	