

# EXPLANATORY PLAN OF EASEMENT OVER PART OF LOT 5, DISTRICT LOT 4039, CARIBOO DISTRICT, PLAN 13991.

**PLAN EPP44823**

PURSUANT TO SECTION 99(1)(e) OF THE LAND TITLE ACT.

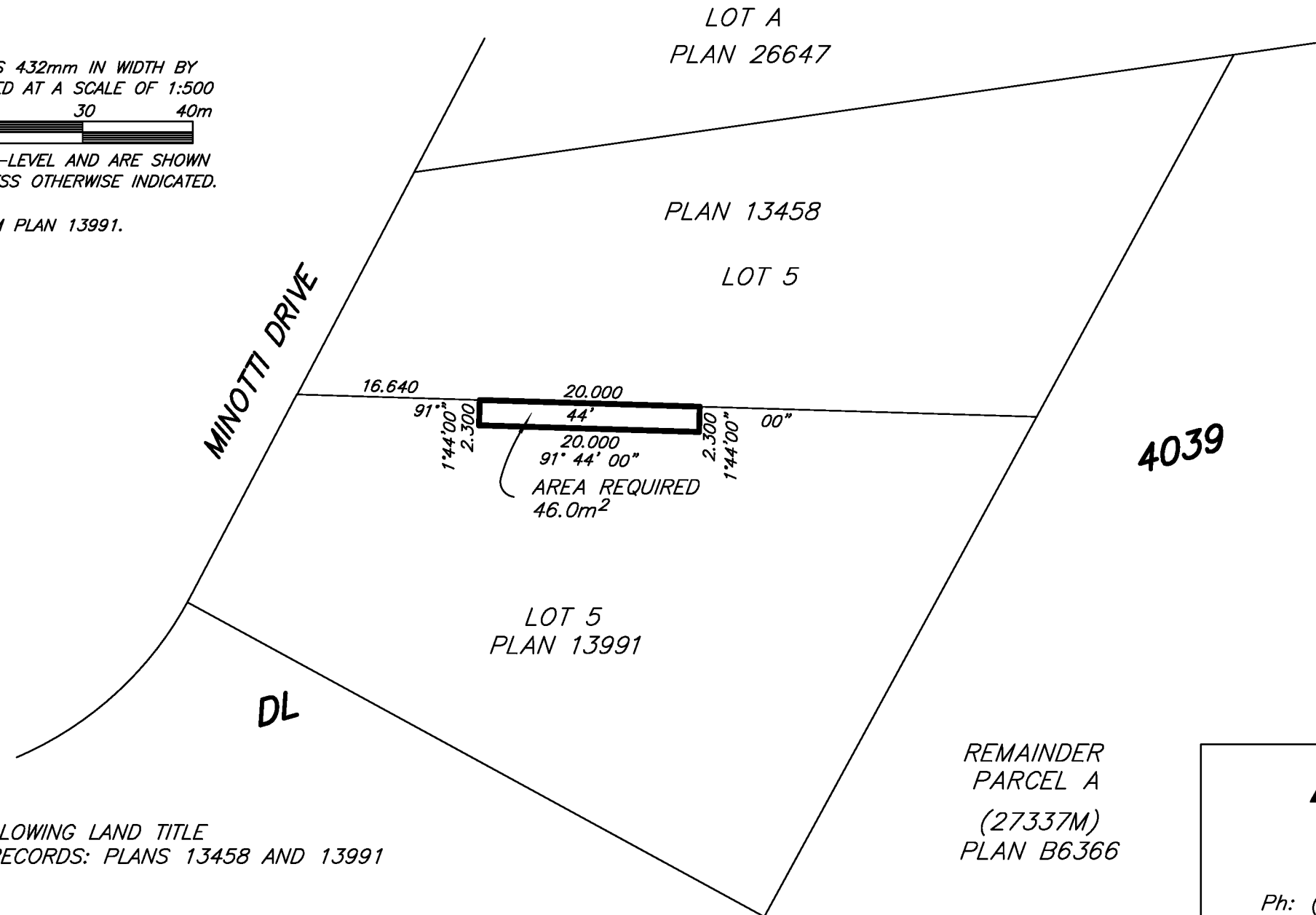
**BCGS 93G.097**

THE INTENDED PLOT SIZE OF THIS PLAN IS 432mm IN WIDTH BY 280mm IN HEIGHT (B SIZE) WHEN PLOTTED AT A SCALE OF 1:500



ALL DISTANCES ARE HORIZONTAL GROUND-LEVEL AND ARE SHOWN IN METRES AND DECIMALS THEREOF, UNLESS OTHERWISE INDICATED.

BEARINGS ARE ASTRONOMIC DERIVED FROM PLAN 13991.



THIS PLAN IS BASED ON THE FOLLOWING LAND TITLE  
AND SURVEY AUTHORITY OF BC RECORDS: PLANS 13458 AND 13991  
DALE KEOWN, BCLS 468  
11th DAY OF SEPTEMBER, 2014

REMAINDER  
PARCEL A  
(27337M)  
PLAN B6366



**McElhanney**  
McElhanney Associates  
Land Surveying Ltd.  
Prince George, B.C.

E-mail: [pgmals@mcelhanney.com](mailto:pgmals@mcelhanney.com)  
Ph: (250) 561-2229 Fax: (250) 563-1941

DL- 4039

File No. - 6259-E

THIS PLAN LIES WITHIN THE REGIONAL DISTRICT OF FRASER - FORT GEORGE.