

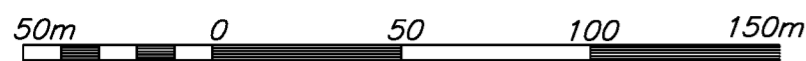
REFERENCE PLAN OF ROAD DEDICATION WITHIN DISTRICT LOT 10228, CARIBOO DISTRICT,

PLAN EPP44822

PURSUANT TO SECTION 107 OF THE LAND TITLE ACT.

BCGS 93G.096

THE INTENDED PLOT SIZE OF THIS PLAN IS 432mm IN WIDTH BY 560mm IN HEIGHT (C SIZE) WHEN PLOTTED AT A SCALE OF 1:2000

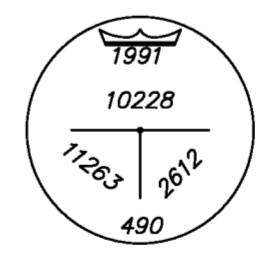
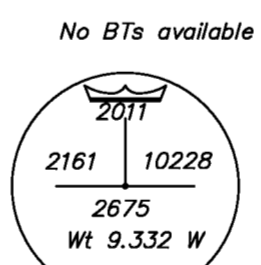
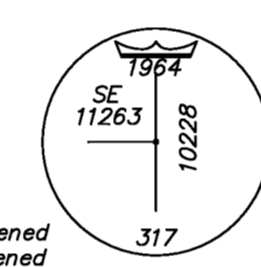
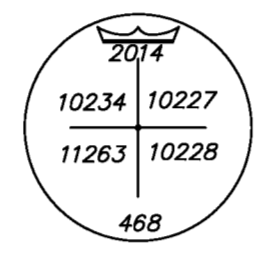
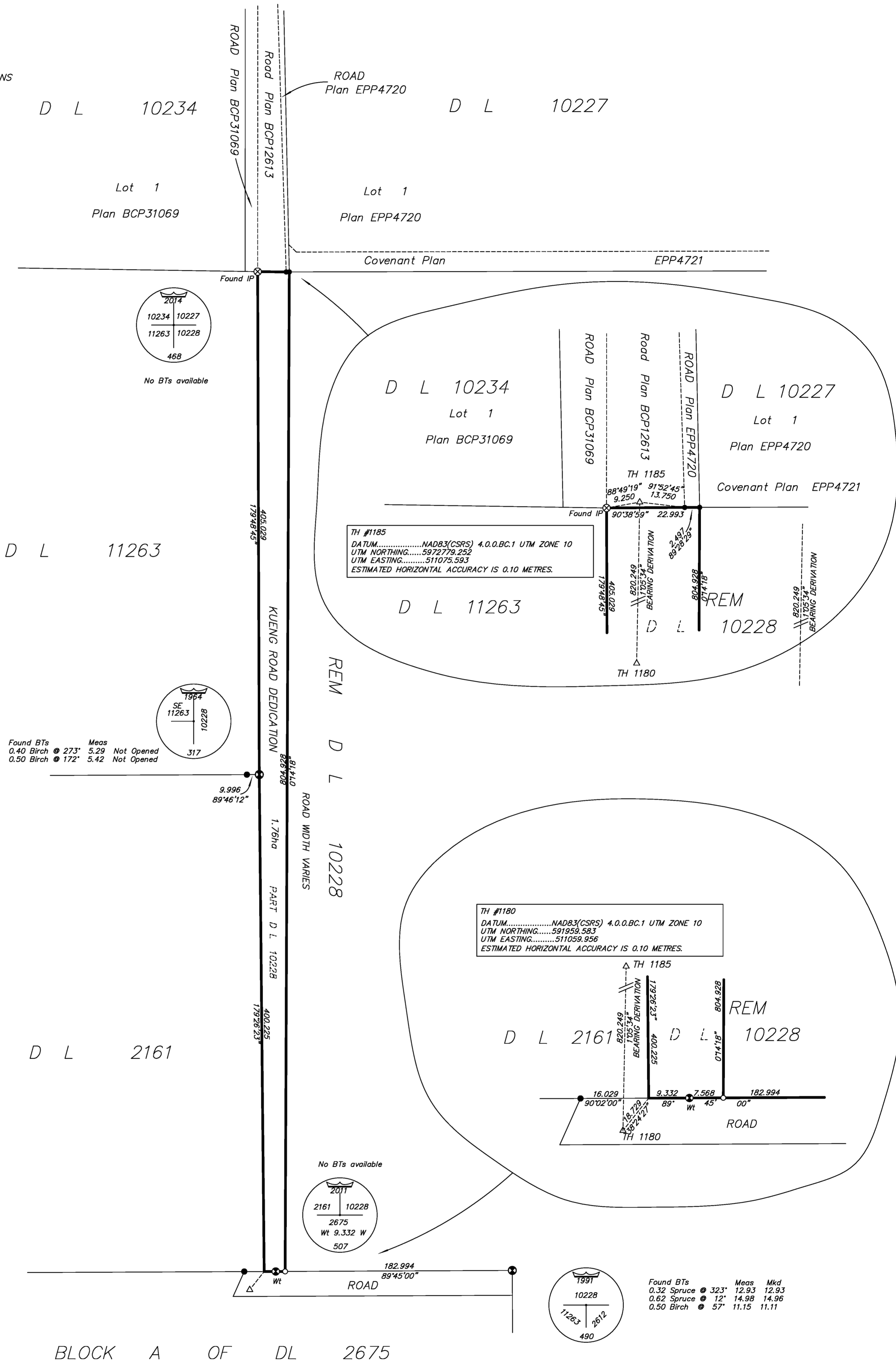


ALL DISTANCES ARE HORIZONTAL GROUND-LEVEL, AND ARE SHOWN IN METRES AND DECIMALS THEREOF, UNLESS OTHERWISE INDICATED.

GRID BEARINGS ARE DERIVED FROM DIFFERENTIAL CARRIER PHASE GPS OBSERVATIONS AND ARE REFERRED TO THE CENTRAL MERIDIAN OF UTM ZONE 10, TO OBTAIN LOCAL ASTRONOMIC BEARINGS REFERRED TO THE MERIDIAN THROUGH CONCRETE POST #1185, SUBTRACT 0°08'09".

THE UTM COORDINATES AND ESTIMATED HORIZONTAL POSITIONAL ACCURACY ACHIEVED ARE DERIVED FROM DUAL FREQUENCY OBSERVATIONS PROCESSED USING NATURAL RESOURCES CANADA'S PRECISE POINT POSITIONING SERVICE.

THIS PLAN SHOWS HORIZONTAL GROUND-LEVEL DISTANCES UNLESS OTHERWISE SPECIFIED. TO COMPUTE GRID DISTANCES, MULTIPLY GROUND-LEVEL DISTANCES BY THE AVERAGE COMBINED FACTOR OF 0.99947527. THE AVERAGE COMBINED FACTOR HAS BEEN DETERMINED BASED ON AN ELLIPSOIDAL ELEVATION OF 763.017 METRES.



THIS PLAN LIES WITHIN THE JURISDICTION OF THE APPROVING OFFICER FOR THE CITY OF PRINCE GEORGE. CPG File:

THE FIELD SURVEY REPRESENTED BY THIS PLAN WAS COMPLETED ON THE 12th DAY OF SEPTEMBER, 2014. DALE KEOWN, BCLS 468

THIS PLAN LIES WITHIN THE REGIONAL DISTRICT OF FRASER - FORT GEORGE.

McElhanney
 McElhanney Associates
 Land Surveying Ltd.
 Prince George, B.C.
 E-mail: pgmals@mcElhanney.com
 Ph: (250) 561-2229 Fax: (250) 563-1941

DL- 10228	File No. - 6260-RD
CPG File No.	