

**REFERENCE PLAN OF STATUTORY RIGHT OF WAY WITHIN
LOT 1, DISTRICT LOT 936, CARIBOO DISTRICT PLAN EPP21547;
LOTS A AND B, DISTRICT LOT 906, CARIBOO DISTRICT,
PLAN EPP36984 AND LOT A, DISTRICT LOT 936,
CARIBOO DISTRICT, PLAN 19765.**

PLAN EPP44539

PURSUANT TO SECTION 113 OF THE LAND TITLE ACT.

BCGS 93G.097

INTEGRATED SURVEY AREA No. 39, PRINCE GEORGE, NAD83 (CSRS)

THE INTENDED PLOT SIZE OF THIS PLAN IS 560mm IN WIDTH BY 864mm IN HEIGHT (D SIZE) WHEN PLOTTED AT A SCALE OF 1:500

THIS PLAN SHOWS HORIZONTAL GROUND-LEVEL DISTANCES, UNLESS OTHERWISE SPECIFIED, TO COMPUTE GRID DISTANCES, MULTIPLY GROUND-LEVEL DISTANCES BY THE AVERAGE COMBINED FACTOR OF 0.9995105 WHICH HAS BEEN DERIVED FROM PREVIOUSLY INTEGRATED PLAN EPP21547.

10m 0 10 20 30 40m

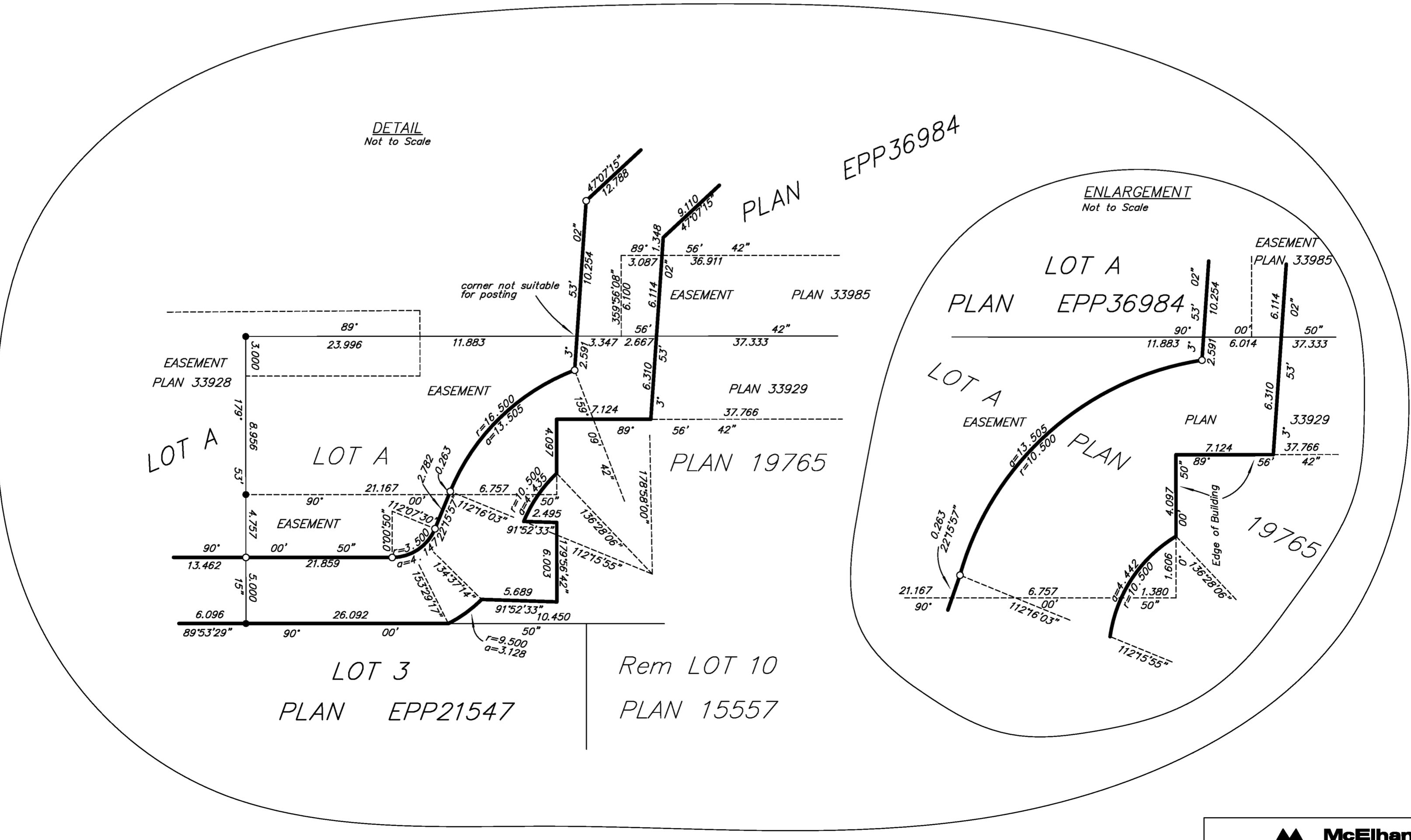
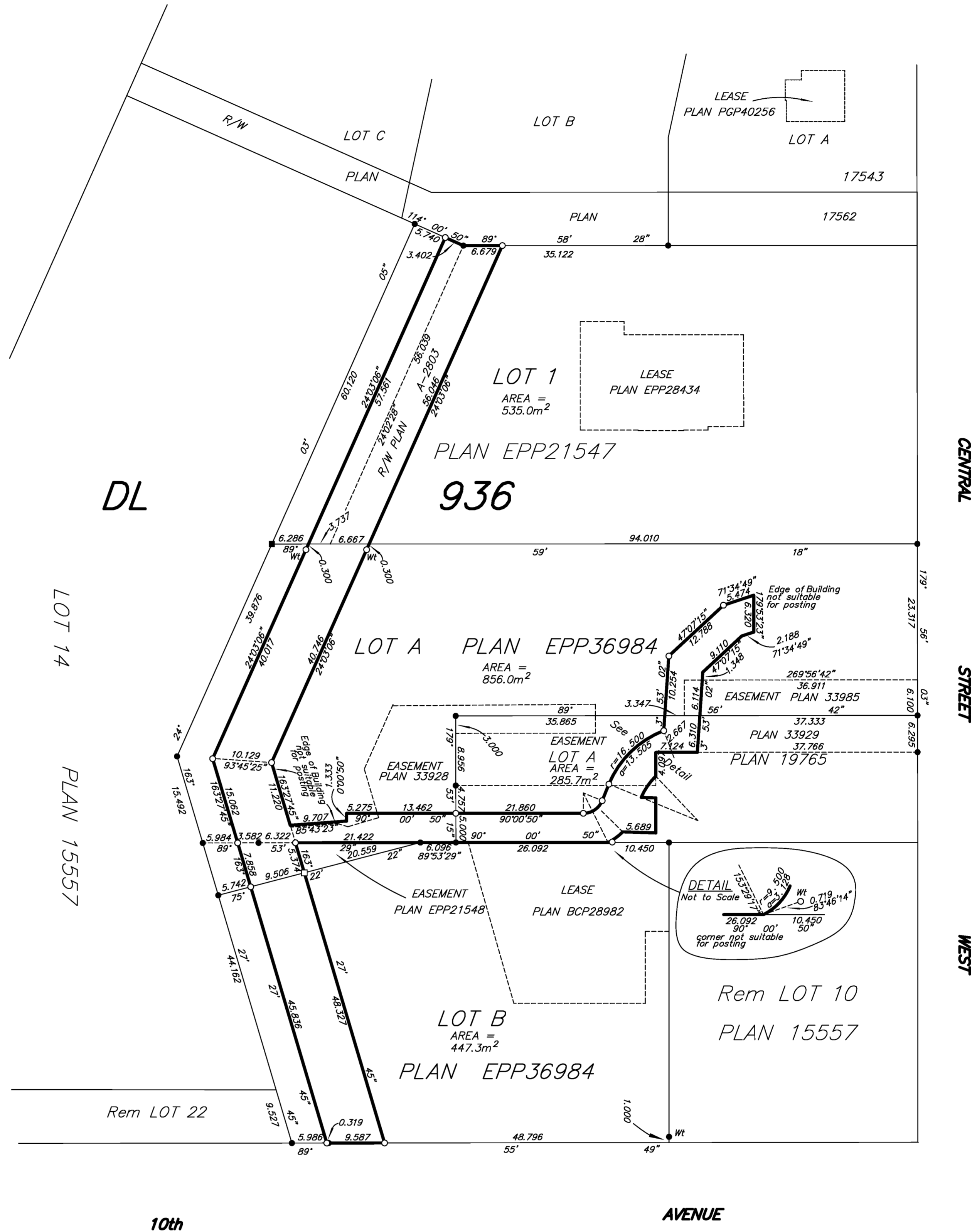
THIS PLAN SHOWS HORIZONTAL GROUND-LEVEL DISTANCES, UNLESS OTHERWISE SPECIFIED, TO COMPUTE GRID DISTANCES, MULTIPLY GROUND-LEVEL DISTANCES BY THE AVERAGE COMBINED FACTOR OF 0.9995105 WHICH HAS BEEN DERIVED FROM PREVIOUSLY INTEGRATED PLAN EPP21547.

LEGEND
GRID BEARINGS ARE DERIVED FROM PREVIOUSLY INTEGRATED PLAN EPP21547.

- LEAD PLUG FOUND
- LEAD PLUG PLACED
- STANDARD IRON POST FOUND
- STANDARD IRON POST PLACED

NOTE: THIS PLAN SHOWS ONE OR MORE WITNESS POSTS WHICH ARE NOT SET ON THE TRUE CORNER(S).

BOOK OF REFERENCE	
DESCRIPTION	AREA
Lot 1, Plan EPP21547	535.0m ²
Lot 2, Plan EPP36984	856.0m ²
Lot 3, Plan EPP36984	447.3m ²
Lot A, Plan 19765	285.7m ²



THE FIELD SURVEY REPRESENTED BY THIS PLAN WAS COMPLETED ON THE 12th DAY OF AUGUST, 2014. DALE KEOWN, BCLS 468

THIS PLAN LIES WITHIN THE REGIONAL DISTRICT OF FRASER - FORT GEORGE.

McElhanney
McElhanney Associates
Land Surveying Ltd.
Prince George, B.C.
E-mail: pgm@mcclhanney.com
Ph: (250) 561-2229 Fax: (250) 563-1941

DL - 936	File No. - 6202-RW
----------	--------------------