

REFERENCE PLAN OF CONSOLIDATION OF LOT 1, PLAN EPP44537 AND LANDS FORMERLY SHOWN ON STRATA PLAN PGS323, ALL IN DISTRICT LOT 1605, CARIBOO DISTRICT.

PLAN EPP44538

PURSUANT TO SECTION 100(1)(b) OF THE LAND TITLE ACT.
PURSUANT TO SECTION 274 OF THE STRATA PROPERTY ACT.

BCGS 93G.087

INTEGRATED SURVEY AREA No. 39, PRINCE GEORGE, NAD83 (CSRS) 4.0.0.BC.1

THE INTENDED PLOT SIZE OF THIS PLAN IS 432mm IN WIDTH BY
560mm IN HEIGHT (C SIZE) WHEN PLOTTED AT A SCALE OF 1:1250



ALL DISTANCES ARE HORIZONTAL GROUND-LEVEL AND ARE SHOWN
IN METRES AND DECIMALS THEREOF, UNLESS OTHERWISE INDICATED.

LEGEND

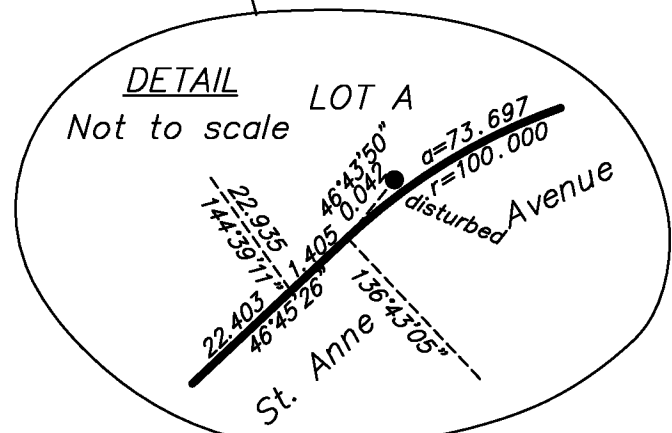
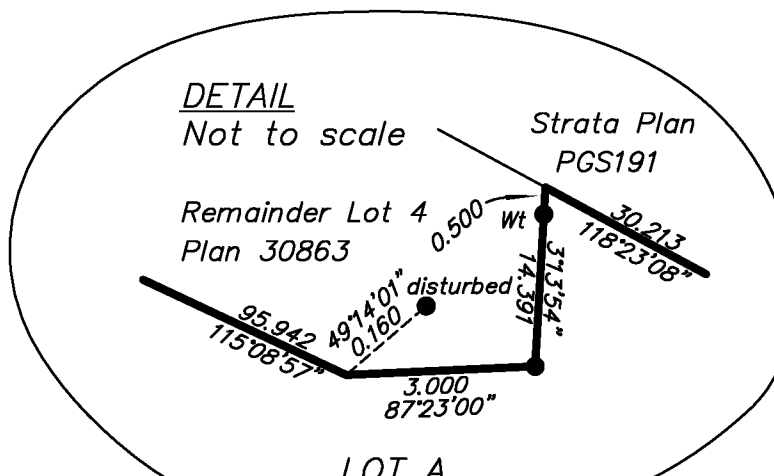
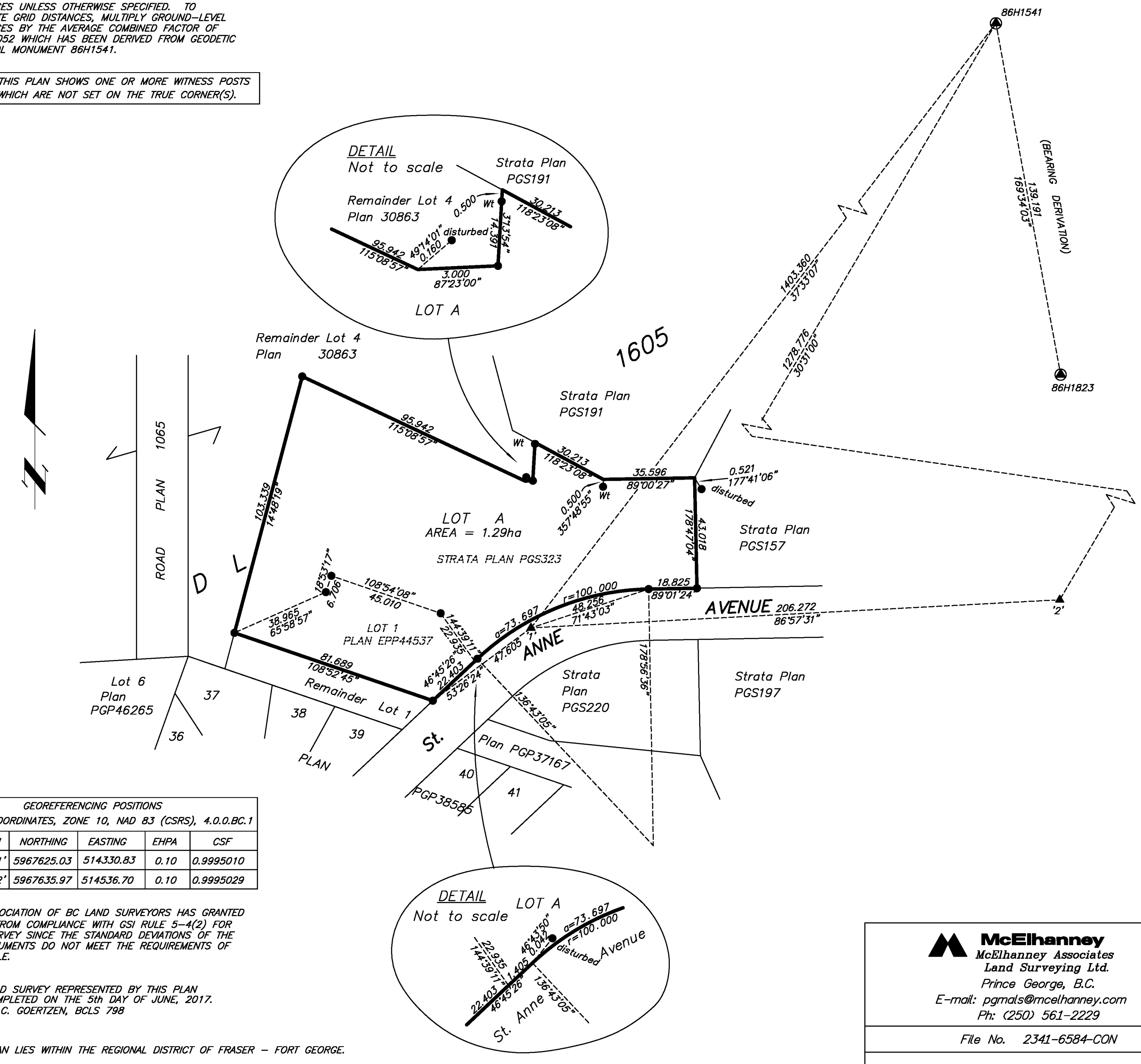
- STANDARD IRON POST FOUND
- ⊙ CONTROL MONUMENT FOUND
- ▲ TRAVERSE HUB FOUND
- EHPA ESTIMATED HORIZONTAL POSITIONAL ACCURACY
- CSF COMBINED SCALE FACTOR

GRID BEARINGS ARE DERIVED FROM OBSERVATIONS
BETWEEN GEODETIC CONTROL MONUMENTS 86H1541
AND 86H1823.

THE UTM COORDINATES AND ESTIMATED HORIZONTAL
POSITIONAL ACCURACY ACHIEVED HAVE BEEN DERIVED
FROM MASCOT PUBLISHED COORDINATES AND STANDARD
DEVIATIONS FOR GEODETIC CONTROL MONUMENTS
86H1541

THIS PLAN SHOWS HORIZONTAL GROUND-LEVEL
DISTANCES UNLESS OTHERWISE SPECIFIED. TO
COMPUTE GRID DISTANCES, MULTIPLY GROUND-LEVEL
DISTANCES BY THE AVERAGE COMBINED FACTOR OF
0.9995052 WHICH HAS BEEN DERIVED FROM GEODETIC
CONTROL MONUMENT 86H1541.

NOTE: THIS PLAN SHOWS ONE OR MORE WITNESS POSTS
WHICH ARE NOT SET ON THE TRUE CORNER(S).



GEOREFERENCING POSITIONS				
UTM COORDINATES, ZONE 10, NAD 83 (CSRS), 4.0.0.BC.1				
STATION	NORTHING	EASTING	EHPA	CSF
Fd.TH'1'	5967625.03	514330.83	0.10	0.9995010
Fd.TH'2'	5967635.97	514536.70	0.10	0.9995029

THE ASSOCIATION OF BC LAND SURVEYORS HAS GRANTED
RELIEF FROM COMPLIANCE WITH GSI RULE 5-4(2) FOR
THIS SURVEY SINCE THE STANDARD DEVIATIONS OF THE
ISA MONUMENTS DO NOT MEET THE REQUIREMENTS OF
SAID RULE.

THE FIELD SURVEY REPRESENTED BY THIS PLAN
WAS COMPLETED ON THE 5th DAY OF JUNE, 2017.
SHAUNA C. GOERTZEN, BCLS 798

THIS PLAN LIES WITHIN THE REGIONAL DISTRICT OF FRASER - FORT GEORGE.

McElhanney
McElhanney Associates
Land Surveying Ltd.
Prince George, B.C.
E-mail: pgmats@mcelhanney.com
Ph: (250) 561-2229

File No. 2341-6584-CON