

# REFERENCE PLAN OF LOT 2, DISTRICT LOT 1605, CARIBOO DISTRICT, PLAN PGP40131, EXCEPT PHASES 1, 2, 3, 4 AND 5 OF STRATA PLAN PGS323.

PLAN EPP44537

PURSUANT TO SECTION 235 OF THE STRATA PROPERTY ACT AND  
PURSUANT TO SECTION 100(1)(a) OF THE LAND TITLE ACT.

BCGS 93G.087

INTEGRATED SURVEY AREA No. 39, PRINCE GEORGE, NAD83 (CSRS) 4.0.0.BC.1

THE INTENDED PLOT SIZE OF THIS PLAN IS 432mm IN WIDTH BY  
560mm IN HEIGHT (C SIZE) WHEN PLOTTED AT A SCALE OF 1:1250



ALL DISTANCES ARE HORIZONTAL GROUND-LEVEL AND ARE SHOWN  
IN METRES AND DECIMALS THEREOF, UNLESS OTHERWISE INDICATED.

**LEGEND**

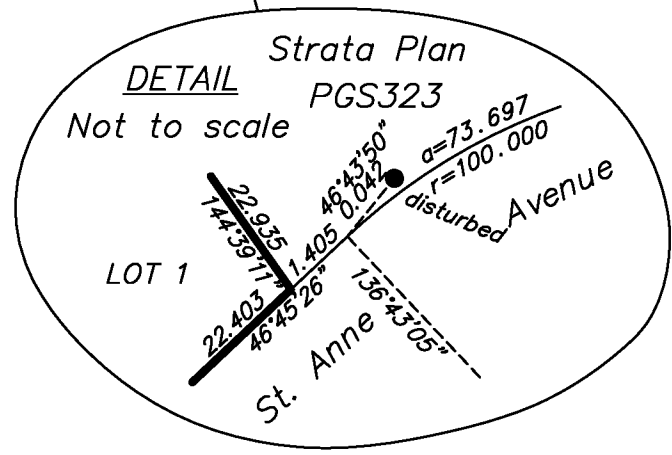
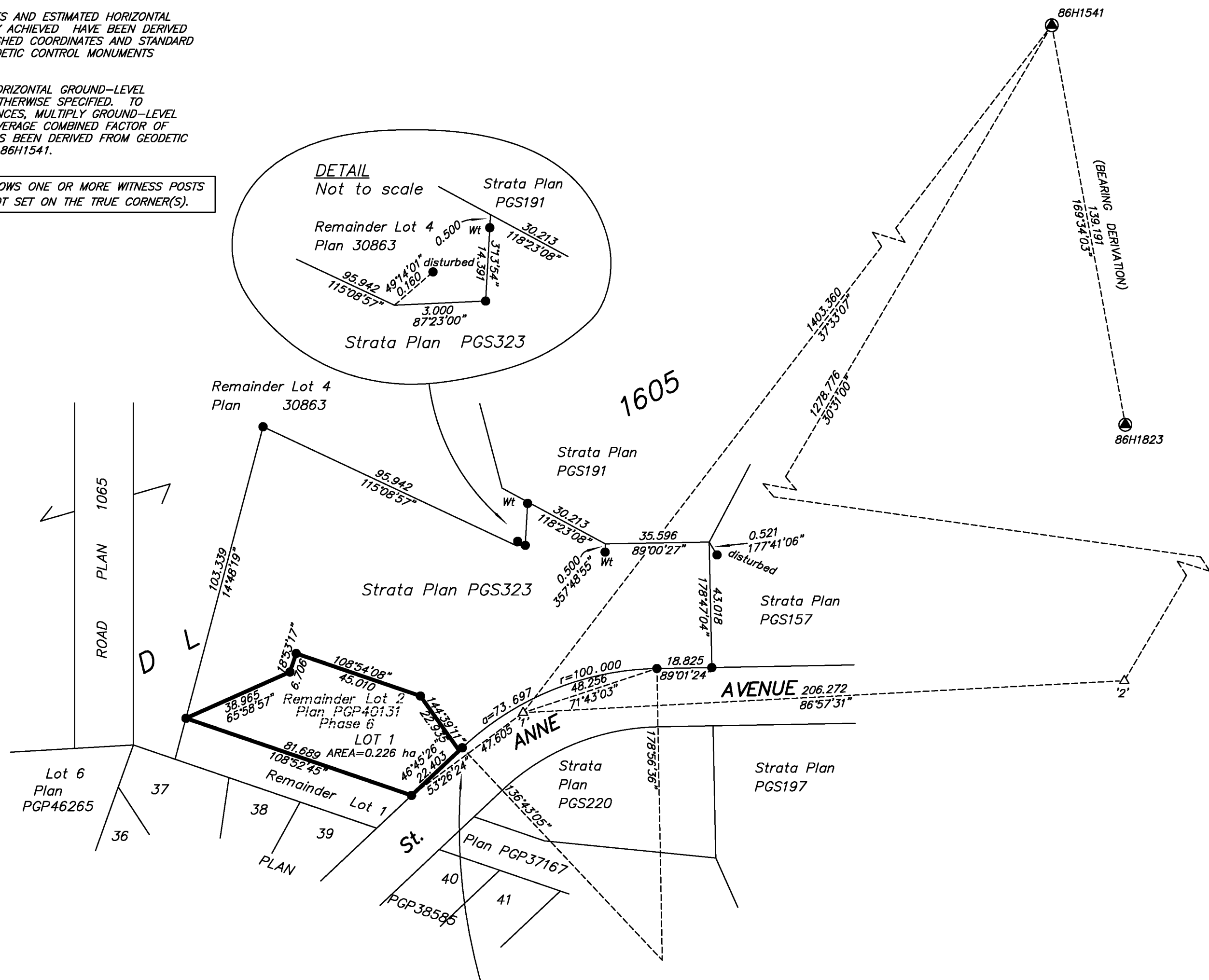
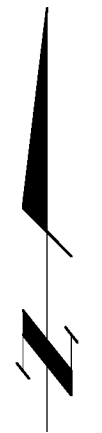
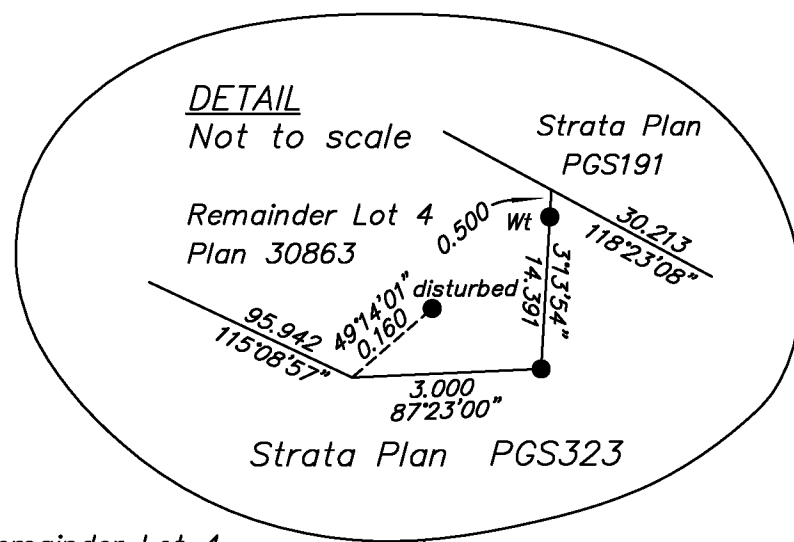
- STANDARD IRON POST FOUND
- ⊙ CONTROL MONUMENT FOUND
- △ TRAVERSE HUB PLACED
- EHPA ESTIMATED HORIZONTAL POSITIONAL ACCURACY
- CSF COMBINED SCALE FACTOR

GRID BEARINGS ARE DERIVED FROM OBSERVATIONS  
BETWEEN GEODETIC CONTROL MONUMENTS 86H1541  
AND 86H1823.

THE UTM COORDINATES AND ESTIMATED HORIZONTAL  
POSITIONAL ACCURACY ACHIEVED HAVE BEEN DERIVED  
FROM MASCOT PUBLISHED COORDINATES AND STANDARD  
DEVIATIONS FOR GEODETIC CONTROL MONUMENTS  
86H1541

THIS PLAN SHOWS HORIZONTAL GROUND-LEVEL  
DISTANCES UNLESS OTHERWISE SPECIFIED. TO  
COMPUTE GRID DISTANCES, MULTIPLY GROUND-LEVEL  
DISTANCES BY THE AVERAGE COMBINED FACTOR OF  
0.9995052 WHICH HAS BEEN DERIVED FROM GEODETIC  
CONTROL MONUMENT 86H1541.

NOTE: THIS PLAN SHOWS ONE OR MORE WITNESS POSTS  
WHICH ARE NOT SET ON THE TRUE CORNER(S).



GEOREFERENCING POSITIONS				
UTM COORDINATES, ZONE 10, NAD 83 (CSRS), 4.0.0.BC.1				
STATION	NORTHING	EASTING	EHPA	CSF
PI.TH'1'	5967625.03	514330.83	0.10	0.9995010
PI.TH'2'	5967635.97	514536.70	0.10	0.9995029

THE ASSOCIATION OF BC LAND SURVEYORS HAS GRANTED  
RELIEF FROM COMPLIANCE WITH GSI RULE 5-4(2) FOR  
THIS SURVEY SINCE THE STANDARD DEVIATIONS OF THE  
ISA MONUMENTS DO NOT MEET THE REQUIREMENTS OF  
SAID RULE.

THE FIELD SURVEY REPRESENTED BY THIS PLAN  
WAS COMPLETED ON THE 5th DAY OF JUNE, 2017.  
SHAUNA C. GOERTZEN, BCLS 798

THIS PLAN LIES WITHIN THE REGIONAL DISTRICT OF FRASER - FORT GEORGE.

**McElhanney**  
McElhanney Associates  
Land Surveying Ltd.  
Prince George, B.C.  
E-mail: pgmats@mcelhanney.com  
Ph: (250) 561-2229

---

File No. 2341-6584-REF