

**EXPLANATORY PLAN OF EASEMENT OVER
PART OF LOT 4, DISTRICT LOT 2100,
CARIBOO DISTRICT, PLAN PGP43819.**

PLAN EPP44332

PURSUANT TO SECTION 99(1)(e) OF THE LAND TITLE ACT.

BCGS 93G.096

INTEGRATED SURVEY AREA No. 39, PRINCE GEORGE, NAD83 (CSRS)

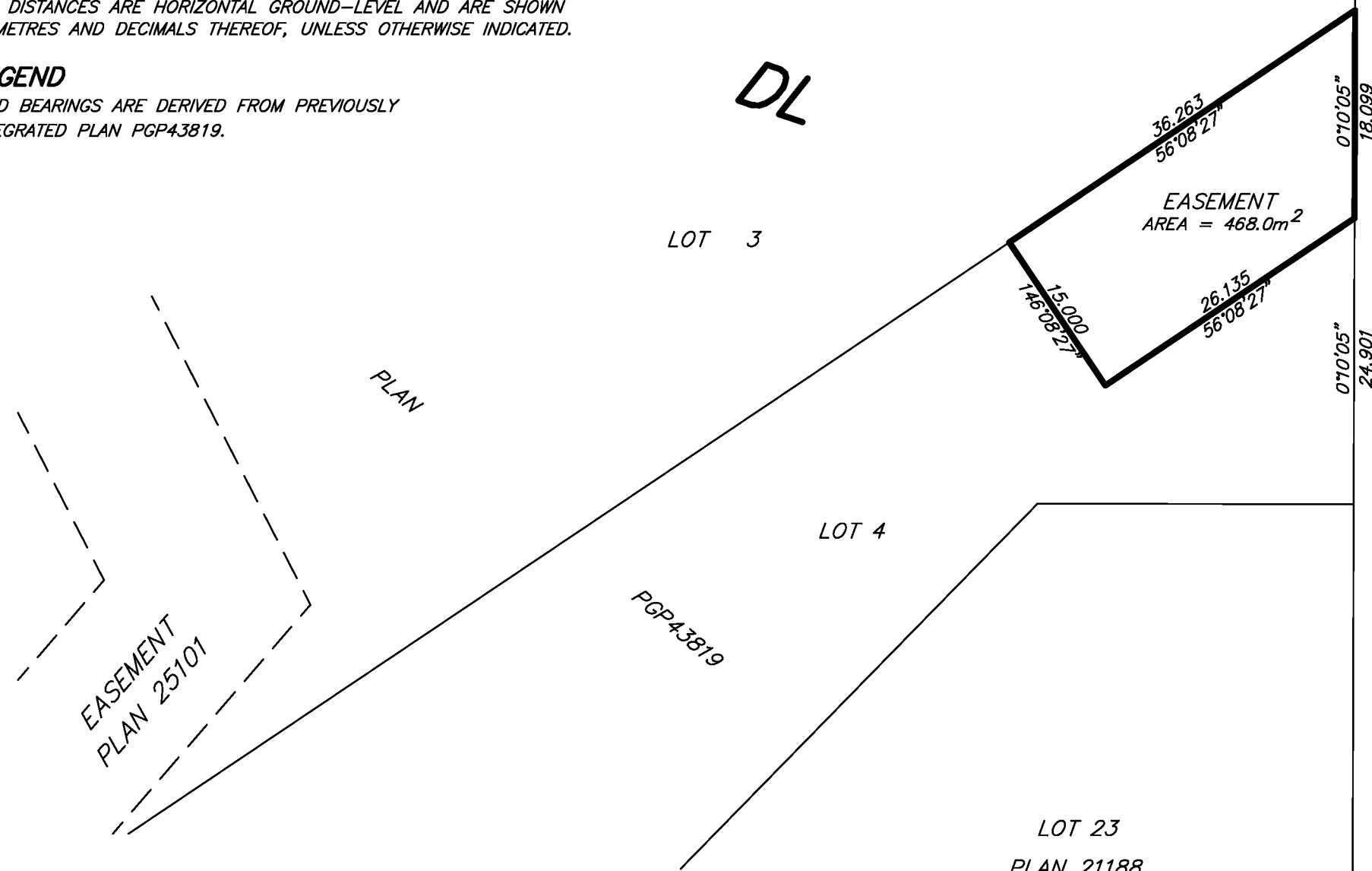
THE INTENDED PLOT SIZE OF THIS PLAN IS 432mm IN WIDTH BY
280mm IN HEIGHT (B SIZE) WHEN PLOTTED AT A SCALE OF 1:500



ALL DISTANCES ARE HORIZONTAL GROUND-LEVEL AND ARE SHOWN
IN METRES AND DECIMALS THEREOF, UNLESS OTHERWISE INDICATED.

LEGEND

GRID BEARINGS ARE DERIVED FROM PREVIOUSLY
INTEGRATED PLAN PGP43819.



2100

SW 1/4



THIS PLAN IS BASED ON THE FOLLOWING LAND TITLE
AND SURVEY AUTHORITY OF BC RECORDS: PLAN PGP43819
DALE KEOWN, BCLS 468
22nd DAY OF AUGUST, 2014

THIS PLAN LIES WITHIN THE REGIONAL DISTRICT OF FRASER - FORT GEORGE.

 McElhanney McElhanney Associates Land Surveying Ltd. Prince George, B.C. E-mail: pgmals@mcelhanney.com Ph: (250) 561-2229 Fax: (250) 563-1941	
DL- 2100	File No. - 6014-2102-B