

**REFERENCE PLAN OF EASEMENT WITHIN
PART OF DISTRICT LOT 1544, CARIBOO DISTRICT,
EXCEPT PLANS 8840, 9868, 14163, 15115,
16904 AND BCP6048.**

PLAN EPP44171

PURSUANT TO SECTION 99(1)(e) OF THE LAND TITLE ACT.

BCGS 93G.087

INTEGRATED SURVEY AREA No. 39, PRINCE GEORGE, NAD83 (CSRS)
THE INTENDED PLOT SIZE OF THIS PLAN IS 432mm IN WIDTH BY
560mm IN HEIGHT (C SIZE) WHEN PLOTTED AT A SCALE OF 1:1500

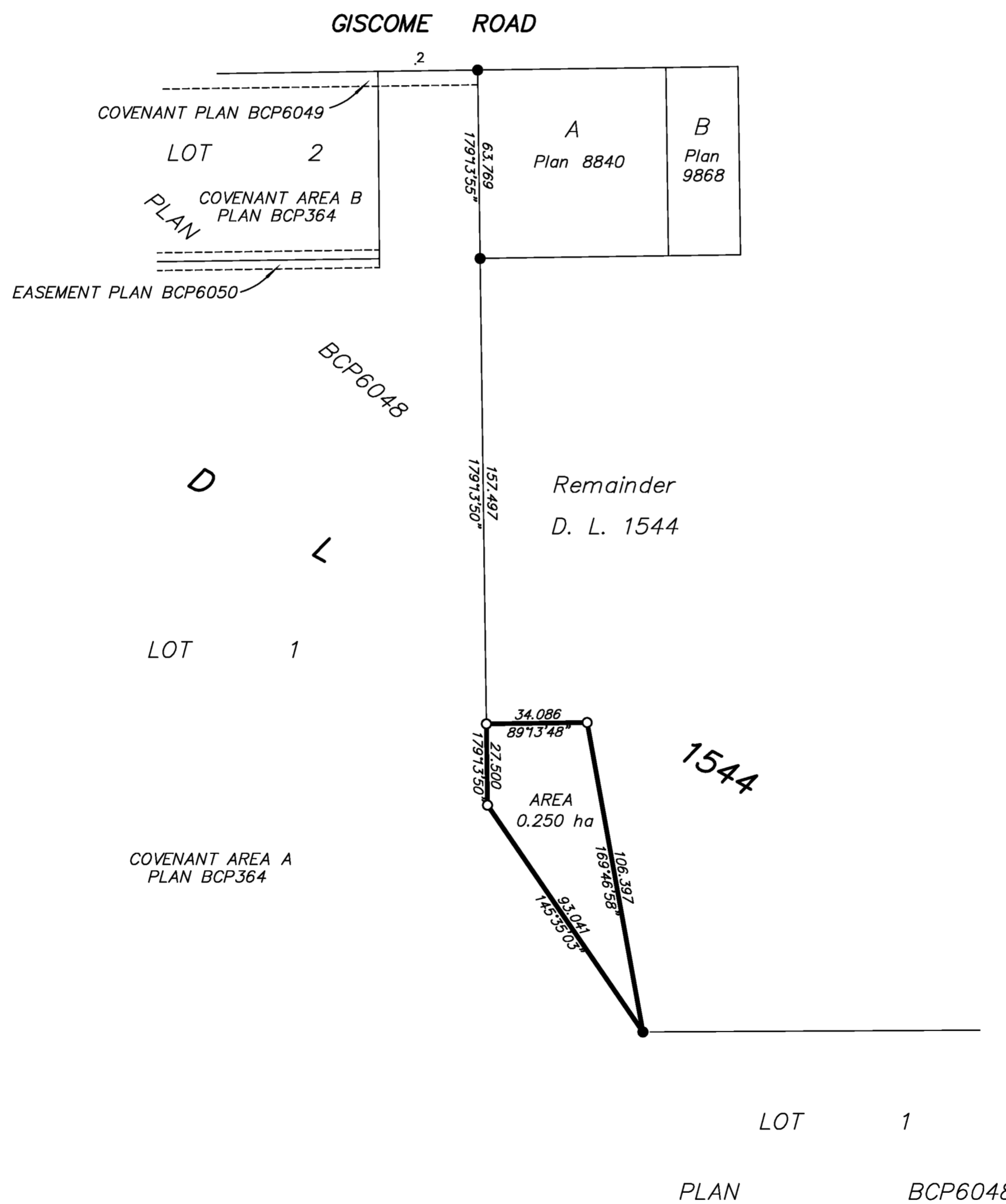


ALL DISTANCES ARE HORIZONTAL GROUND-LEVEL AND ARE SHOWN
IN METRES AND DECIMALS THEREOF, UNLESS OTHERWISE INDICATED.

LEGEND

GRID BEARINGS ARE DERIVED FROM PREVIOUSLY
INTEGRATED PLAN BCP6048.

- STANDARD IRON POST FOUND
- STANDARD IRON POST PLACED



THE FIELD SURVEY REPRESENTED BY THIS PLAN
WAS COMPLETED ON THE 19th DAY OF AUGUST, 2014.
DALE KEOWN, BCLS 468

THIS PLAN LIES WITHIN THE REGIONAL DISTRICT OF FRASER - FORT GEORGE.



McElhanney
McElhanney Associates
Land Surveying Ltd.
Prince George, B.C.

E-mail: pgmals@mcElhanney.com
Ph: (250) 561-2229 Fax: (250) 563-1941

DL-1544

File No. - 6254-E