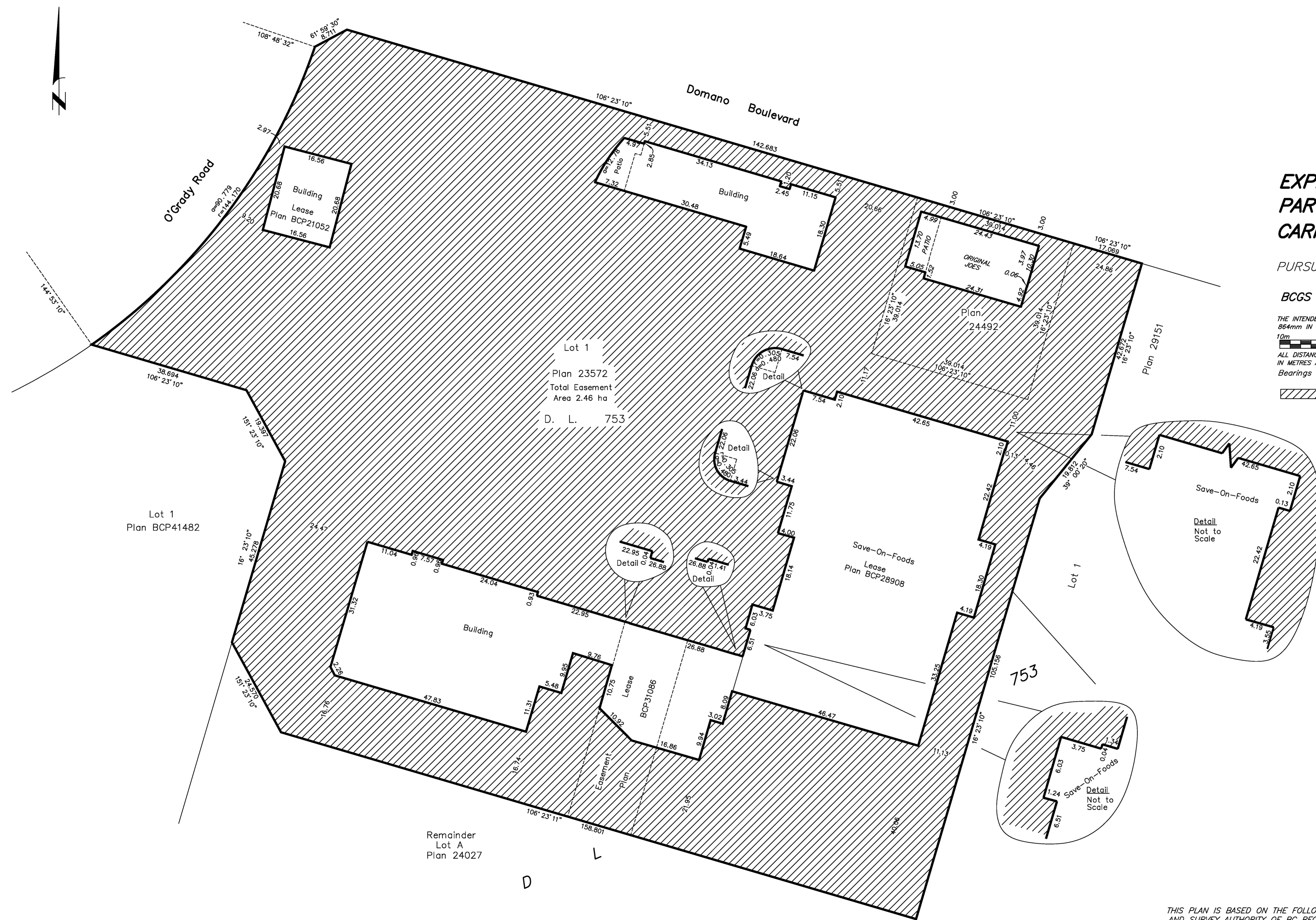


PLAN EPP44082



EXPLANATORY PLAN OF EASEMENT OVER PART OF LOT 1, DISTRICT LOT 753, CARIBOO DISTRICT, PLAN 23572.

PURSUANT TO SECTION 99(1)(e) OF THE LAND TITLE ACT.

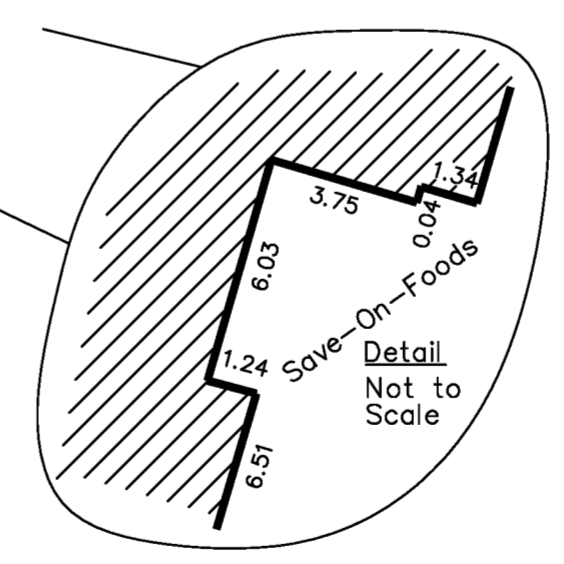
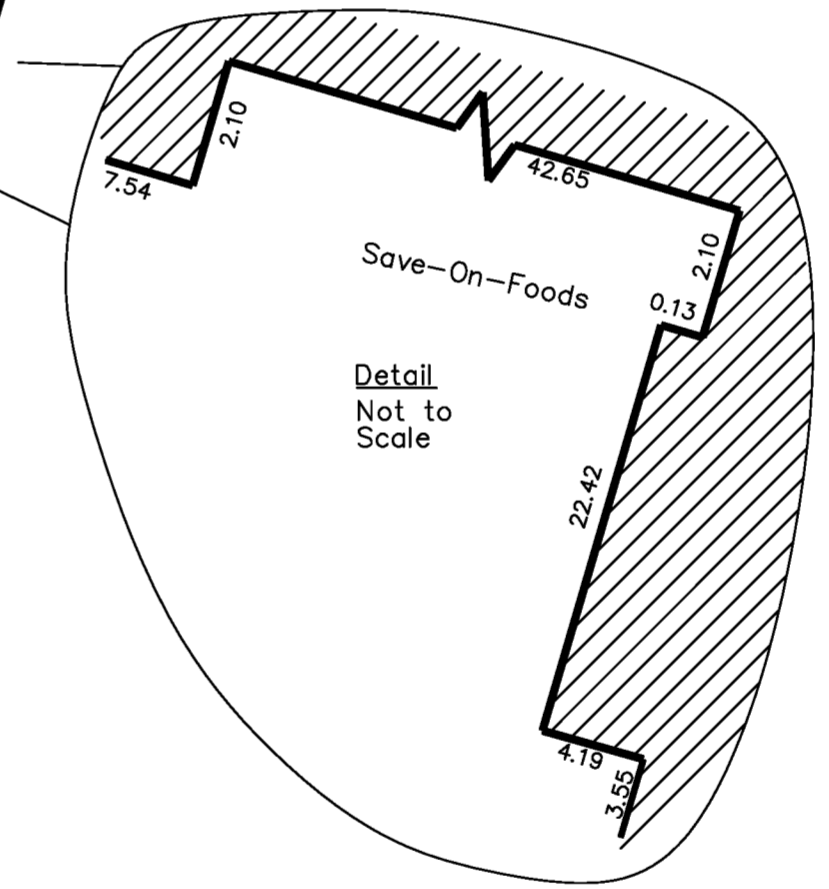
BCGS 93G.087

THE INTENDED PLOT SIZE OF THIS PLAN IS 560mm IN WIDTH BY 864mm IN HEIGHT (D SIZE) WHEN PLOTTED AT A SCALE OF 1:500

10m 0 10 20 30 40m

ALL DISTANCES ARE HORIZONTAL GROUND-LEVEL AND ARE SHOWN IN METRES AND DECIMALS THEREOF, UNLESS OTHERWISE INDICATED. Bearings are astronomic, derived from Plan 23572.

Easement Area



THIS PLAN IS BASED ON THE FOLLOWING LAND TITLE AND SURVEY AUTHORITY OF BC RECORDS: PLAN 23572
DALE KEOWN, BCLS 468
15th DAY OF AUGUST, 2014

McElhanney
McElhanney Associates
Land Surveying Ltd.
Prince George, B.C.
E-mail: pgmals@mcElhanney.com
Ph: (250) 561-2229 Fax: (250) 563-1941

DL- 753 File No. - 6014-2096-E

THIS PLAN LIES WITHIN THE REGIONAL DISTRICT OF FRASER - FORT GEORGE.