

REFERENCE PLAN TO ACCOMPANY BYLAW NO. 8639, CITY OF PRINCE GEORGE, TO CLOSE PART DEDICATED ROAD ON PLAN H881, DISTRICT LOT 2166, CARIBOO DISTRICT.

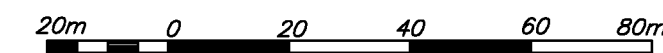
PLAN EPP43657

PURSUANT TO SECTION 120 OF THE LAND TITLE ACT AND SECTION 40 OF THE COMMUNITY CHARTER.

BCGS 93G.087

INTEGRATED SURVEY AREA No. 39, PRINCE GEORGE, NAD83 (CSRS)

THE INTENDED PLOT SIZE OF THIS PLAN IS 560mm IN WIDTH BY 432mm IN HEIGHT (C SIZE) WHEN PLOTTED AT A SCALE OF 1:1250



ALL DISTANCES ARE HORIZONTAL GROUND-LEVEL AND ARE SHOWN IN METRES AND DECIMALS THEREOF, UNLESS OTHERWISE INDICATED.

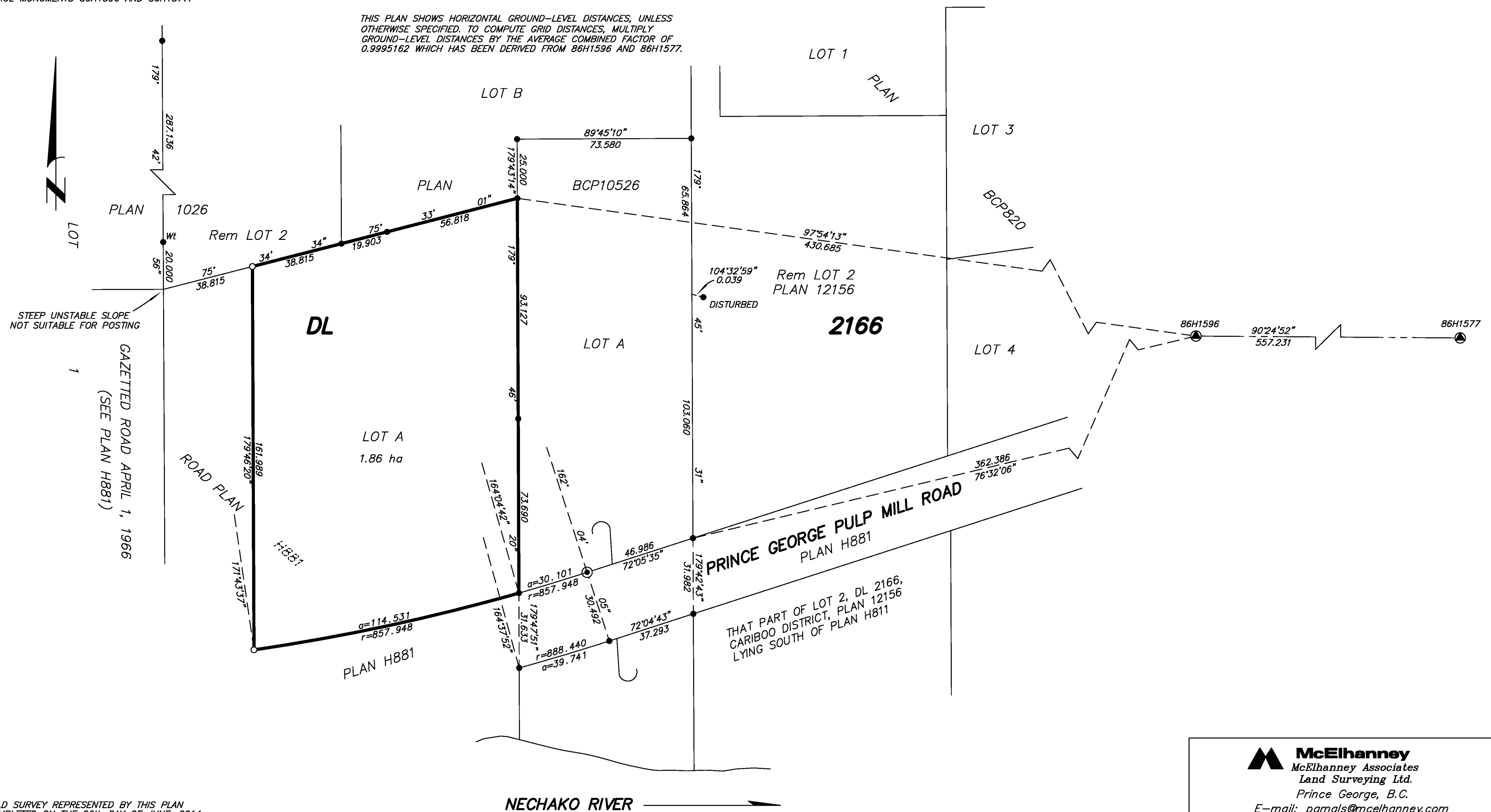
GRID BEARINGS ARE DERIVED FROM OBSERVATIONS BETWEEN CONTROL MONUMENTS 86H1596 AND 86H1577.

LEGEND

- ⊙ CONTROL MONUMENT FOUND
- ⦿ STANDARD CONCRETE POST FOUND
- STANDARD IRON POST FOUND
- STANDARD IRON POST PLACED

NOTE: THIS PLAN SHOWS ONE OR MORE WITNESS POSTS WHICH ARE NOT SET ON THE TRUE CORNER(S).

THIS PLAN SHOWS HORIZONTAL GROUND-LEVEL DISTANCES, UNLESS OTHERWISE SPECIFIED. TO COMPUTE GRID DISTANCES, MULTIPLY GROUND-LEVEL DISTANCES BY THE AVERAGE COMBINED FACTOR OF 0.9995162 WHICH HAS BEEN DERIVED FROM 86H1596 AND 86H1577.



THE FIELD SURVEY REPRESENTED BY THIS PLAN WAS COMPLETED ON THE 26th DAY OF JUNE, 2014. DALE KEOWN, BCLS 468

THIS PLAN LIES WITHIN THE REGIONAL DISTRICT OF FRASER - FORT GEORGE.

McElhanney
McElhanney Associates
Land Surveying Ltd.
Prince George, B.C.

E-mail: pgmalls@mcelhanney.com
Ph: (250) 561-2229 Fax: (250) 563-1941

DL - 2166

File No. - 6207-BL