

REFERENCE PLAN OF ROAD DEDICATION THROUGH PART OF LOT B, DISTRICT LOT 8180, CARIBOO DISTRICT, PLAN BCP25328.

PLAN EPP43542

PURSUANT TO SECTION 107 OF THE LAND TITLE ACT.

BCGS 93G.087

INTEGRATED SURVEY AREA No. 39, PRINCE GEORGE, NAD83(CSRS) 4.0.0.BC.1

THE INTENDED PLOT SIZE OF THIS PLAN IS 432mm IN WIDTH BY 560mm IN HEIGHT (C SIZE) WHEN PLOTTED AT A SCALE OF 1:1250



ALL DISTANCES ARE HORIZONTAL GROUND-LEVEL AND ARE SHOWN IN METRES AND DECIMALS THEREOF, UNLESS OTHERWISE INDICATED.

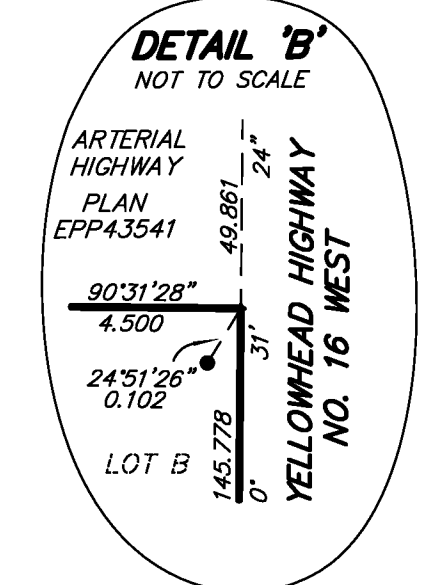
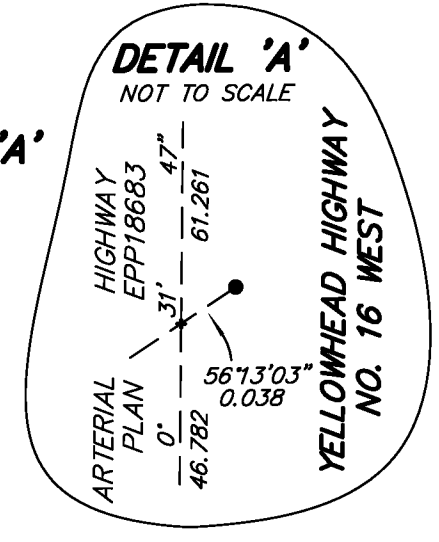
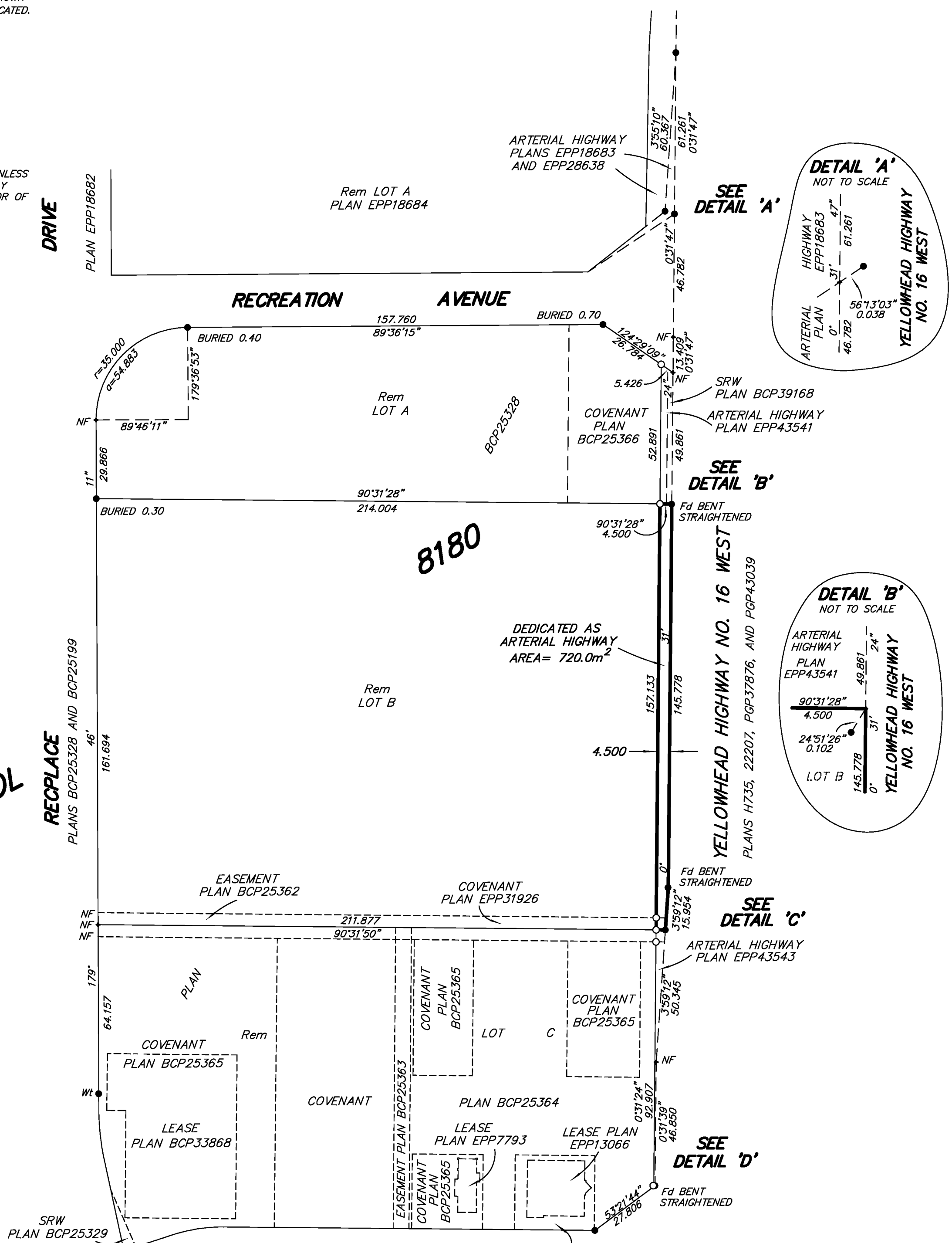
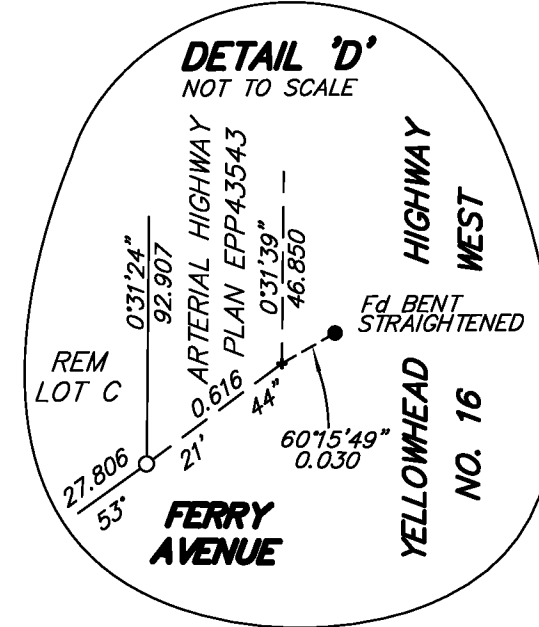
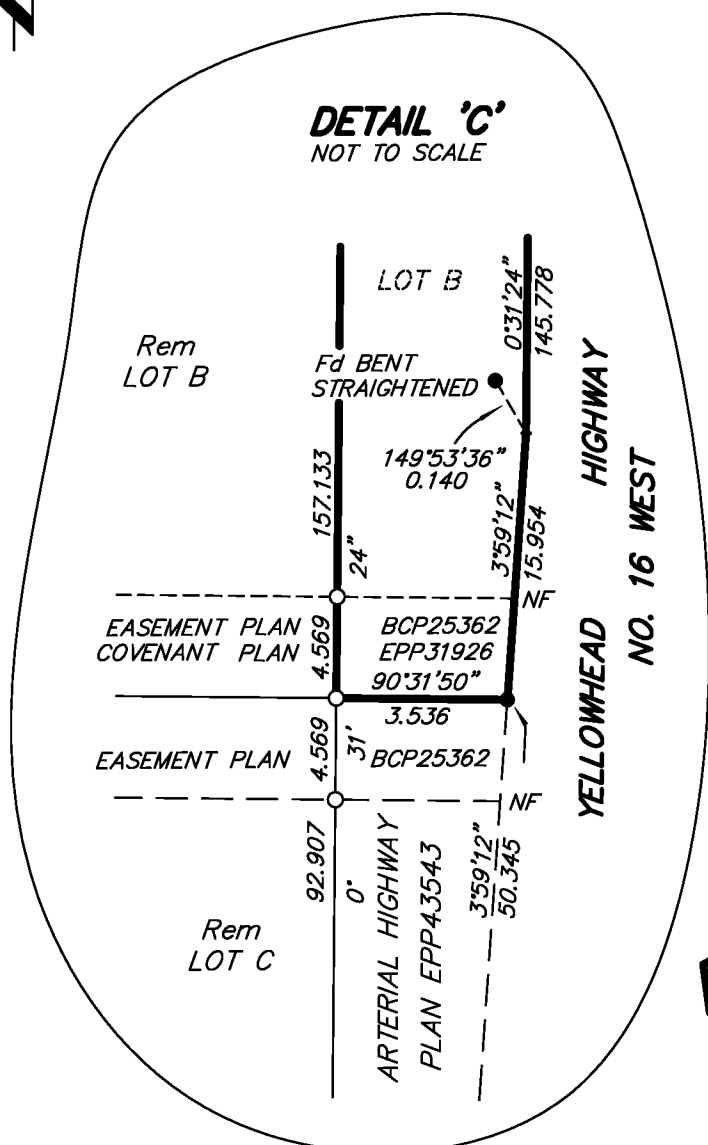
LEGEND

GRID BEARINGS ARE DERIVED FROM PREVIOUSLY INTEGRATED PLAN BCP25328

- DENOTES STANDARD IRON POST FOUND
- DENOTES STANDARD IRON POST PLACED
- + DENOTES UNMARKED MEASURED POINT

NOTE: THIS PLAN SHOWS ONE OR MORE WITNESS POSTS WHICH ARE NOT SET ON THE TRUE CORNER(S).

THIS PLAN SHOWS HORIZONTAL GROUND-LEVEL DISTANCES, UNLESS OTHERWISE SPECIFIED. TO COMPUTE GRID DISTANCES, MULTIPLY GROUND-LEVEL DISTANCES BY THE AVERAGE COMBINED FACTOR OF 0.9995125 WHICH HAS BEEN DERIVED FROM PLAN BCP25328.



THIS PLAN DEDICATES ARTERIAL HIGHWAY AS AUTHORIZED BY THE MINISTER OF TRANSPORTATION AND INFRASTRUCTURE.
 THIS PLAN LIES WITHIN THE JURISDICTION OF THE APPROVING OFFICER FOR THE CITY OF PRINCE GEORGE.
 THE FIELD SURVEY REPRESENTED BY THIS PLAN WAS COMPLETED ON THE 18th DAY OF JULY, 2014.
 DARREN KENT, BCLS 904

THIS PLAN LIES WITHIN THE REGIONAL DISTRICT OF FRASER - FORT GEORGE.

McElhanney
 McElhanney Associates
 Land Surveying Ltd.
 Prince George, B.C.
 E-mail: pgmals@mcelhanney.com
 Ph: (250) 561-2229 Fax: (250) 563-1941

DL - 8180	File No. - 6238-RD-B
MOTI File No. 730054	