

**REFERENCE PLAN OF CONSOLIDATION OF LOTS 11,
12 AND 13 EXCEPT PLAN 14394, BLOCK 164,
DISTRICT LOT 343, CARIBOO DISTRICT, PLAN 1268
AND LOT A, DISTRICT LOT 343,
CARIBOO DISTRICT, PLAN 14394.**

PLAN EPP43366

PURSUANT TO SECTION 100(1)(b) OF THE LAND TITLE ACT.

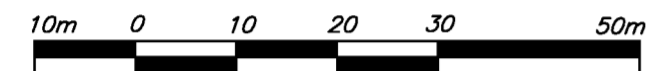
BCGS 93G.097

INTEGRATED SURVEY AREA No. 39, PRINCE GEORGE, NAD83 (CSRS)

GRID BEARINGS ARE DERIVED FROM OBSERVATIONS BETWEEN
GEODETIC CONTROL MONUMENTS 85H1341 AND 85H1090.

THIS PLAN SHOWS HORIZONTAL GROUND-LEVEL DISTANCES, UNLESS
OTHERWISE SPECIFIED. TO COMPUTE GRID DISTANCES, MULTIPLY
GROUND-LEVEL DISTANCES BY THE AVERAGE COMBINED FACTOR OF
0.9995163 WHICH HAS BEEN DERIVED FROM 85H1341 AND 85H1090.

THE INTENDED PLOT SIZE OF THIS PLAN IS 560mm IN WIDTH BY
432mm IN HEIGHT (C SIZE) WHEN PLOTTED AT A SCALE OF 1:750

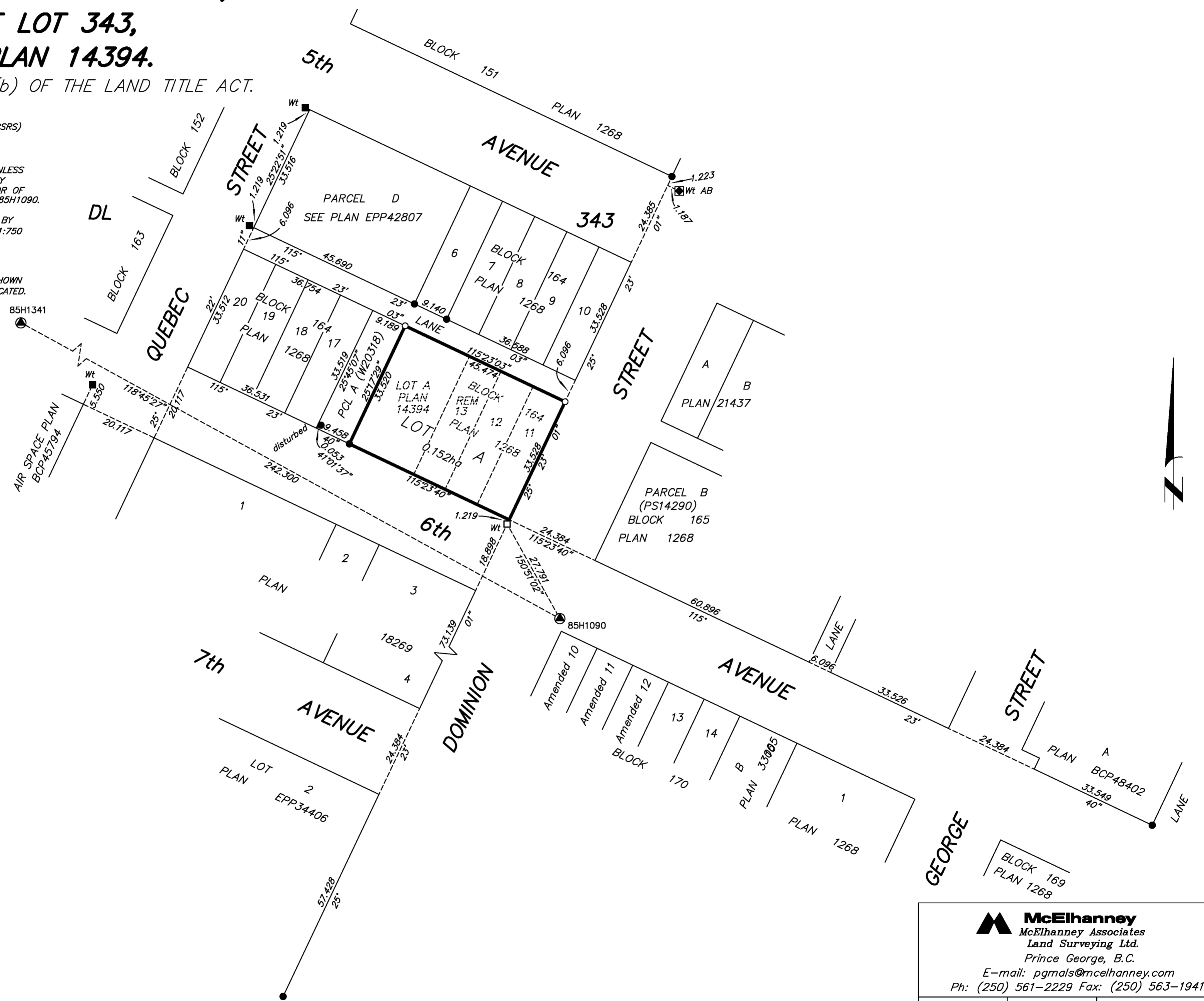


ALL DISTANCES ARE HORIZONTAL GROUND-LEVEL AND ARE SHOWN
IN METRES AND DECIMALS THEREOF, UNLESS OTHERWISE INDICATED.

LEGEND

- LEAD PLUG FOUND
- LEAD PLUG PLACED
- STANDARD IRON POST FOUND
- STANDARD IRON POST PLACED
- ⊙ CONTROL MONUMENT FOUND
- ⊠ ALUMINUM BOLT FOUND

NOTE: THIS PLAN SHOWS ONE OR MORE WITNESS POSTS
WHICH ARE NOT SET ON THE TRUE CORNER(S).



THE FIELD SURVEY REPRESENTED BY THIS PLAN
WAS COMPLETED ON THE 21st DAY OF JULY, 2014.
DALE KEOWN, BCLS 468

THIS PLAN LIES WITHIN THE REGIONAL DISTRICT OF FRASER - FORT GEORGE.

McElhanney
McElhanney Associates
Land Surveying Ltd.
Prince George, B.C.
E-mail: pgmals@mcelhanney.com
Ph: (250) 561-2229 Fax: (250) 563-1941

DL- 343	BLK 164	File No. - 6237-CON
---------	---------	---------------------