

# REFERENCE PLAN OF EASEMENT WITHIN NORTH 1/2 DISTRICT LOT 10232, CARIBOO DISTRICT.

PLAN EPP43347

PURSUANT TO SECTION 99(1)(e) OF THE LAND TITLE ACT.

BCGS 93G.096

THE INTENDED PLOT SIZE OF THIS PLAN IS 432mm IN WIDTH BY 560mm IN HEIGHT (C SIZE) WHEN PLOTTED AT A SCALE OF 1:500



ALL DISTANCES ARE HORIZONTAL GROUND-LEVEL AND ARE SHOWN IN METRES AND DECIMALS THEREOF, UNLESS OTHERWISE INDICATED.

**LEGEND**

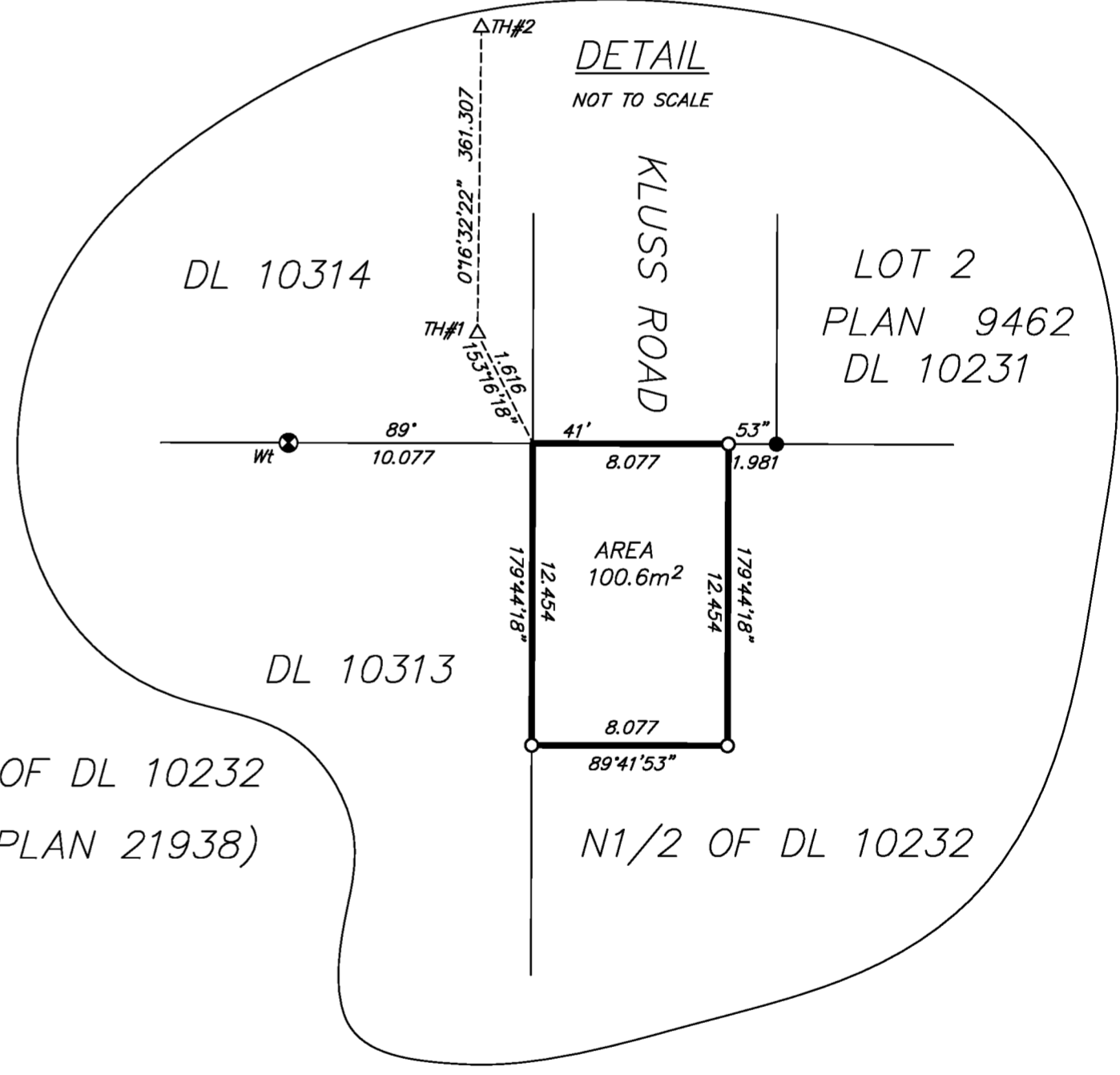
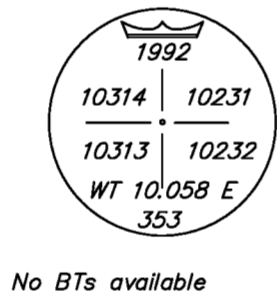
- ⊙ STANDARD CAPPED POST FOUND
- STANDARD IRON POST FOUND
- STANDARD IRON POST PLACED
- △ TRAVERSE HUB PLACED

THIS PLAN SHOWS HORIZONTAL GROUND-LEVEL DISTANCES UNLESS OTHERWISE SPECIFIED. TO COMPUTE GRID DISTANCES, MULTIPLY GROUND-LEVEL DISTANCES BY THE AVERAGE COMBINED FACTOR OF 0.99947959. THE AVERAGE COMBINED FACTOR HAS BEEN DETERMINED BASED ON AN ELLIPSOIDAL ELEVATION OF 776.9 METRES.

GRID BEARINGS ARE DERIVED FROM DIFFERENTIAL CARRIER PHASE GPS OBSERVATIONS AND ARE REFERRED TO THE CENTRAL MERIDIAN OF UTM ZONE 10. TO OBTAIN LOCAL ASTRONOMIC BEARINGS REFERRED TO THE MERIDIAN THROUGH TH#2, ADD 0°07'34".

TH#2  
 DATUM.....NAD83(CSRS), UTM ZONE 10  
 UTM NORTHING.....5974344.502  
 UTM EASTING.....510258.758  
 COMBINED SCALE FACTOR 0.99947959  
 ESTIMATED HORIZONTAL ACCURACY IS 0.10 METRES.

TH#1  
 DATUM.....NAD83(CSRS), UTM ZONE 10  
 UTM NORTHING.....5973983.387  
 UTM EASTING.....510257.039  
 COMBINED SCALE FACTOR 0.99948011  
 ESTIMATED HORIZONTAL ACCURACY IS 0.10 METRES.



**McElhanney**  
 McElhanney Associates  
 Land Surveying Ltd.  
 Prince George, B.C.  
 E-mail: pgmals@mcelhanney.com  
 Ph: (250) 561-2229 Fax: (250) 563-1941

DL- 10232	File No. - 6239-E
-----------	-------------------

THE FIELD SURVEY REPRESENTED BY THIS PLAN WAS COMPLETED ON THE 21st DAY OF JULY, 2014.  
 DALE KEOWN, BCLS 468

THIS PLAN LIES WITHIN THE REGIONAL DISTRICT OF FRASER - FORT GEORGE.