

**STATUTORY RIGHT OF WAY PLAN
OVER A PORTION OF DISTRICT LOT
2611 CARIBOO DISTRICT, EXCEPT
PLANS: B3004 B3543 B3823 1437
21360 PGP39723 AND PGP41693
PURSUANT TO SECTION 113 OF THE LAND TITLE ACT**
BCGS 93G.086

PLAN EPP42912



The intended plot size of this plan is 864mm in width by 560mm in height (D size) when plotted at a scale of 1:1500.

Integrated Survey Area No. 39, City of Prince George, NAD83 (CSRS) 4.0.0.BC.1.

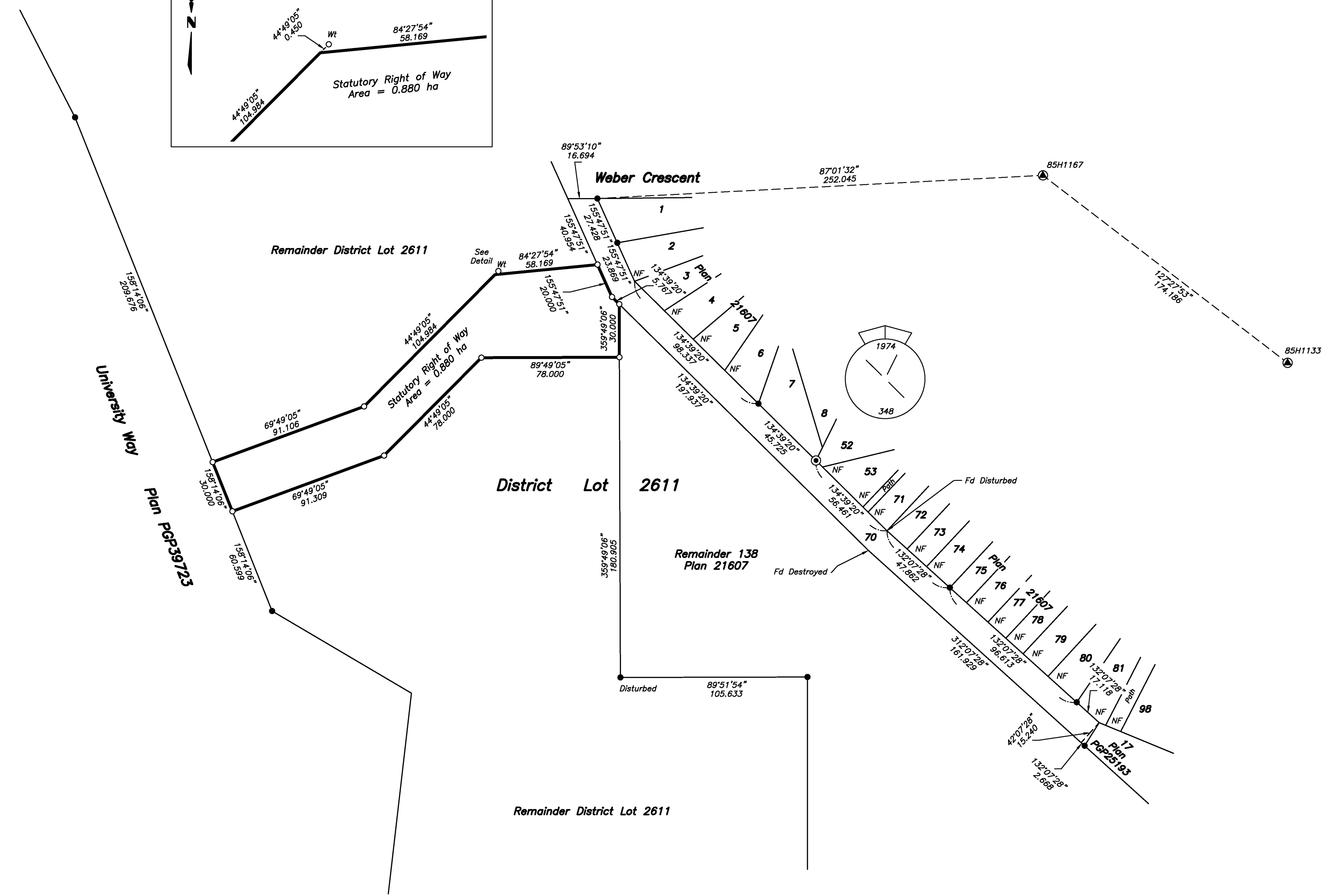
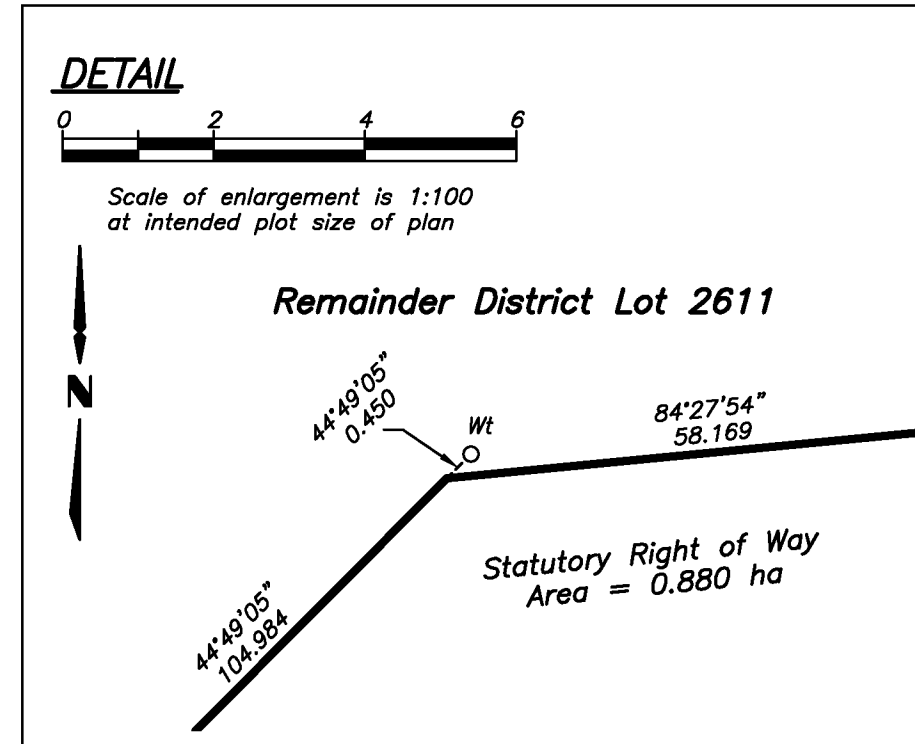
Grid bearings are derived from observations between geodetic control monuments 85H1167 and 85H1133.

This plan shows horizontal ground-level distances unless otherwise specified. To compute grid distances, multiply ground-level distances by the average combined factor of 0.9995099, which has been derived from geodetic control monument 85H1167 (GCM #4812)

This plan shows one or more witness posts which are not set on the true corner(s).

LEGEND

- ⊕ denotes control monument found
- ⊙ denotes standard concrete post found
- denotes standard iron post found
- denotes standard iron post placed



This plan is prepared as the Official Plan of the lands shown hereon for the Surveyor General.

This plan lies within the Regional District of Fraser-Fort George

The field survey represented by this plan was completed on the 16th day of June, 2014.
Brian Sansom, BCLS 739

FOCUS
Focus Surveys (BC) Limited Partnership
186 Health Center Rd, Box 1070 Vanderhoof, BC
PROJECT REF./DRAWING No.
010049348-RWSU01-R00